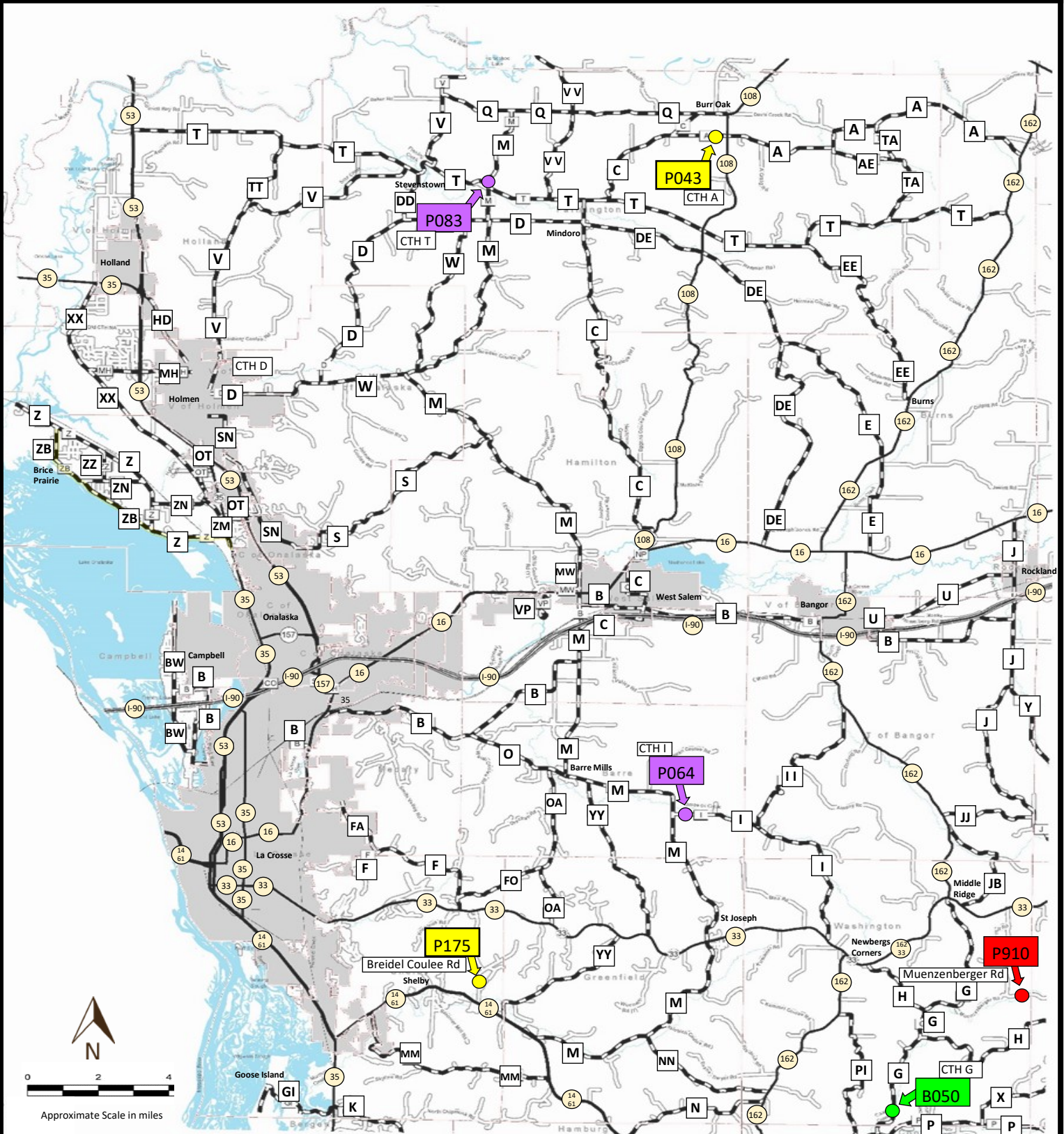


La Crosse County Highway Department: Load Posted Bridge Map 2024



LA CROSSE COUNTY

Base Map: Highway Map of La Crosse County
 1946 Modifications: September 25, 2024 CAWS
 Filename: County HWY Load Posted Bridge Map 2024

- B050 **Bridge Number**
- S **County HWY Letter**
- 16 **State HWY Number**

* Jan 30, 2023 CTH B from CTH M to CTH C was transferred to West Salem

Bridge Load Postings

- 15 Tons
- 20 Tons
- 30 Tons
- 35 Tons
- 45 Tons

Bridge	On	Under	Load Posting	Custodian	Built	H.S.I.
1	B050	G	Coon Creek	30	County	1939
2	P064	I	Br Bostwick Creek	45	County	1973
3	P083	T	Fleming Creek	45	County	1976
4	P175	Breidel Coulee Rd (Dead End)	BR Mormon Creek	20	Town	1961 40
5	P910	Muenzenberger Rd	Coon Creek	15	Town	1947
6	P043	A	Burr Oak Creek	20	County	1957