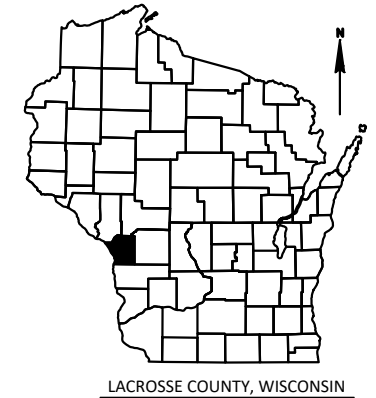


# PLAN OF PROPOSED IMPROVEMENT FOR COUNTY HIGHWAY 'NN'

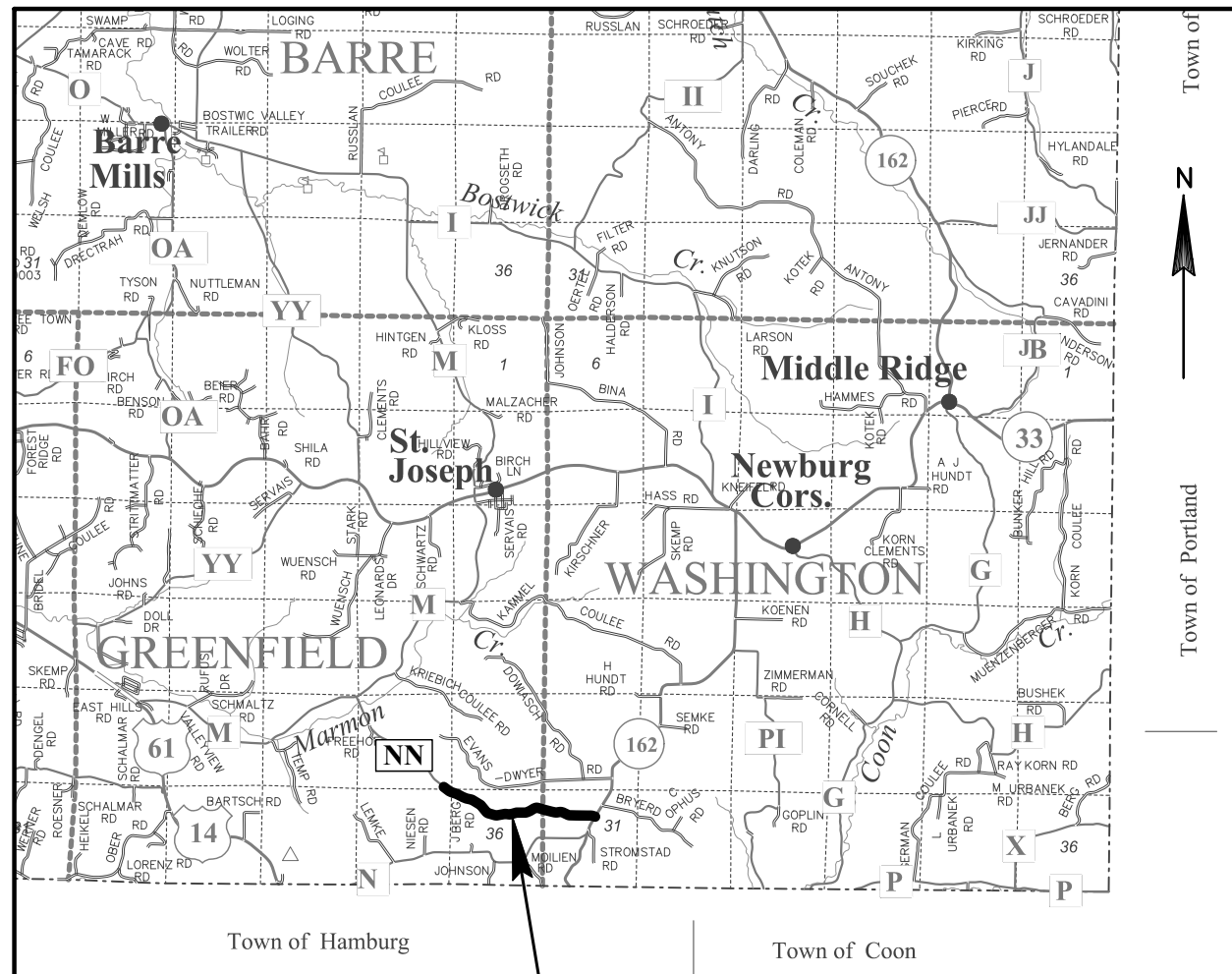
From **Betz Road** to **State Highway 162**

IN THE  
**Town of Greenfield & Town of Washington**  
**LaCrosse County, Wisconsin**

INDEX OF SHEETS	
SHEET NO.	DESCRIPTION
1	TITLE SHEET
2	GENERAL NOTES
03-04	PROJECT OVERVIEW TYPICAL SECTIONS INTERSECTION DETAILS PLAN DETAILS EROSION CONTROL STORM SEWER DETAILS PERMANENT SIGNING & PAVEMENT MARKING
05	DETOUR TRAFFIC CONTROL
06 - 07	ALIGNMENT DETAILS
08	MISCELLANEOUS QUANTITIES
09-24	PLAN & PROFILE
25-124	CROSS SECTIONS



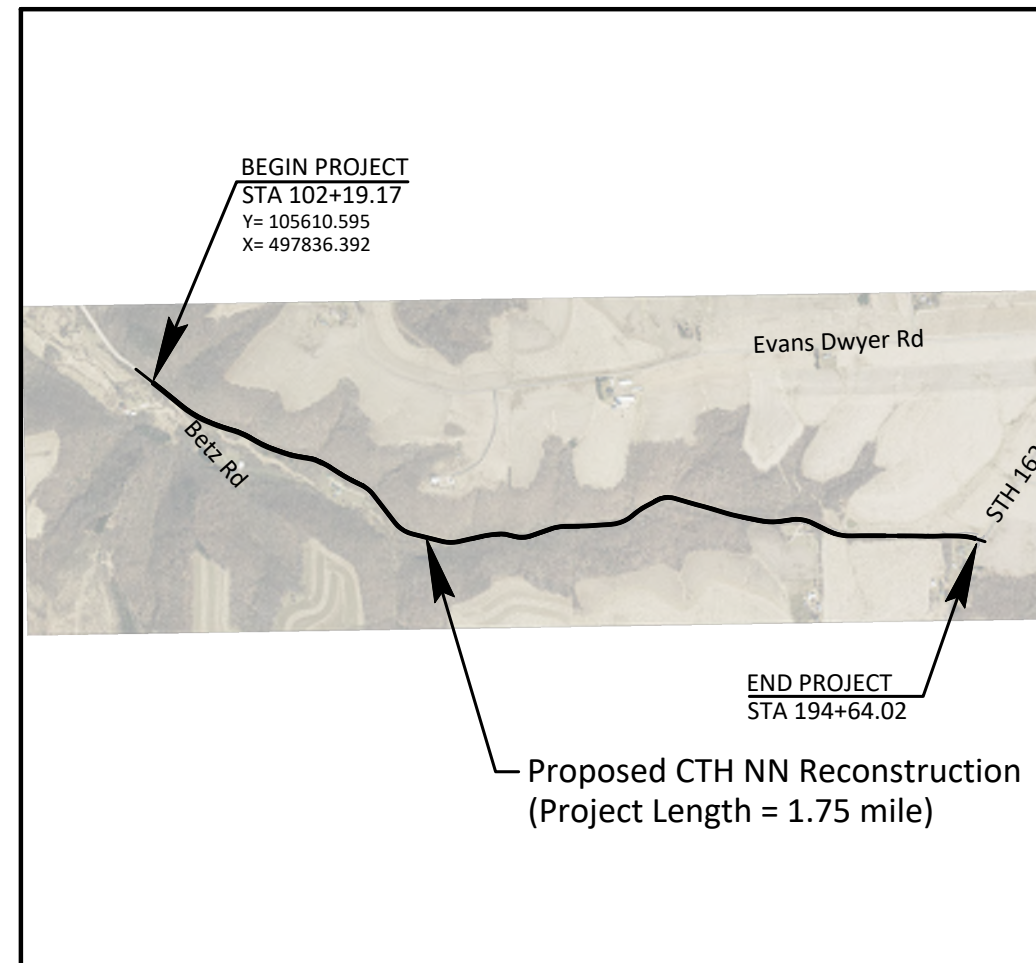
**VICINITY MAP**  
(South East LaCrosse Co.)



**PROJECT LOCATION**

LAYOUT  
SCALE 0 1 MI. 2 MI.

**SITE MAP**



HORIZONTAL POSITIONS SHOWN ON THIS PLAN ARE WISCONSIN COORDINATE REFERENCE SYSTEM (WISCRS), LACROSSE COUNTY, NAD83 (2011), IN U.S. SURVEY FEET. POSITIONS SHOWN ARE GRID COORDINATES, GRID BEARINGS, AND GRID DISTANCES. GRID DISTANCES ARE THE SAME AS GROUND DISTANCES. ELEVATIONS ARE REFERENCED TO NAVD 88 (2012). GPS DERIVED ELEVATIONS ARE BASED ON GEOID 12A.

**PRELIMINARY  
NOT FOR BIDDING OR  
CONSTRUCTION**

Original Plans Prepared by

Short Elliott Hendrickson Inc.  
329 Jay Street, Suite 301  
La Crosse, WI 54601-4034  
608.782.3161 main  
www.sehinc.com

(Signature) \_\_\_\_\_ (Date) \_\_\_\_\_

Accepted For  
the  
LaCrosse County Highway Department  
by:

(Signature) \_\_\_\_\_ (Date) \_\_\_\_\_

(Title of Official) \_\_\_\_\_

X:\WORK\159839\5-final-dgn\51-drawings\10-Civil\Lead\CSD\SheetsPlan\SEC 01 Title 010101-1 (Title Sheet) LCCCHD 159839.dwg PLOT DATE: 5/13/2021 10:51 PM PLOT BY: SEH

COUNTY: LACROSSE  
 HWY: CTH NN  
 SEH PROJECT NO: 1234-56-78  
 PLOT BY : SEH  
 FILE LOCATION: X:\XO\11\CHD\159839\5-final-dsgn\51-drawings\10-Civ\cad\C3D\SheetsPlan\SEC 02 Typ Sec & Details\020101\_grn (General Notes).dwg  
 LAYOUT NAME: 01

### STANDARD ABBREVIATIONS

ABUT	ABUTMENT	ID	INSIDE DIAMETER
AC	ACRE	INV	INVERT
AGG	AGGREGATE	IP	IRON PIPE ON PIN
AECPRC	APRON ENDWALL FOR CULVERT PIPE REINFORCED CONCRETE	LHF	LEFT-HAND FORWARD
AECPCS	APRON ENDWALL FOR CULVERT PIPE CORRUGATED STEEL	L	LENGTH OF CURVE
ASPH	ASPHALTIC	LF	LINEAR FOOT
AVG	AVERAGE	LC	LONG CHORD OF CURVE
ADT	AVERAGE DAILY TRAFFIC	LS	LUMP SUM
BF	BACK FACE	MH	MANHOLE
BM	BENCH MARK	MOR	MID POINT OF RADIUS
BR	BRIDGE	NC	NORMAL CROWN
CE	COMMERCIAL ENTRANCE	NO	NUMBER
C/L	CENTER LINE	OBLIT	OBLITERATE
Δ	CENTRAL ANGLE OR DELTA	PAVT	PAVEMENT
COB	CENTER OF BARRIER	PE	PRIVATE ENTRANCE
CONC	CONCRETE	PVRC	POINT OF VERTICAL REVERSE CURVE
CPRC	CULVERT PIPE REINFORCED CONCRETE	QOR	QUARTER POINT OF RADIUS
CPRCHE	CULVERT PIPE REINFORCED CONCRETE HORIZONTAL ELLIPTICAL	R	RADIUS
CR	CREEK	REQ'D	REQUIRED
CY	CUBIC YARD	RES	RESIDENCE OR RESIDENTIAL
C&G	CURB AND GUTTER	RHF	RIGHT-HAND FORWARD
D	DEGREE OF CURVE	R/W	RIGHT-OF-WAY
DHV	DESIGN HOUR VOLUME	R	RIVER
DISCH	DISCHARGE	RDWY	ROADWAY
DG	DITCH GRADE	R/L	REFERENCE LINE
DWY	DRIVEWAY	SALV	SALVAGED
X	EAST GRID COORDINATE	SAN	SANITARY SEWER
EAT	STEEL PLATE BEAM GUARD ENERGY ABSORBING TERMINAL	SF	SQUARE FEET
EOR	END POINT OF RADIUS	SY	SQUARE YARD
EL	ELEVATION	SDD	STANDARD DETAIL DRAWINGS
ENT	ENTRANCE	STA	STATION
ESALS	EQUIVALENT SINGLE AXLE LOADS	SS	STORM SEWER
EXC	EXCAVATION	SSPRC	STORM SEWER PIPE REINFORCED CONCRETE
EBS	EXCAVATION BELOW SUBGRADE	SE	SUPERELEVATION RATE
EXIST	EXISTING	TC	TOP OF CURB
FC	FACE OF CURB	T OR TN	TOWN
FF	FACE TO FACE	T	TRUCKS (PERCENT OF)
FERT	FERTILIZE	TYP	TYPICAL
FE	FIELD ENTRANCE	VAR	VARIABLE
FL	FLOW LINE	VC	VERTICAL CURVE
FO	FIBER OPTIC	Y	NORTH GRID COORDINATE
CWT	HUNDREDWEIGHT	YD	YARD
HYD	HYDRANT		

### LCHD CONTACT:

LA CROSSE COUNTY HIGHWAY DEPARTMENT  
 301 CARLSON ROAD  
 WEST SALEM WI 54669  
 TELEPHONE: 608.786.3810  
 ATTENTION: RON CHAMBERLAIN  
 EMAIL: RCHAMBERLAIN@LACROSSECOUNTY.ORG

### DESIGN CONTACT:

SHORT ELLIOTT HENDRICKSON INC  
 329 JAY STREET, SUITE 301  
 LA CROSSE WI 54601  
 TELEPHONE: 608.498.4947  
 ATTENTION: JEREMY TOMESH  
 EMAIL: JTOMESH@SEHINC.COM

### DNR AREA LIAISON:

WI DEPT OF NATURAL RESOURCES  
 DNR SERVICE CENTER  
 3550 MORMON COULEE RD  
 LA CROSSE, WI 54601  
 TELEPHONE: 608.785.9115  
 ATTENTION: KAREN KALVELAGE  
 EMAIL: KAREN.KALVELAGE@WISCONSIN.GOV

### UTILITY CONTACT LIST:

TO BE DETERMINED

LIST DATE \_\_/\_\_/\_\_

### GENERAL NOTES:

- NO TREES OR SHRUBS SHALL BE REMOVED WITHOUT APPROVAL OF THE ENGINEER.
- THE LOCATIONS OF EXISTING AND PROPOSED UTILITY INSTALLATIONS AS SHOWN ON THE PLANS ARE APPROXIMATE. THERE MAY BE OTHER UTILITY INSTALLATIONS WITHIN THE PROJECT AREA THAT ARE NOT SHOWN.
- THE CONTRACTOR SHALL NOTIFY DIGGERS HOTLINE AND AFFECTED UTILITIES PRIOR TO THE START OF WORK. ANY LOCAL MUNICIPAL UTILITY WHICH IS NOT A MEMBER OF THE DIGGERS HOTLINE MUST BE CONTACTED SEPARATELY.
- PRIOR TO ORDERING DRAINAGE PIPES AND STRUCTURES, THE CONTRACTOR SHALL VERIFY RELATED DRAINAGE INFORMATION IN THE PLANS WITH THE ENGINEER.
- CONCRETE COLLAR REQUIRED AT JOINTS BETWEEN EXISTING AND NEW CULVERT PIPE.
- JOINT TIES WILL BE REQUIRED ON THE ENDWALL AND LAST 2 SECTIONS PER STD 520 AND 524 ON ALL CULVERT PIPES.
- INLET AND DISCHARGE ELEVATIONS FOR DRAINAGE STRUCTURES SHOWN ON THE PLAN MAY BE ADJUSTED BY THE ENGINEER TO FIT FIELD CONDITIONS.
- WETLANDS, WATERWAYS, AND OTHER ENVIRONMENTALLY SENSITIVE AREAS SHALL BE PROTECTED AT ALL TIMES. DO NOT STORE EQUIPMENT OR MATERIALS NEAR THESE SITES UNLESS APPROVED BY THE ENGINEER.
- BROKEN CONCRETE CONTAINING RE-BAR SHALL NOT BE USED AS RIPRAP.
- CROSS SECTIONS SHOWN INCLUDE THE THICKNESS OF TOPSOIL WHERE REQUIRED. TOPSOIL SHALL BE REPLACED WITH 4-INCH TYPICAL DEPTH.
- TRAFFIC CONTROL DEVICES SHALL BE ADJUSTED TO FIT FIELD CONDITIONS AS DIRECTED BY THE ENGINEER.
- REMOVAL OF EROSION CONTROL DEVICES IS INCLUDED IN THE COST OF THEIR RESPECTIVE BID ITEMS.
- THE EROSION CONTROL FEATURES AS SHOWN IN THE PLANS ARE AT SUGGESTED LOCATIONS. EXACT LOCATIONS WILL BE DETERMINED BY THE ENGINEER IN THE FIELD.
- ASPHALTIC AND CONCRETE SURFACES SHALL BE SAWCUT AT THE MATCH LINE AS SHOWN ON THE PLAN OR AS DIRECTED BY THE ENGINEER.
- DISTURBED AREAS WITHIN THE RIGHT OF WAY, EXCEPT THE AREAS WITHIN THE FINISHED SHOULDER POINTS, SHALL BE TOPSOILED, FERTILIZED AND SEEDED.
- FERTILIZER SHALL NOT BE USED NEAR NAVIGABLE WATERWAYS OR WETLANDS.
- A CONVERSION FACTOR OF 2.0 TONS/CY IS USED TO ESTIMATE QUANTITIES FOR BASE AGGREGATE DENSE.
- APPLY TACK COAT AT A RATE OF 0.07 GAL/SY TO MILLED SURFACE AND 0.05 GA/SY BETWEEN LAYERS OF HMA PAVEMENT.
- HMA PAVEMENT WEIGHT CALCULATIONS ARE BASED ON 112 LB/SY/IN.
- THE CONTRACTOR'S PAVING OPERATIONS SHALL BE CONSISTENT WITH THE PLAN AND TYPICAL SECTIONS AND CONSTRUCTED TO PREVENT HMA LONGITUDINAL JOINTS FROM BEING LOCATED WITHIN A DRIVING, TURNING, PASSING OR PARKING LANE.
- ALL TYPES OF ASPHALTIC PAVEMENT SHALL BE CONSTRUCTED WITH THE FOLLOWING LAYERS AND GRADATIONS:

ITEM CODE	HMA PAVEMENT ITEM
AP01	4 SMA 58-34 V
	3 HT 58-34 S
AP02	4 MT 58-34 S

**PRELIMINARY  
 30% REVIEW  
 NOT FOR BIDDING OR  
 CONSTRUCTION**

RUNOFF COEFFICIENT TABLE

LAND USE:	HYDROLOGIC SOIL GROUP											
	A			B			C			D		
	SLOPE RANGE (PERCENT)			SLOPE RANGE (PERCENT)			SLOPE RANGE (PERCENT)			SLOPERANGE (PERCENT)		
	0-2	2-6	6 & OVER	0-2	2-6	6 & OVER	0-2	2-6	6 & OVER	0-2	2-6	6 & OVER
ROW CROPS	.08 .22	.16 .30	.22 .38	.12 .26	.20 .34	.27 .44	.15 .30	.24 .37	.33 .50	.19 .34	.28 .41	.38 .56
MEDIAN STRIP- TURF	.19 .24	.20 .26	.24 .30	.19 .25	.22 .28	.26 .33	.20 .26	.23 .30	.30 .37	.20 .27	.25 .32	.30 .40
SIDE SLOPE- TURF			.25 .32			.27 .34			.28 .36			.30 .38
PAVEMENT:												
ASPHALT	.70 - .95											
CONCRETE	.80 - .95											
BRICK	.70 - .80											
DRIVES, WALKS	.75 - .85											
ROOFS	.75 - .95											
GRAVEL ROADS, SHOULDERS	.40 - .60											

TOTAL PROJECT AREA = \_\_\_ ACRES  
 TOTAL AREA EXPECTED TO BE DISTURBED BY CONSTRUCTION ACTIVITIES = \_\_\_ ACRES

TO OBTAIN LOCATION OF PARTICIPANTS' UNDERGROUND FACILITIES BEFORE YOU DIG IN WISCONSIN



Dial **811** or (800)242-8511

[www.DiggersHotline.com](http://www.DiggersHotline.com)

NOTE: WIS. STATUTE 182.0175 (1974) REQUIRES MIN. OF 3 WORK DAYS NOTICE BEFORE YOU EXCAVATE.

DRAWN BY: SEH			
DESIGNER: SEH			
CHECKED BY: SEH			
DESIGN TEAM	NO.	BY	DATE
			REVISIONS



Short Elliott Hendrickson Inc.  
 329 Jay Street, Suite 301  
 La Crosse, WI 54601-4034  
 608.782.3161 main  
[www.sehinc.com](http://www.sehinc.com)

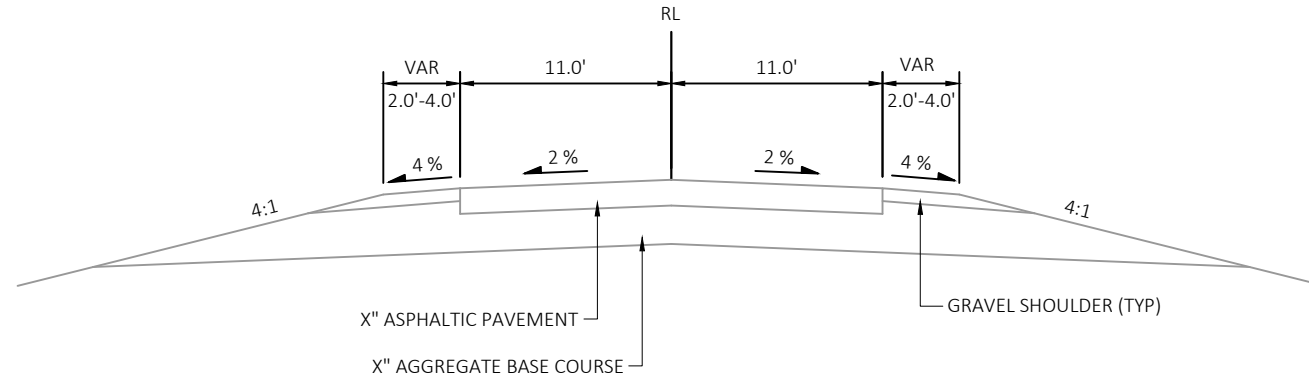
**TOWNS OF GREENFIELD & WASHINGTON  
 LACROSSE COUNTY, WISCONSIN**

GENERAL NOTES

FILE NO.  
159839

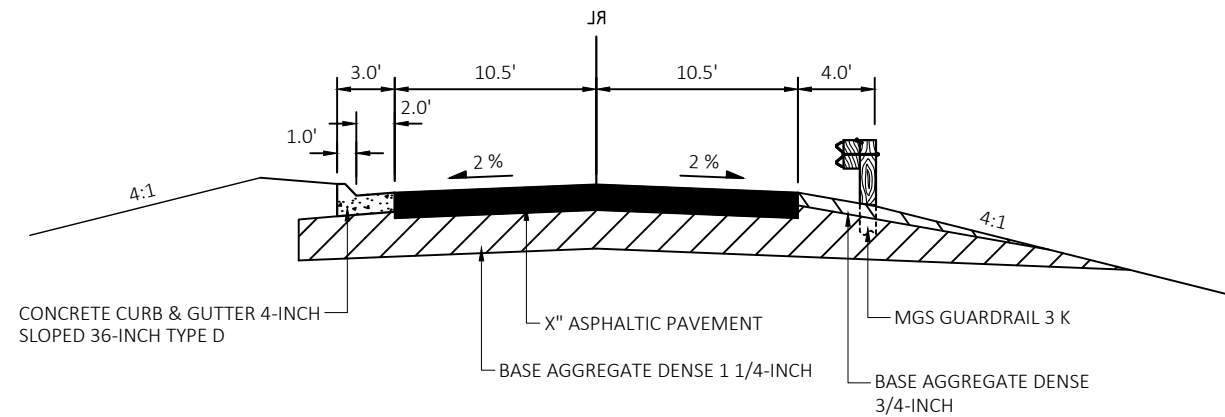
**02**  
**124**

PLOT SCALE: 1"=5'



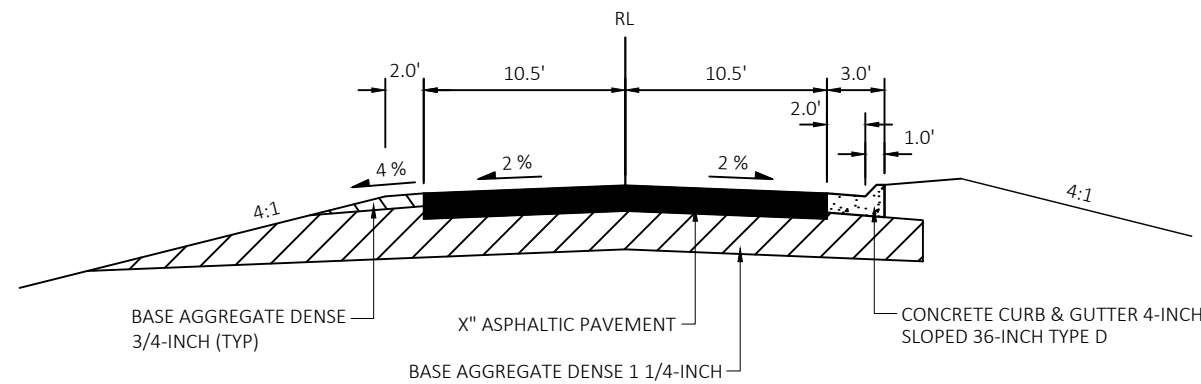
**EXISTING TYPICAL SECTION**

CTH NN  
STA 102+19.17 - 194+64.02



**FINISHED TYPICAL SECTION**

CTH NN  
STA 102+19.17 194+64.02



**FINISHED TYPICAL SECTION**

CTH NN  
STA 102+19.17 194+64.02

DRAWN BY:	SEH			
DESIGNER:	SEH			
CHECKED BY:	SEH			
DESIGN TEAM	NO.	BY	DATE	REVISIONS



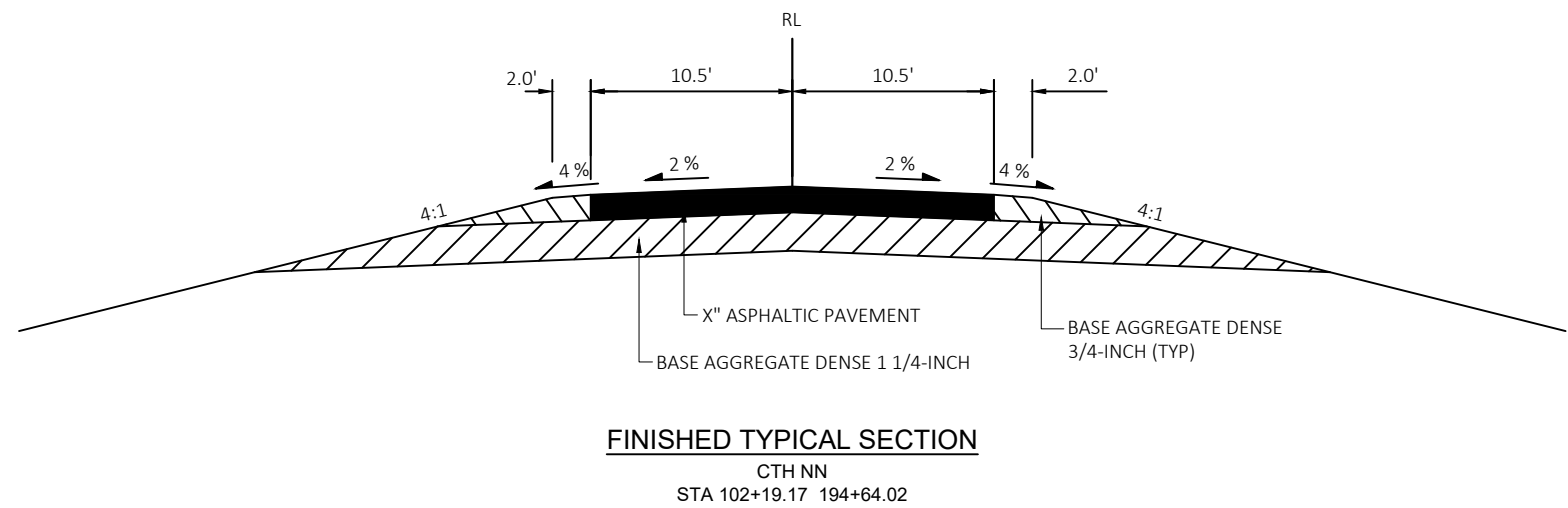
**TOWNS OF GREENFIELD & WASHINGTON**  
**LACROSSE COUNTY, WISCONSIN**

TYPICAL SECTIONS

FILE NO.  
159839

**03**  
**124**

COUNTY: LACROSSE  
 HWY: CTH NN  
 SEH PROJECT NO: 1234-56-78  
 PLOT BY : SEH  
 FILE LOCATION: X:\WORK\LCCHD\159839\5-final-dsgr\51-drawings\10-civil\lead\c3d\Sheets\Plan\SEC 02 Typ Sec & Details\020301\_1s (Typical Section).dwg  
 LAYOUT NAME: 02



DRAWN BY:	SEH			
DESIGNER:	SEH			
CHECKED BY:	SEH			
DESIGN TEAM	NO.	BY	DATE	REVISIONS



**SEH**  
 Short Elliott Hendrickson Inc.  
 329 Jay Street, Suite 301  
 La Crosse, WI 54601-4034  
 608.782.3161 main  
 www.sehinc.com

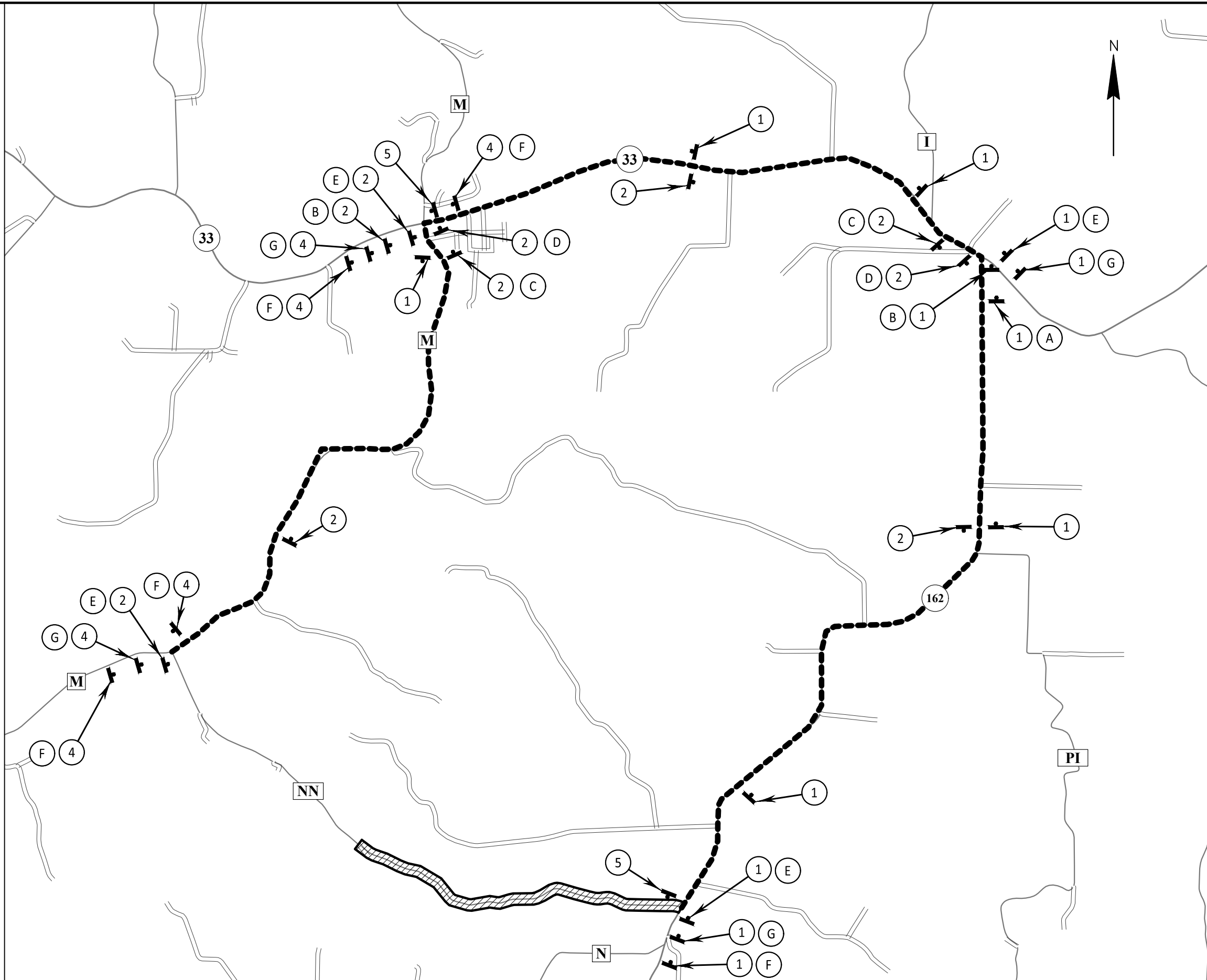
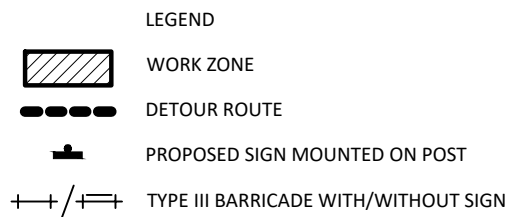
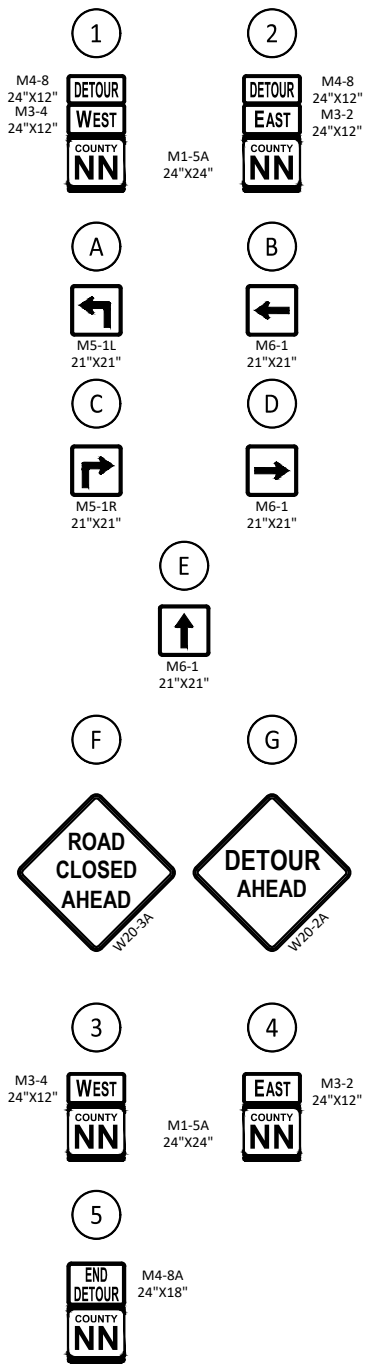
**TOWNS OF GREENFIELD & WASHINGTON  
 LACROSSE COUNTY, WISCONSIN**

**TYPICAL SECTIONS**

FILE NO.  
159839

**04**  
**124**

PLOT SCALE: 1.0 IN = 10.0 FT



DRAWN BY:	SEH			
DESIGNER:	SEH			
CHECKED BY:	SEH			
DESIGN TEAM	NO.	BY	DATE	REVISIONS



**SEH**  
 Short Elliott Hendrickson Inc.  
 329 Jay Street, Suite 301  
 La Crosse, WI 54601-4034  
 608.782.3161 main  
 www.sehinc.com

**TOWNS OF GREENFIELD & WASHINGTON  
 LA CROSSE COUNTY, WISCONSIN**

**DETOUR**

FILE NO.  
159839

**05**  
**124**

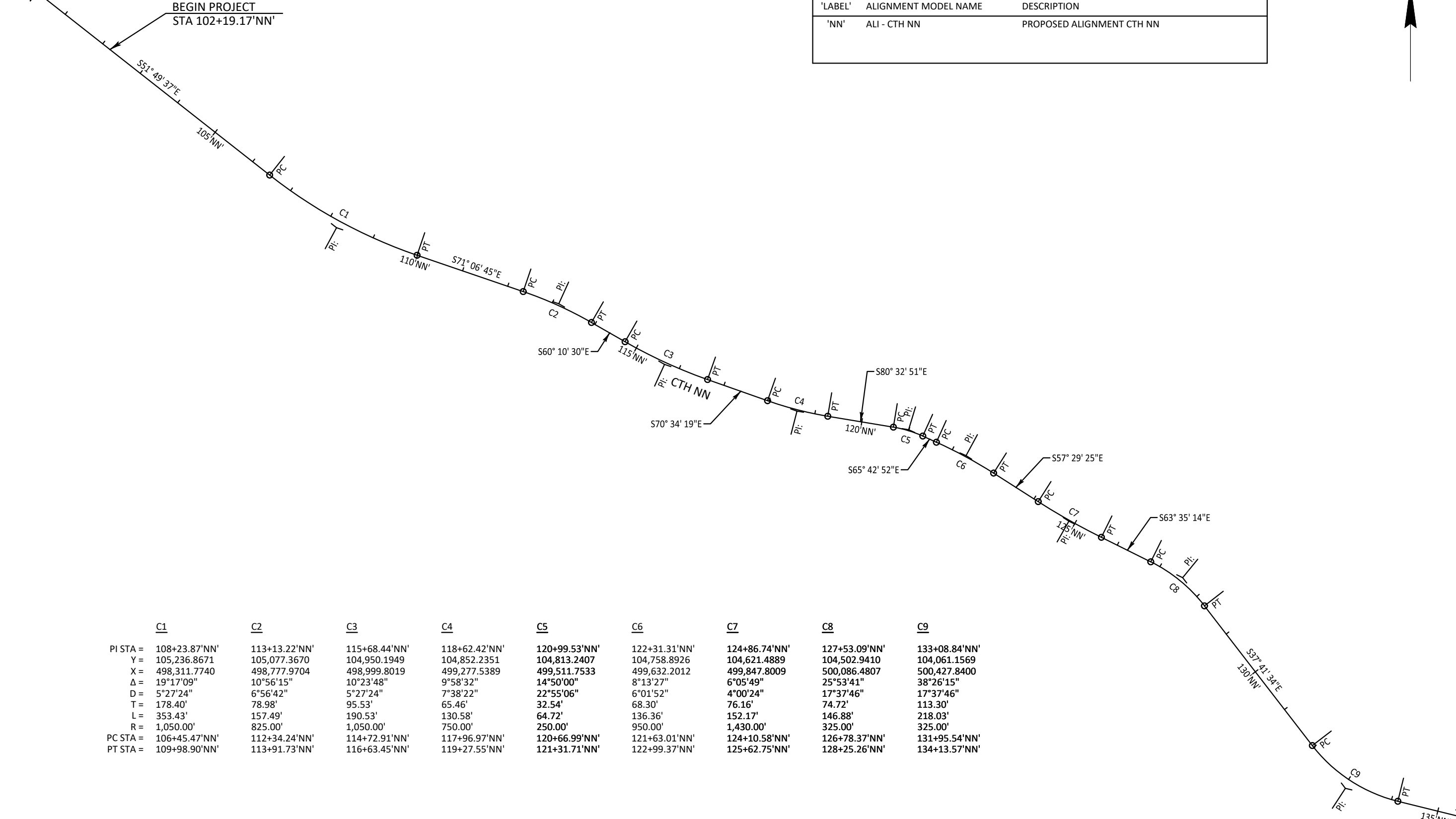


COUNTY: LACROSSE  
 HWY: CTH NN  
 SEH PROJECT NO: 1234-56-78  
 PLOT BY : SEH  
 FILE LOCATION: X:\XO\1\LCCHD\159839\5-final-dsgn\51-drawings\10-Civ\cad\C3D\SheetsPlan\SEC 02 Typ Sec & Details\027201\_ad (All Details).dwg  
 LAYOUT NAME: 01

STA 100+00.00'NN' POT:  
 Y=105,746.0528  
 X=497,664.0893

BEGIN PROJECT  
 STA 102+19.17'NN'

REFERENCE LINE LABEL/MODEL NAME INDEX		
'LABEL'	ALIGNMENT MODEL NAME	DESCRIPTION
'NN'	ALI - CTH NN	PROPOSED ALIGNMENT CTH NN



	<u>C1</u>	<u>C2</u>	<u>C3</u>	<u>C4</u>	<u>C5</u>	<u>C6</u>	<u>C7</u>	<u>C8</u>	<u>C9</u>
PI STA =	108+23.87'NN'	113+13.22'NN'	115+68.44'NN'	118+62.42'NN'	120+99.53'NN'	122+31.31'NN'	124+86.74'NN'	127+53.09'NN'	133+08.84'NN'
Y =	105,236.8671	105,077.3670	104,950.1949	104,852.2351	104,813.2407	104,758.8926	104,621.4889	104,502.9410	104,061.1569
X =	498,311.7740	498,777.9704	498,999.8019	499,277.5389	499,511.7533	499,632.2012	499,847.8009	500,086.4807	500,427.8400
Δ =	19°17'09"	10°56'15"	10°23'48"	9°58'32"	14°50'00"	8°13'27"	6°05'49"	25°53'41"	38°26'15"
D =	5°27'24"	6°56'42"	5°27'24"	7°38'22"	22°55'06"	6°01'52"	4°00'24"	17°37'46"	17°37'46"
T =	178.40'	78.98'	95.53'	65.46'	32.54'	68.30'	76.16'	74.72'	113.30'
L =	353.43'	157.49'	190.53'	130.58'	64.72'	136.36'	152.17'	146.88'	218.03'
R =	1,050.00'	825.00'	1,050.00'	750.00'	250.00'	950.00'	1,430.00'	325.00'	325.00'
PC STA =	106+45.47'NN'	112+34.24'NN'	114+72.91'NN'	117+96.97'NN'	120+66.99'NN'	121+63.01'NN'	124+10.58'NN'	126+78.37'NN'	131+95.54'NN'
PT STA =	109+98.90'NN'	113+91.73'NN'	116+63.45'NN'	119+27.55'NN'	121+31.71'NN'	122+99.37'NN'	125+62.75'NN'	128+25.26'NN'	134+13.57'NN'

DRAWN BY:	SEH			
DESIGNER:	SEH			
CHECKED BY:	SEH			
DESIGN TEAM	NO.	BY	DATE	REVISIONS



Short Elliott Hendrickson Inc.  
 329 Jay Street, Suite 301  
 La Crosse, WI 54601-4034  
 608.782.3161 main  
 www.sehinc.com

**TOWNS OF GREENFIELD & WASHINGTON**  
**LA CROSSE COUNTY, WISCONSIN**

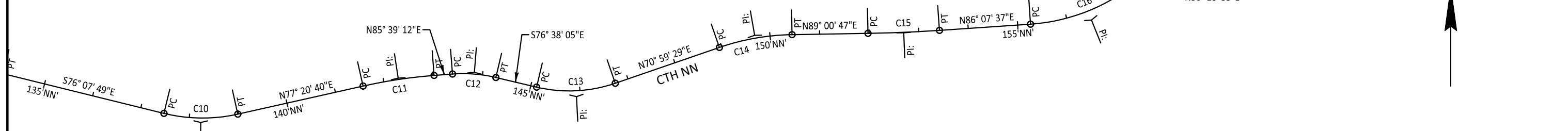
ALIGNMENT DIAGRAM

FILE NO.  
159839

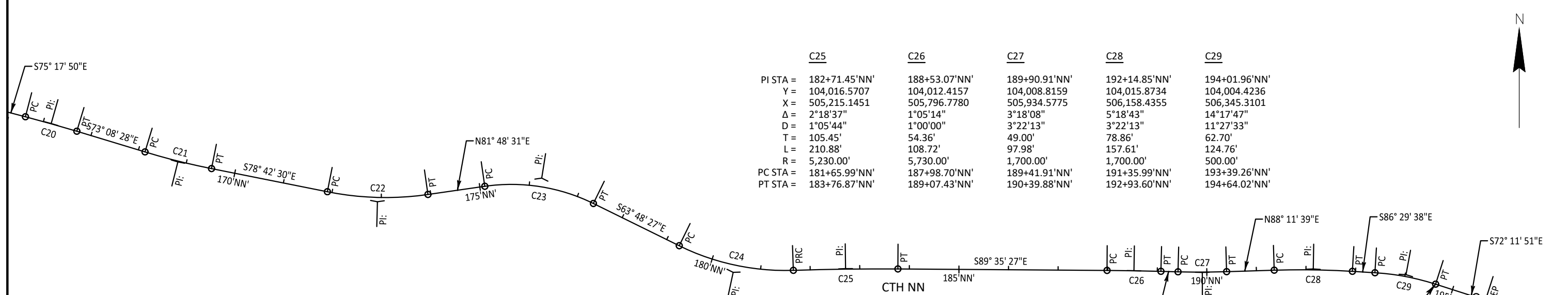
**06**  
**124**

PLOT SCALE: 1.0 IN = 200.0 FT

	C10	C11	C12	C13	C14	C15	C16
PI STA =	138+24.48'NN'	142+29.81'NN'	143+83.75'NN'	145+94.66'NN'	149+70.32'NN'	152+69.68'NN'	156+49.27'NN'
Y =	103,935.4960	104,024.8991	104,036.5862	103,987.6691	104,111.4673	104,116.6449	104,142.2870
X =	500,936.7623	501,334.9170	501,488.6716	501,694.5557	502,053.9161	502,354.4819	502,733.2359
Δ =	26°31'31"	8°18'31"	17°42'44"	32°22'26"	18°01'18"	2°53'10"	35°57'04"
D =	17°37'46"	5°43'46"	20°06'14"	20°06'14"	12°03'44"	1°59'59"	15°04'40"
T =	76.60'	72.63'	44.41'	82.73'	75.32'	72.18'	123.29'
L =	150.46'	145.01'	88.10'	161.03'	149.41'	144.32'	238.44'
R =	325.00'	1,000.00'	285.00'	285.00'	475.00'	2,865.00'	380.00'
PC STA =	137+47.88'NN'	141+57.17'NN'	143+39.34'NN'	145+11.93'NN'	148+94.99'NN'	151+97.51'NN'	155+25.98'NN'
PT STA =	138+98.34'NN'	143+02.19'NN'	144+27.45'NN'	146+72.96'NN'	150+44.40'NN'	153+41.83'NN'	157+64.42'NN'



	C17	C18	C19	C20
PI STA =	158+73.03'NN'	161+76.12'NN'	164+47.22'NN'	166+16.25'NN'
Y =	104,290.8042	104,432.3346	104,351.9446	104,309.0418
X =	502,911.3387	503,179.9113	503,449.5886	503,613.0921
Δ =	12°02'10"	44°23'14"	1°53'47"	2°09'22"
D =	9°01'23"	22°55'06"	1°59'59"	1°59'59"
T =	66.94'	101.99'	47.42'	53.91'
L =	133.40'	193.68'	94.82'	107.81'
R =	635.00'	250.00'	2,865.00'	2,865.00'
PC STA =	158+06.09'NN'	160+74.13'NN'	163+99.80'NN'	165+62.34'NN'
PT STA =	159+39.48'NN'	162+67.81'NN'	164+94.63'NN'	166+70.15'NN'



	C20	C21	C22	C23	C24
PI STA =	166+16.25'NN'	168+83.06'NN'	172+93.38'NN'	176+26.19'NN'	180+49.53'NN'
Y =	104,309.0418	104,231.6592	104,151.2971	104,198.9990	104,009.0477
X =	503,613.0921	503,868.4466	504,270.9282	504,602.3137	504,988.4738
Δ =	2°09'22"	5°34'02"	19°28'58"	34°23'01"	28°05'36"
D =	1°59'59"	4°01'15"	9°32'57"	15°16'44"	11°48'49"
T =	53.91'	69.29'	103.01'	116.02'	121.34'
L =	107.81'	138.47'	204.02'	225.04'	237.81'
R =	2,865.00'	1,425.00'	600.00'	375.00'	485.00'
PC STA =	165+62.34'NN'	168+13.77'NN'	171+90.37'NN'	175+10.17'NN'	179+28.19'NN'
PT STA =	166+70.15'NN'	169+52.24'NN'	173+94.39'NN'	177+35.21'NN'	181+65.99'NN'

	C25	C26	C27	C28	C29
PI STA =	182+71.45'NN'	188+53.07'NN'	189+90.91'NN'	192+14.85'NN'	194+01.96'NN'
Y =	104,016.5707	104,012.4157	104,008.8159	104,015.8734	104,004.4236
X =	505,215.1451	505,796.7780	505,934.5775	506,158.4355	506,345.3101
Δ =	2°18'37"	1°05'14"	3°18'08"	5°18'43"	14°17'47"
D =	1°05'44"	1°00'00"	3°22'13"	3°22'13"	11°27'33"
T =	105.45'	54.36'	49.00'	78.86'	62.70'
L =	210.88'	108.72'	97.98'	157.61'	124.76'
R =	5,230.00'	5,730.00'	1,700.00'	1,700.00'	500.00'
PC STA =	181+65.99'NN'	187+98.70'NN'	189+41.91'NN'	191+35.99'NN'	193+39.26'NN'
PT STA =	183+76.87'NN'	189+07.43'NN'	190+39.88'NN'	192+93.60'NN'	194+64.02'NN'

END PROJECT  
 STA 194+64.02'NN'

STA 195+50.00'NN' POT:  
 Y=103,958.9638  
 X=506,486.8806

DRAWN BY: SEH				
DESIGNER: SEH				
CHECKED BY: SEH				
DESIGN TEAM	NO.	BY	DATE	REVISIONS



**TOWNS OF GREENFIELD & WASHINGTON**  
**LA CROSSE COUNTY, WISCONSIN**

ALIGNMENT DIAGRAM

FILE NO. 159839  
**07**  
**124**

DRAWN BY:	SEH				
DESIGNER:	SEH				
CHECKED BY:	SEH				
DESIGN TEAM	NO.	BY	DATE	REVISIONS	



**SEH**  
Short Elliott Hendrickson Inc.  
329 Jay Street, Suite 301  
La Crosse, WI 54601-4034  
608.782.3161 main  
www.sehinc.com

**TOWNS OF GREENFIELD & WASHINGTON  
LACROSSE COUNTY, WISCONSIN**

**MISCELLANEOUS QUANTITIES**

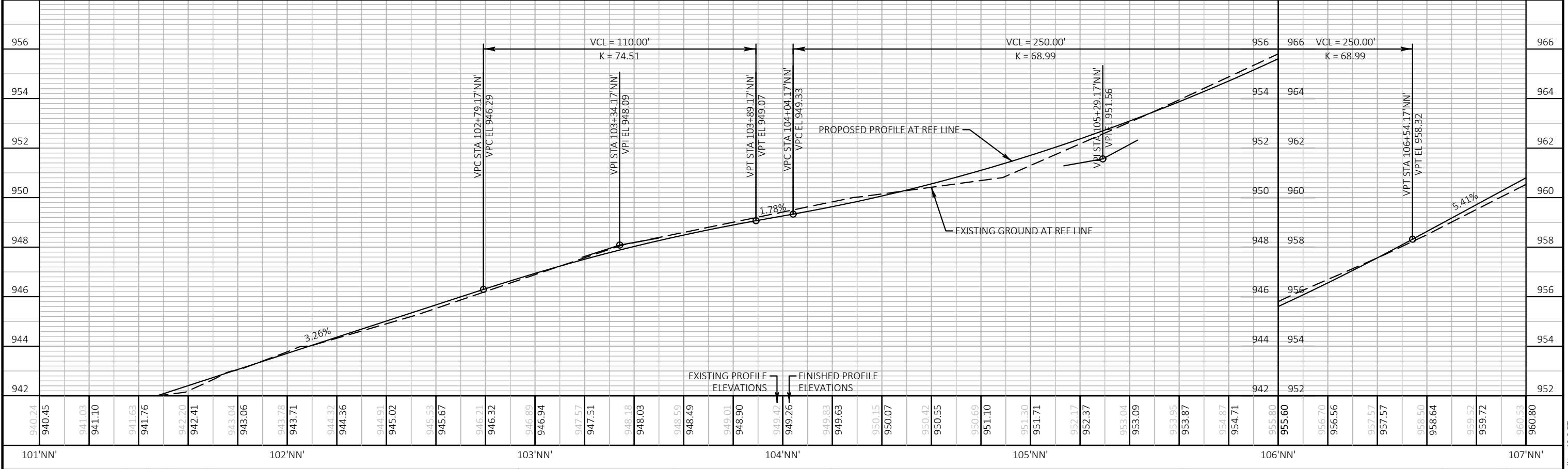
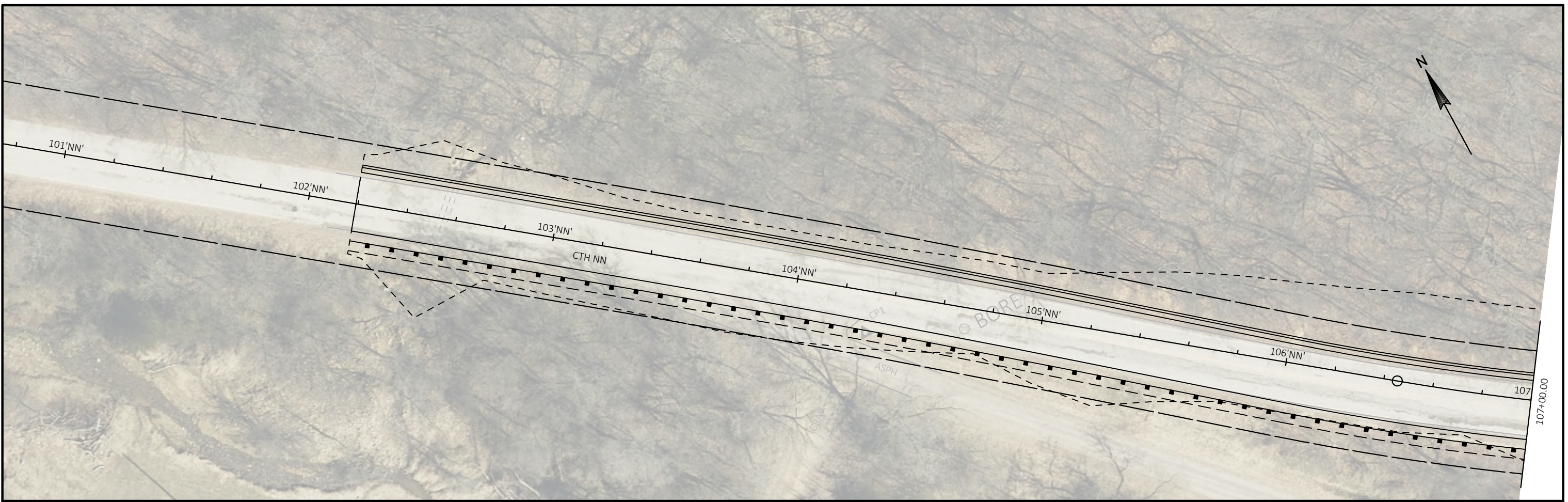
FILE NO.  
159839

**08**  
**124**



FILE LOCATION: X:\K0\1\LC\CD\159839\5-final.dgn\51-drawings\10-civil\cad\C3D\Sheets\Plan & Profile\050100-pp (Plan & Profile).dwg  
LAYOUT NAME: 01

PLOT BY: SEH  
SEH PROJECT NO.: 159839  
HWY: CTH NN  
COUNTY: LACROSSE



DRAWN BY: SEH			
DESIGNER: SEH			
CHECKED BY: SEH			
DESIGN TEAM	NO.	BY	DATE
			REVISIONS



**SEH**  
Short Elliott Hendrickson Inc.  
329 Jay Street, Suite 301  
La Crosse, WI 54601-4034  
608.782.3161 main  
www.sehinc.com

**TOWNS OF GREENFIELD & WASHINGTON  
LACROSSE COUNTY, WISCONSIN**

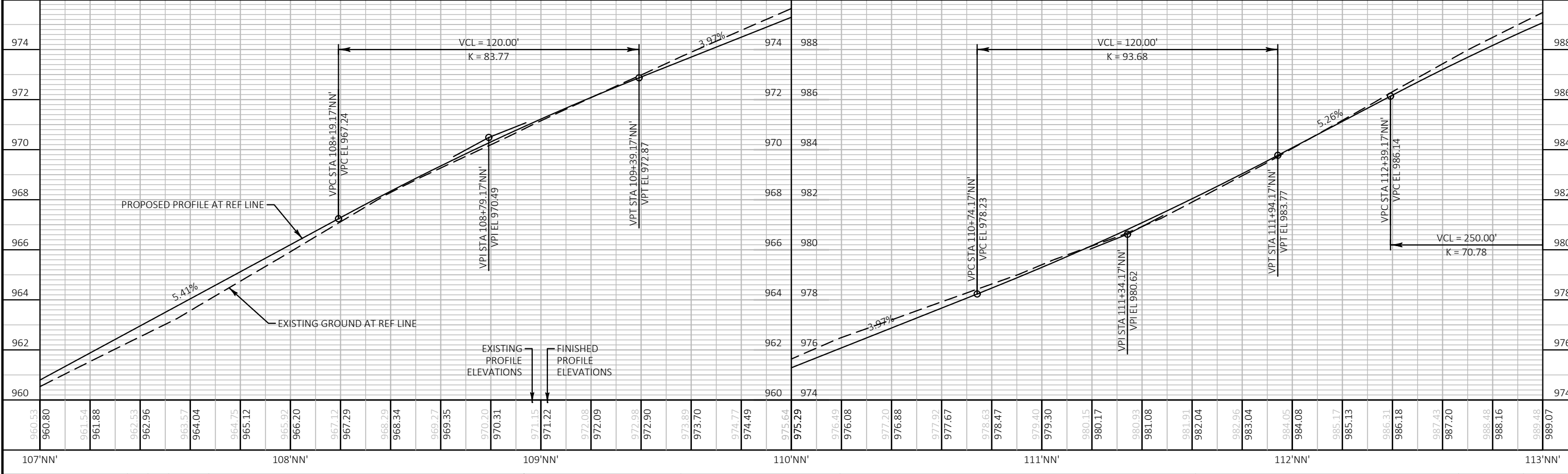
**PLAN AND PROFILE**

FILE NO.  
159839

**09  
124**

PLOT SCALE: 1.0 IN = 40.0 FT





DRAWN BY: SEH			
DESIGNER: SEH			
CHECKED BY: SEH			
DESIGN TEAM	NO.	BY	DATE
			REVISIONS



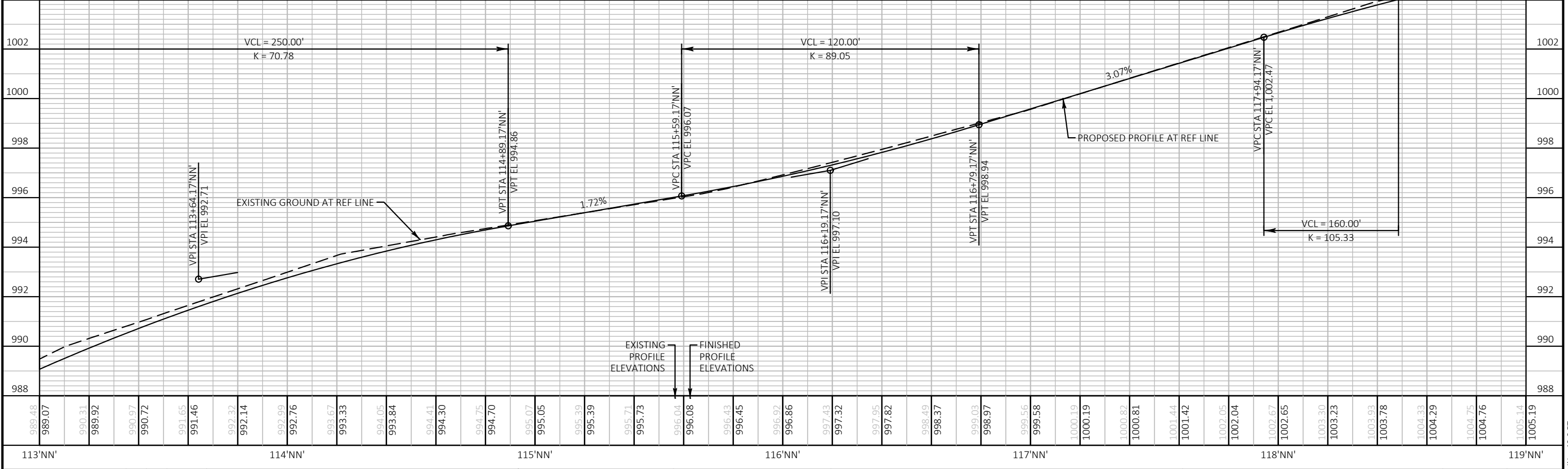
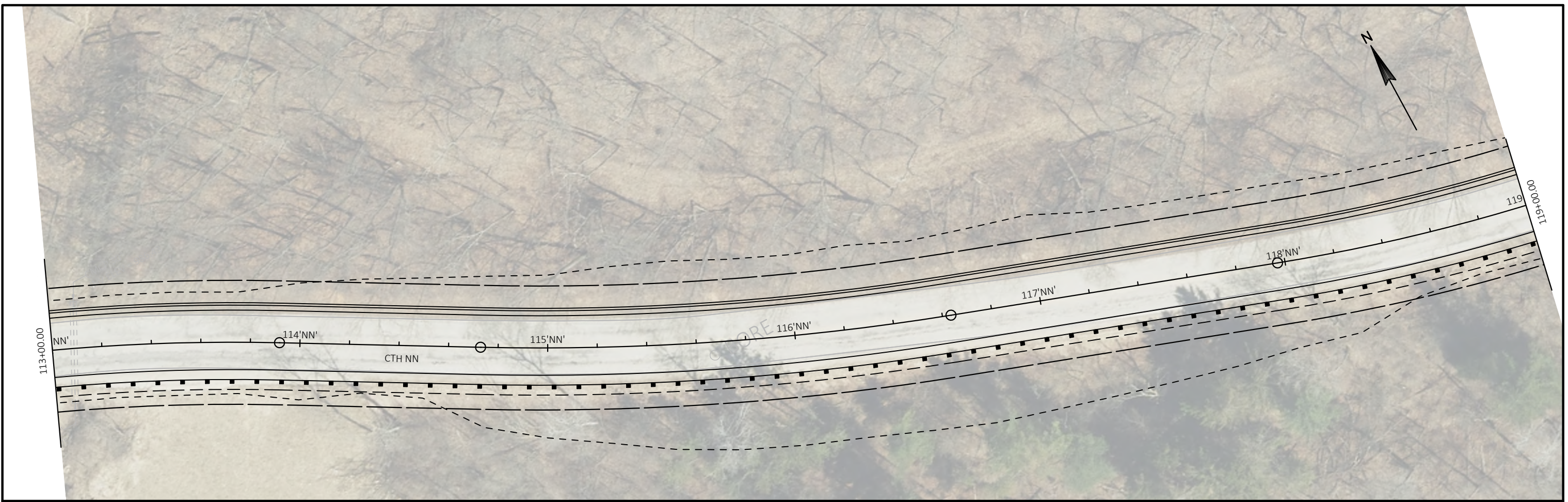
**TOWNS OF GREENFIELD & WASHINGTON  
 LACROSSE COUNTY, WISCONSIN**

**PLAN AND PROFILE**

FILE NO.  
159839

**10**  
**124**





DESIGN TEAM	NO.	BY	DATE	REVISIONS
DRAWN BY: SEH DESIGNER: SEH CHECKED BY: SEH				



**TOWNS OF GREENFIELD & WASHINGTON  
 LACROSSE COUNTY, WISCONSIN**

**PLAN AND PROFILE**

FILE NO.  
159839

**11**  
**124**



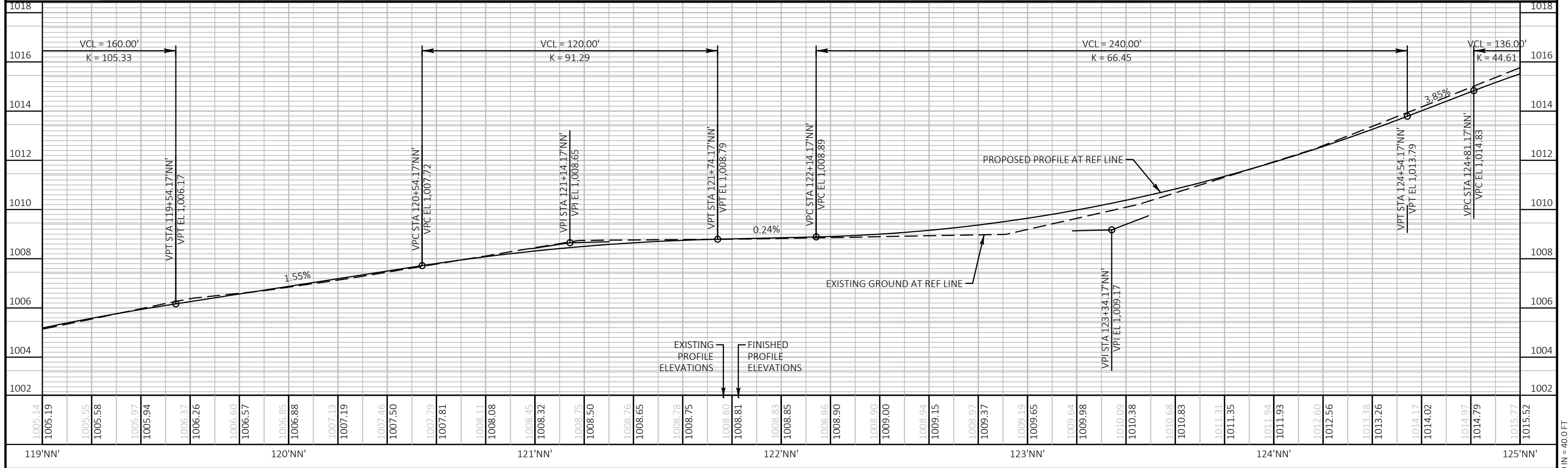
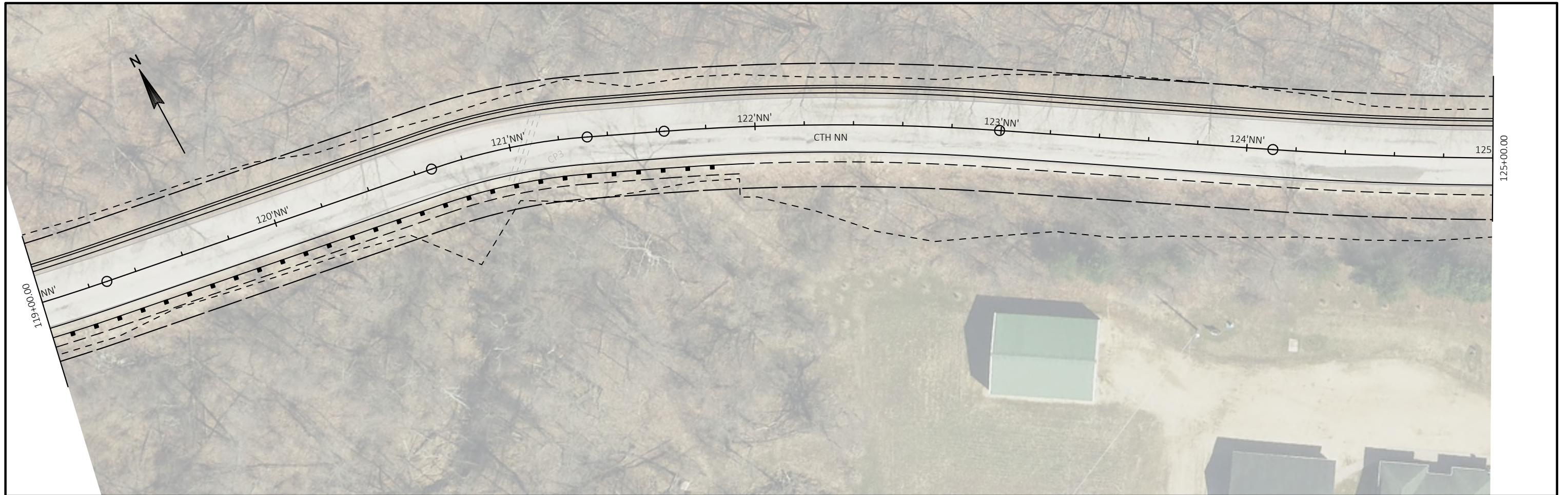
FILE LOCATION: X:\K\0\1\1\001\159839\5-final.dgn\151-drawings\10-civil\cad\C3D\SheetsPlan\SEC 05 Plan & Profile\051000-ppf (Plan & Profile).dwg  
LAYOUT NAME: 04

PLOT BY : SEH

SEH PROJECT NO.: 159839

HWY: CTH NN

COUNTY: LACROSSE



DESIGNED BY: SEH	NO.	BY	DATE	REVISIONS
CHECKED BY: SEH				
DESIGN TEAM				



**TOWNS OF GREENFIELD & WASHINGTON  
LACROSSE COUNTY, WISCONSIN**

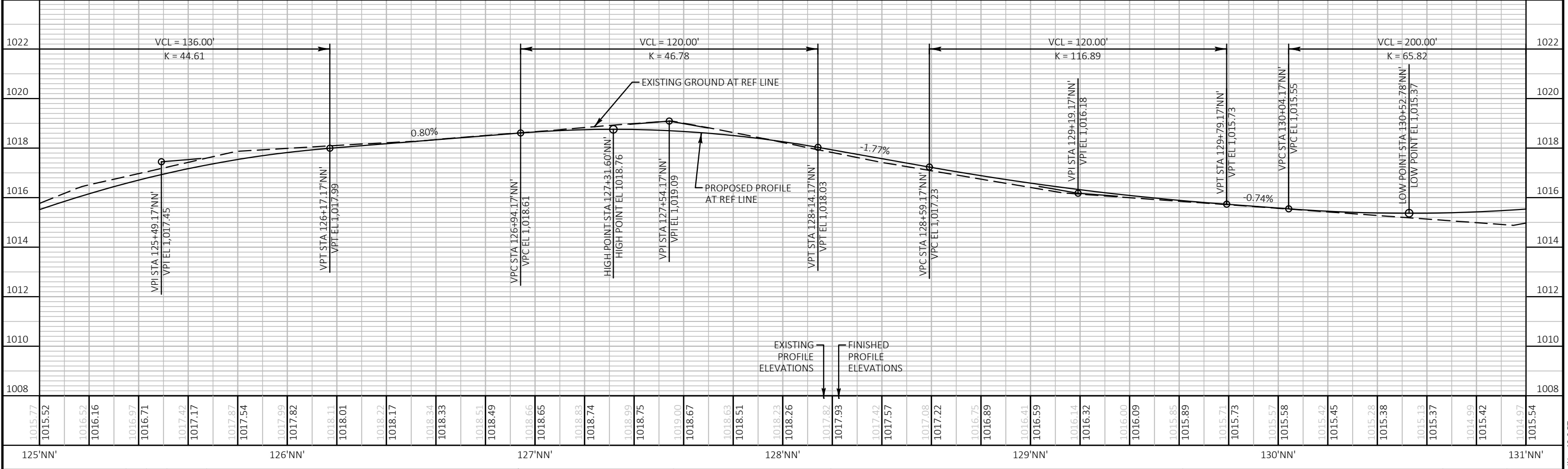
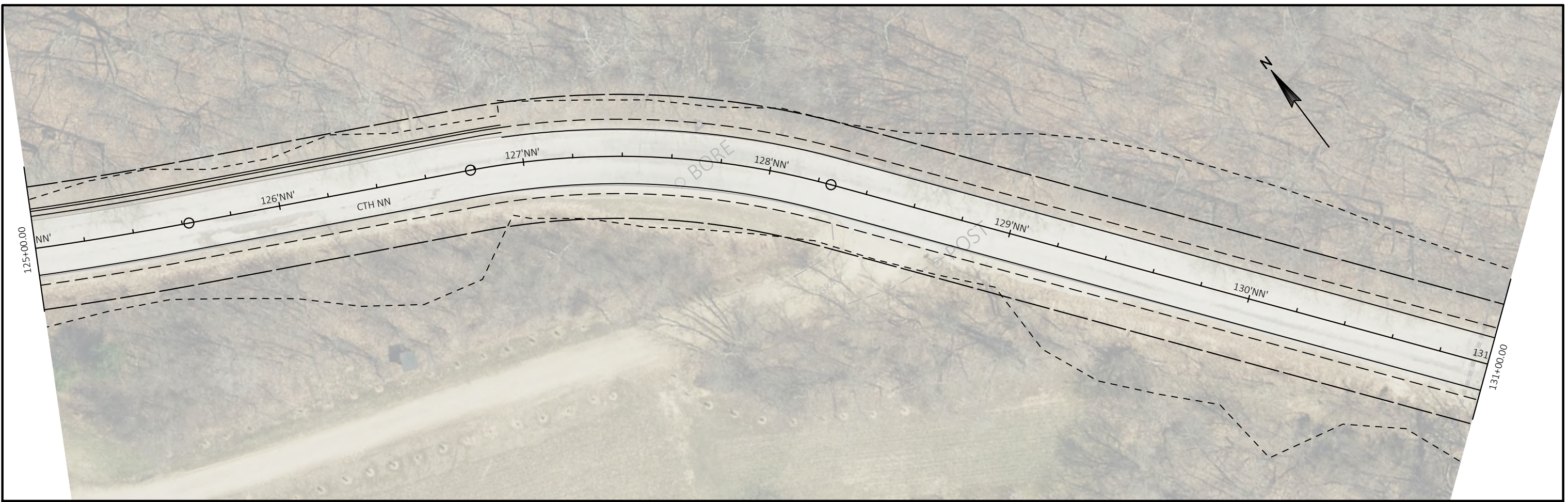
**PLAN AND PROFILE**

FILE NO.  
159839

**12**  
**124**

PLOT SCALE: 1.0 IN = 40.0 FT





DRAWN BY:	SEH		
DESIGNER:	SEH		
CHECKED BY:	SEH		
DESIGN TEAM	NO.	BY	DATE



Short Elliott Hendrickson Inc.  
 329 Jay Street, Suite 301  
 La Crosse, WI 54601-4034  
 608.782.3161 main  
 www.sehinc.com

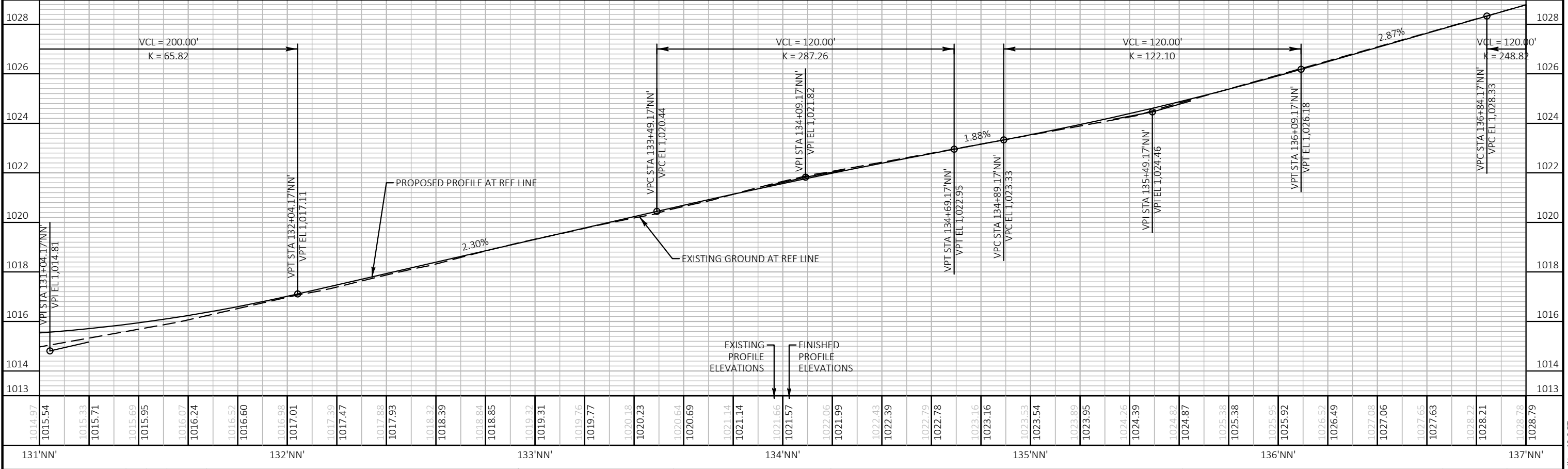
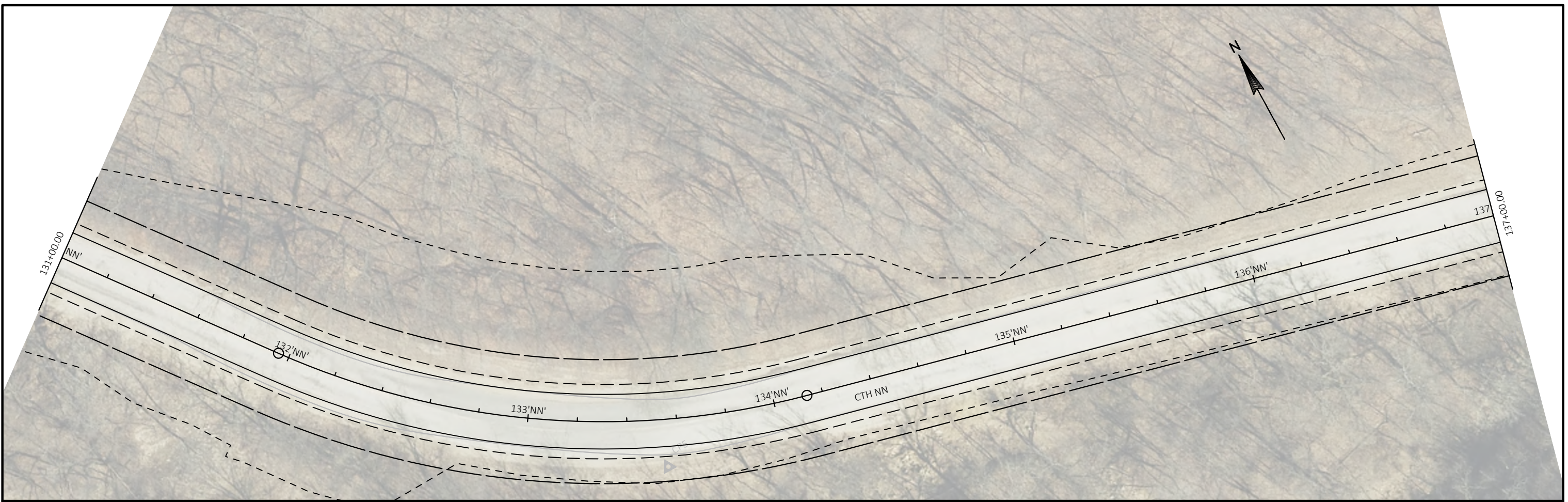
**TOWNS OF GREENFIELD & WASHINGTON  
 LACROSSE COUNTY, WISCONSIN**

**PLAN AND PROFILE**

FILE NO.  
 159839

**13**  
**124**





DRAWN BY: SEH			
DESIGNER: SEH			
CHECKED BY: SEH			
DESIGN TEAM	NO.	BY	DATE
			REVISIONS

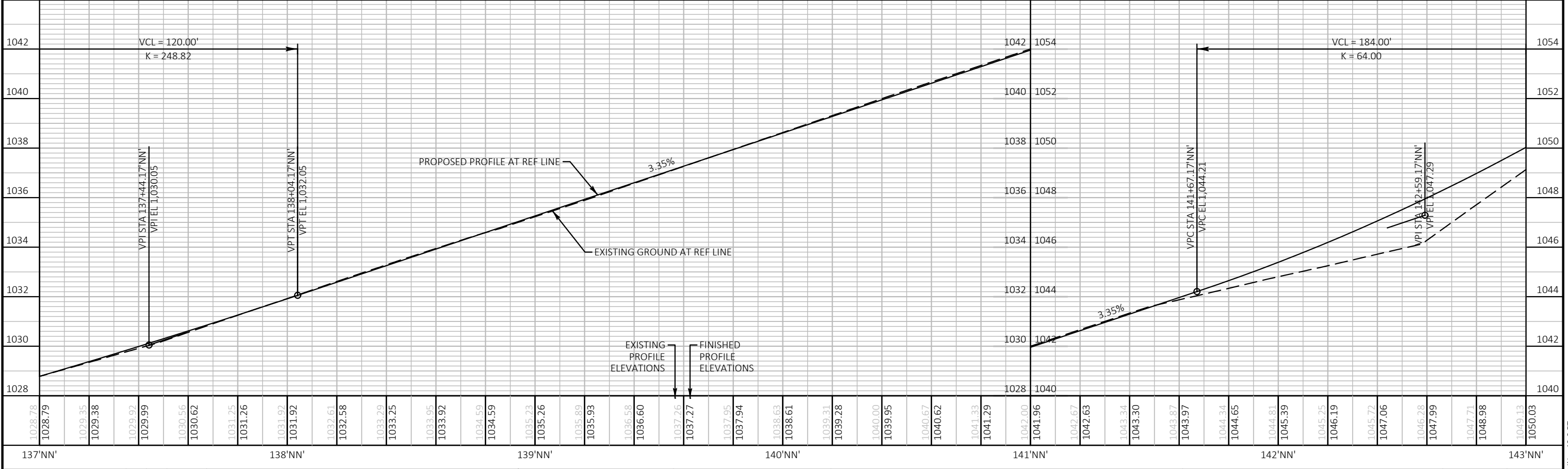


**TOWNS OF GREENFIELD & WASHINGTON  
 LACROSSE COUNTY, WISCONSIN**

**PLAN AND PROFILE**

FILE NO. 159839	<b>14</b>
	<b>124</b>





DRAWN BY:	SEH			
DESIGNER:	SEH			
CHECKED BY:	SEH			
DESIGN TEAM	NO.	BY	DATE	REVISIONS



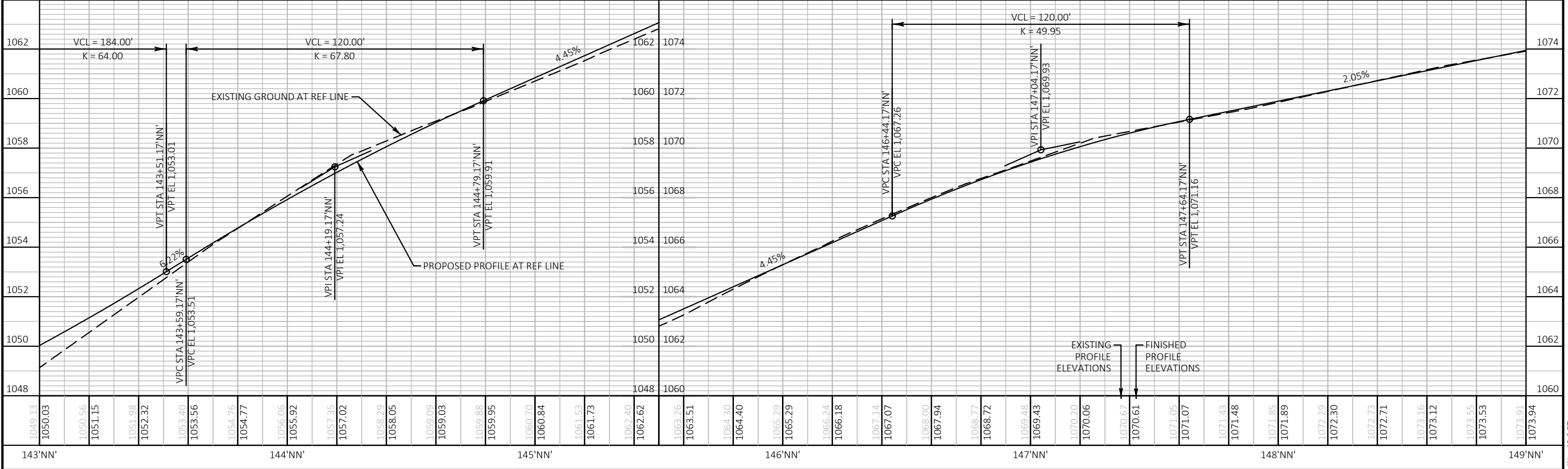
**TOWNS OF GREENFIELD & WASHINGTON  
 LACROSSE COUNTY, WISCONSIN**

**PLAN AND PROFILE**

FILE NO.  
159839

**15**  
**124**





DRAWN BY:	SEH		
DESIGNER:	SEH		
CHECKED BY:	SEH		
DESIGN TEAM		NO.	BY
			DATE
		REVISIONS	



Short Elliott Hendrickson Inc.  
 329 Jay Street, Suite 301  
 La Crosse, WI 54601-4034  
 608.782.3161 main  
 www.sehinc.com

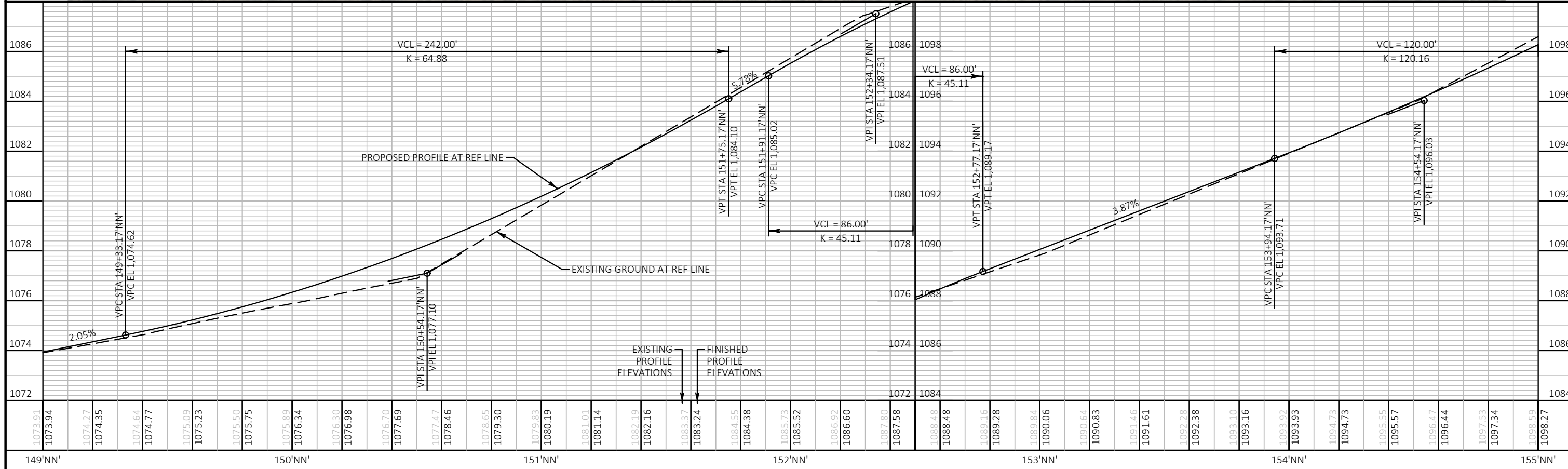
**TOWNS OF GREENFIELD & WASHINGTON  
 LACROSSE COUNTY, WISCONSIN**

**PLAN AND PROFILE**

FILE NO.  
 159839

**16**  
**124**





1073.91	1074.27	1074.35	1074.64	1074.77	1075.09	1075.23	1075.50	1075.75	1075.89	1076.34	1076.30	1076.98	1076.70	1077.69	1077.47	1078.46	1078.65	1079.30	1079.83	1080.19	1081.01	1081.14	1082.19	1082.16	1083.37	1083.24	1084.55	1084.38	1085.73	1085.52	1086.92	1086.60	1087.80	1087.58	1088.48	1088.48	1089.16	1089.28	1089.84	1090.06	1090.64	1090.83	1091.46	1091.61	1092.28	1092.38	1093.10	1093.16	1093.93	1093.93	1094.73	1094.73	1095.55	1095.57	1096.47	1096.44	1097.53	1097.34	1098.59	1098.27
149' NN'	150' NN'								151' NN'				152' NN'				153' NN'				154' NN'				155' NN'																																			

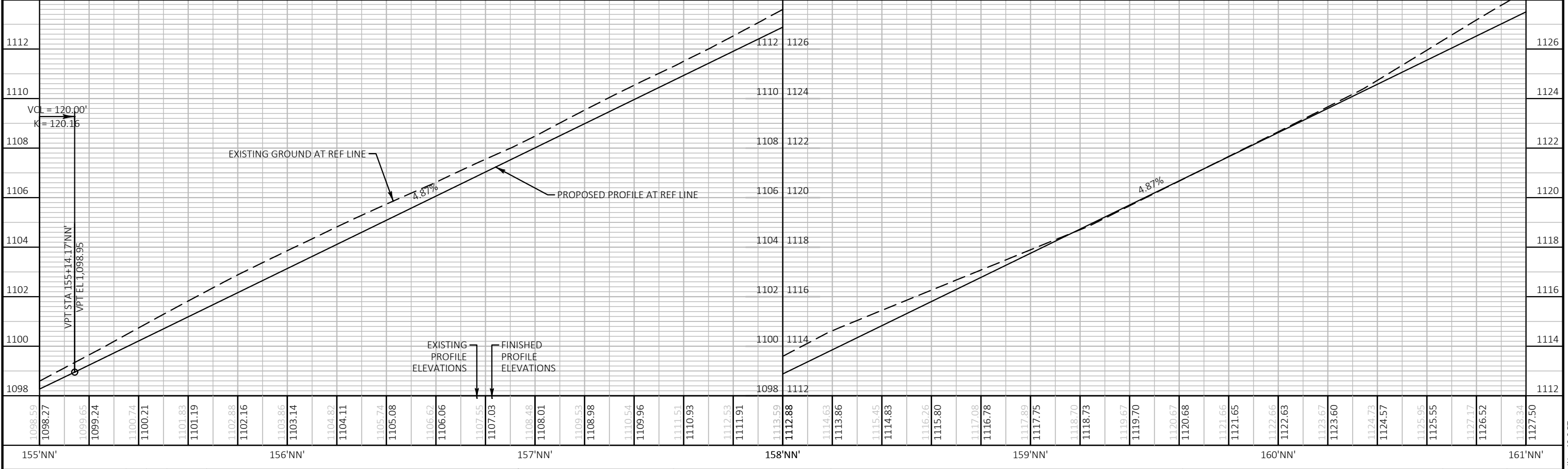
DRAWN BY:	SEH				
DESIGNER:	SEH				
CHECKED BY:	SEH				
DESIGN TEAM		NO.	BY	DATE	REVISIONS



**TOWNS OF GREENFIELD & WASHINGTON**  
**LACROSSE COUNTY, WISCONSIN**

<b>PLAN AND PROFILE</b>	FILE NO. 159839	<b>17</b>
		<b>124</b>





DRAWN BY: SEH			
DESIGNER: SEH			
CHECKED BY: SEH			
DESIGN TEAM	NO.	BY	DATE
			REVISIONS

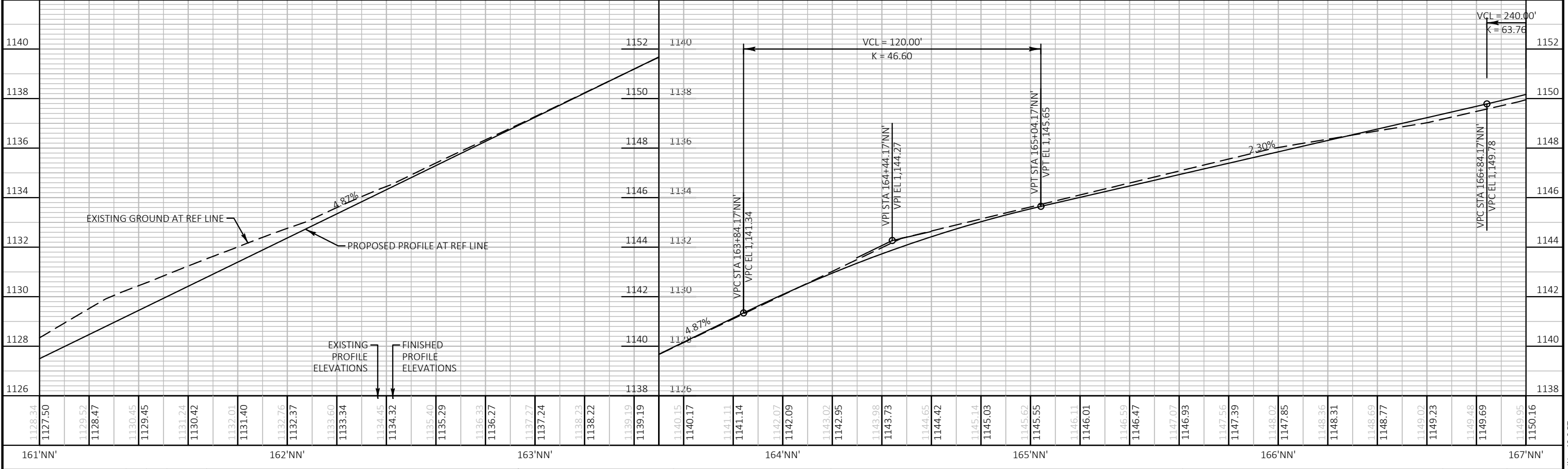
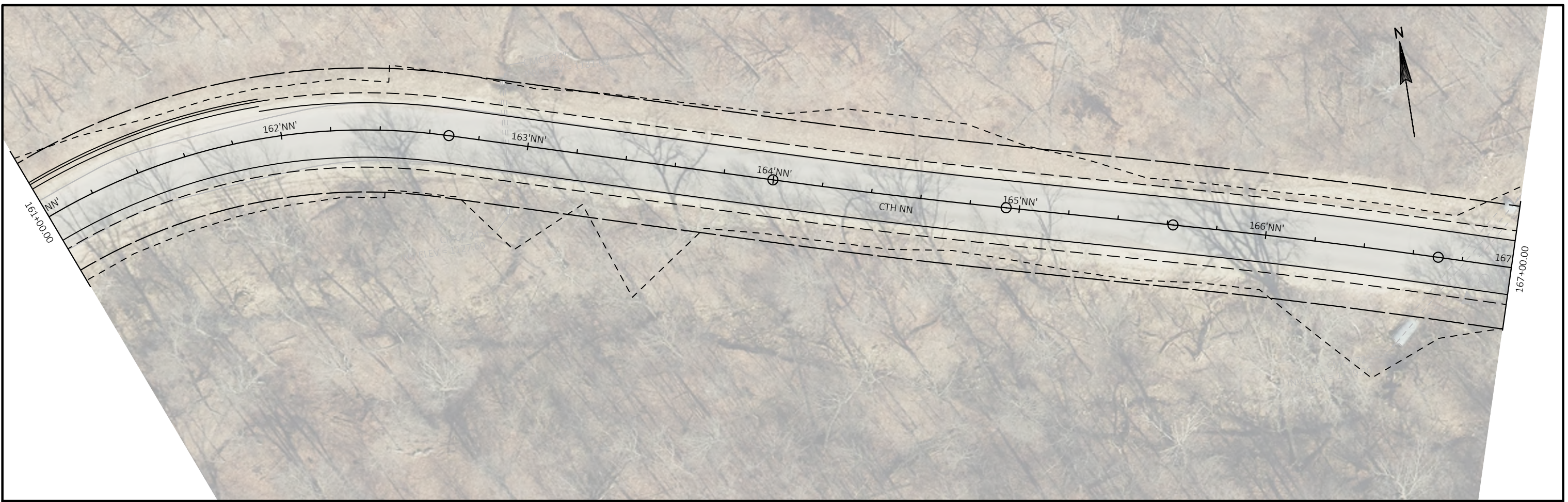


**TOWNS OF GREENFIELD & WASHINGTON  
LACROSSE COUNTY, WISCONSIN**

**PLAN AND PROFILE**

FILE NO. 159839  
**18**  
**124**





DRAWN BY: SEH			
DESIGNER: SEH			
CHECKED BY: SEH			
DESIGN TEAM	NO.	BY	DATE
	REVISIONS		



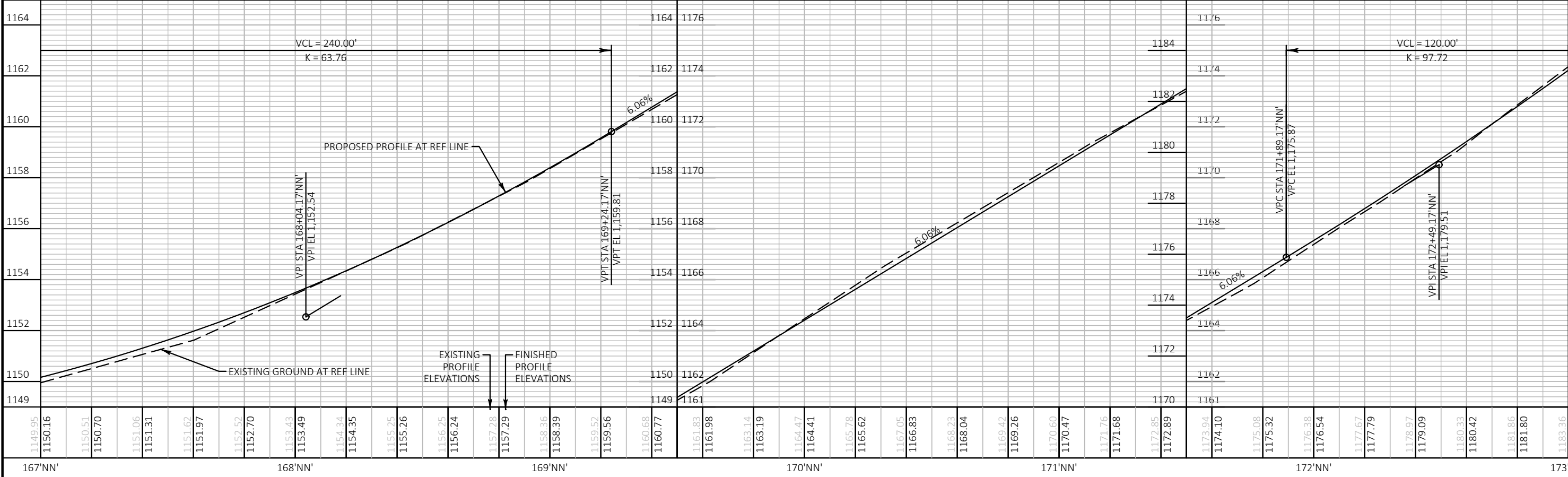
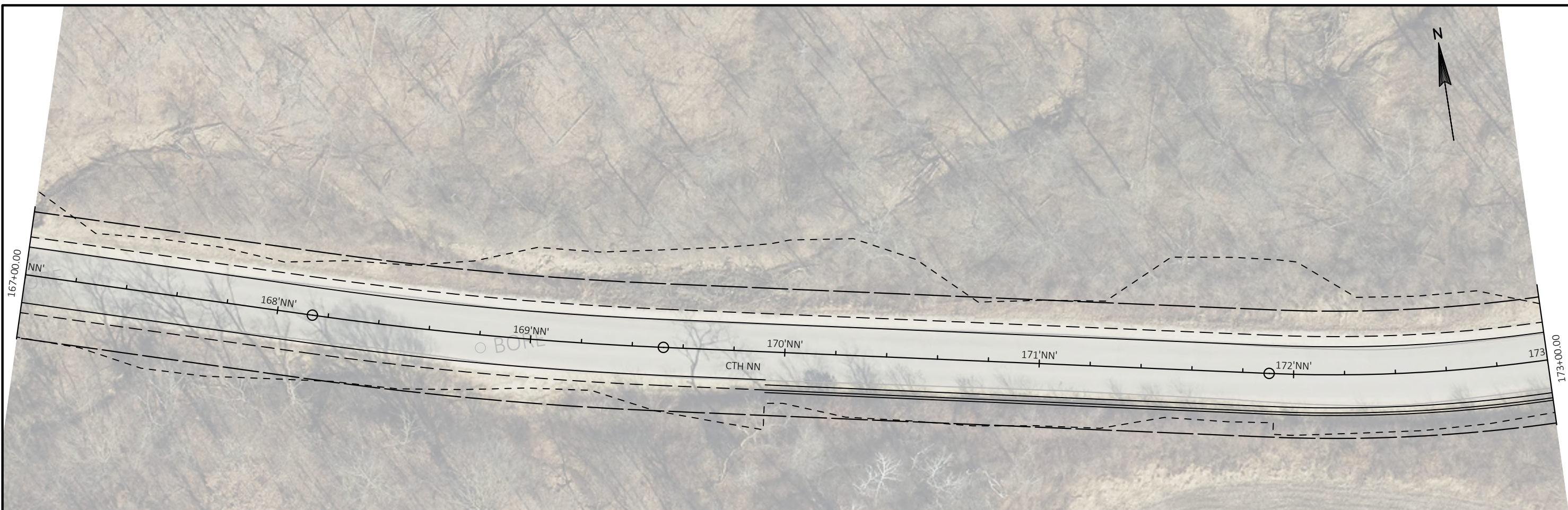
**TOWNS OF GREENFIELD & WASHINGTON  
 LACROSSE COUNTY, WISCONSIN**

**PLAN AND PROFILE**

FILE NO.  
159839

**19**  
**124**





DRAWN BY:	SEH			
DESIGNER:	SEH			
CHECKED BY:	SEH			
DESIGN TEAM				
NO.	BY	DATE	REVISIONS	



Short Elliott Hendrickson Inc.  
 329 Jay Street, Suite 301  
 La Crosse, WI 54601-4034  
 608.782.3161 main  
 www.sehinc.com

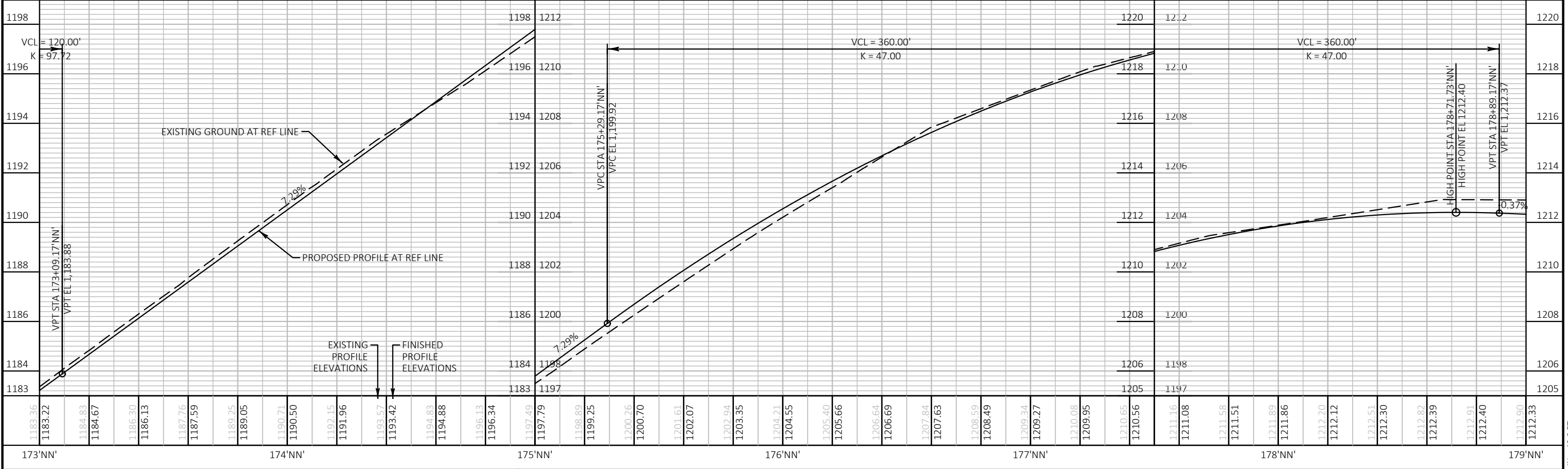
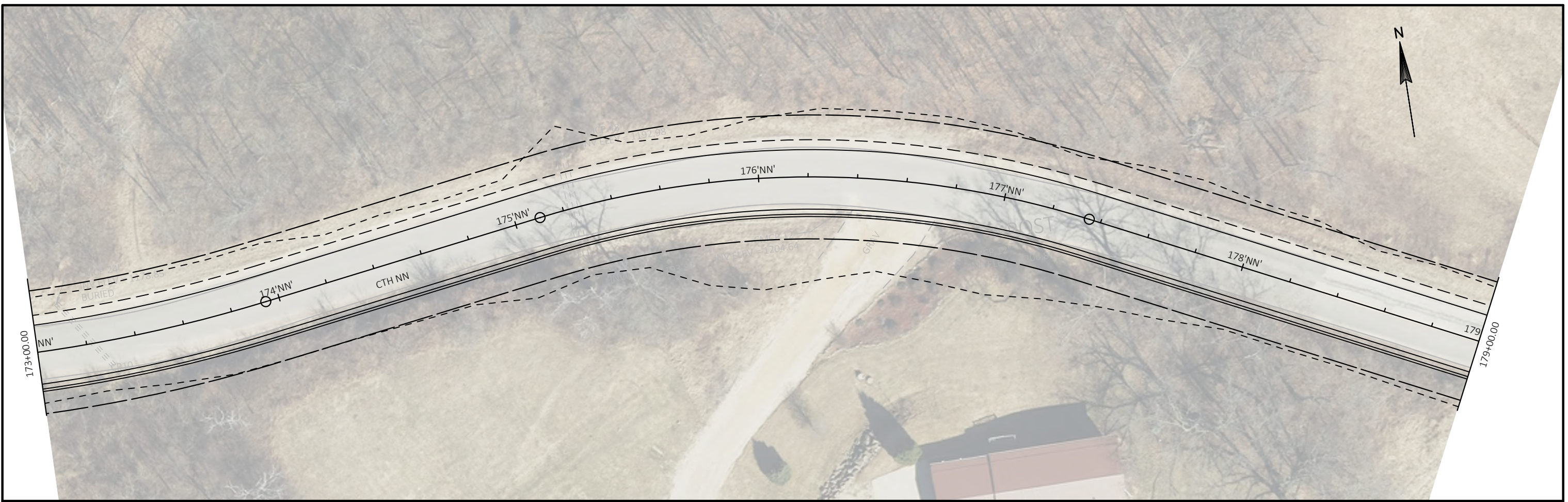
**TOWNS OF GREENFIELD & WASHINGTON  
 LACROSSE COUNTY, WISCONSIN**

**PLAN AND PROFILE**

FILE NO.  
 159839

**20**  
**124**





DESIGN TEAM	NO.	BY	DATE	REVISIONS
SEH				
SEH				
SEH				

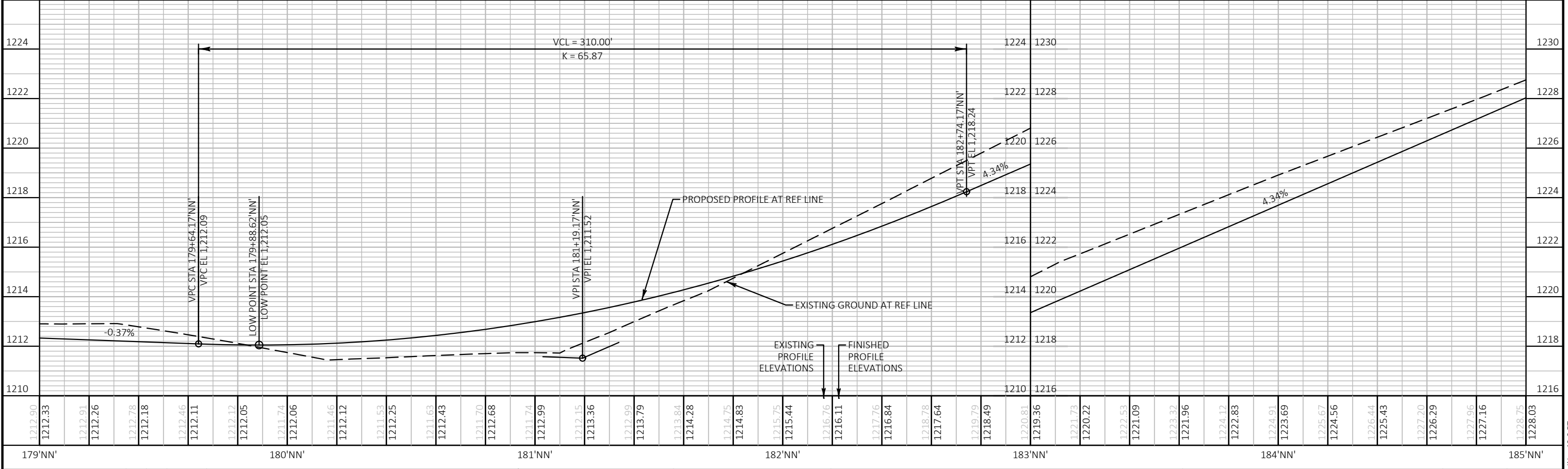
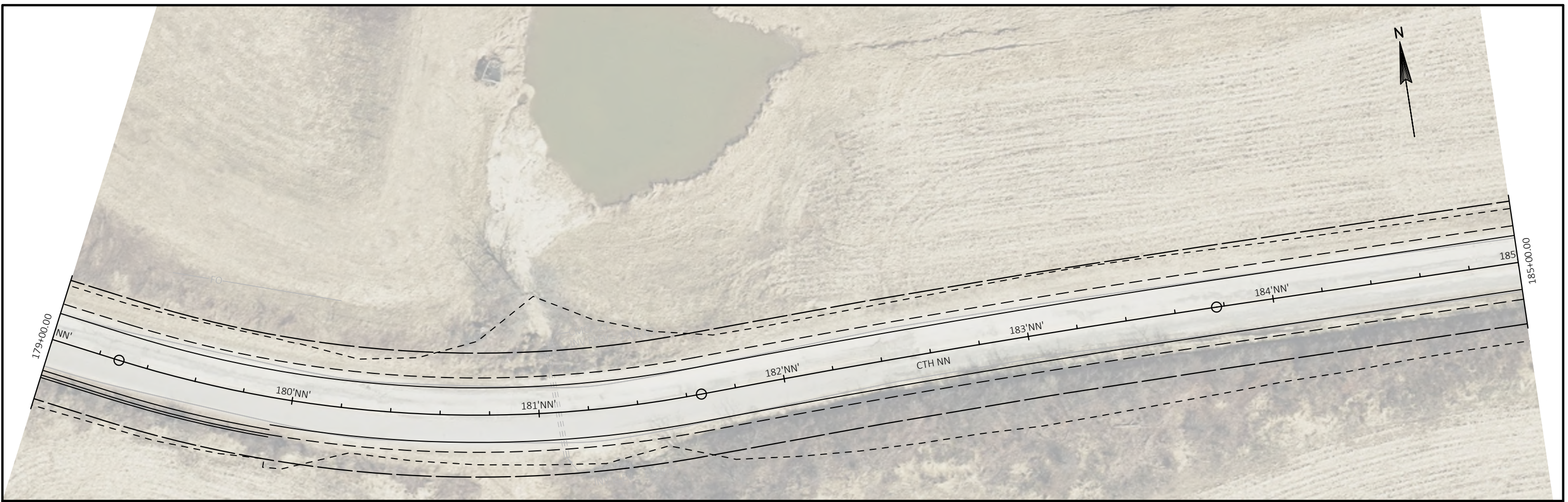


**TOWNS OF GREENFIELD & WASHINGTON  
 LACROSSE COUNTY, WISCONSIN**

**PLAN AND PROFILE**

FILE NO.  
159839  
**21**  
**124**





DESIGNED BY:	SEH			
CHECKED BY:	SEH			
DESIGN TEAM				
NO.	BY	DATE	REVISIONS	



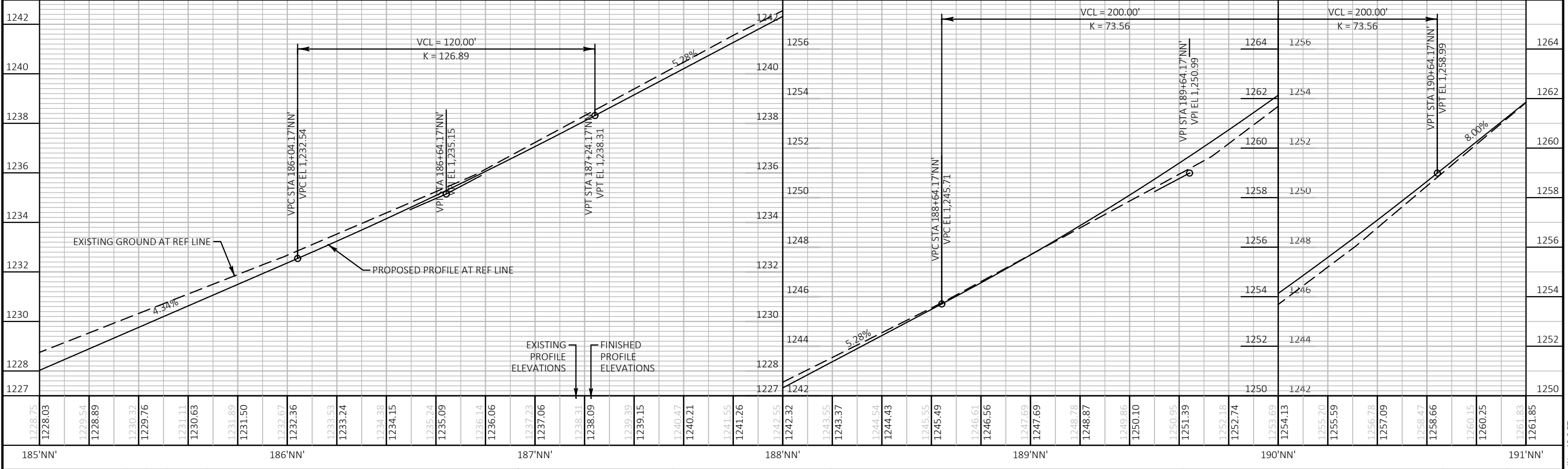
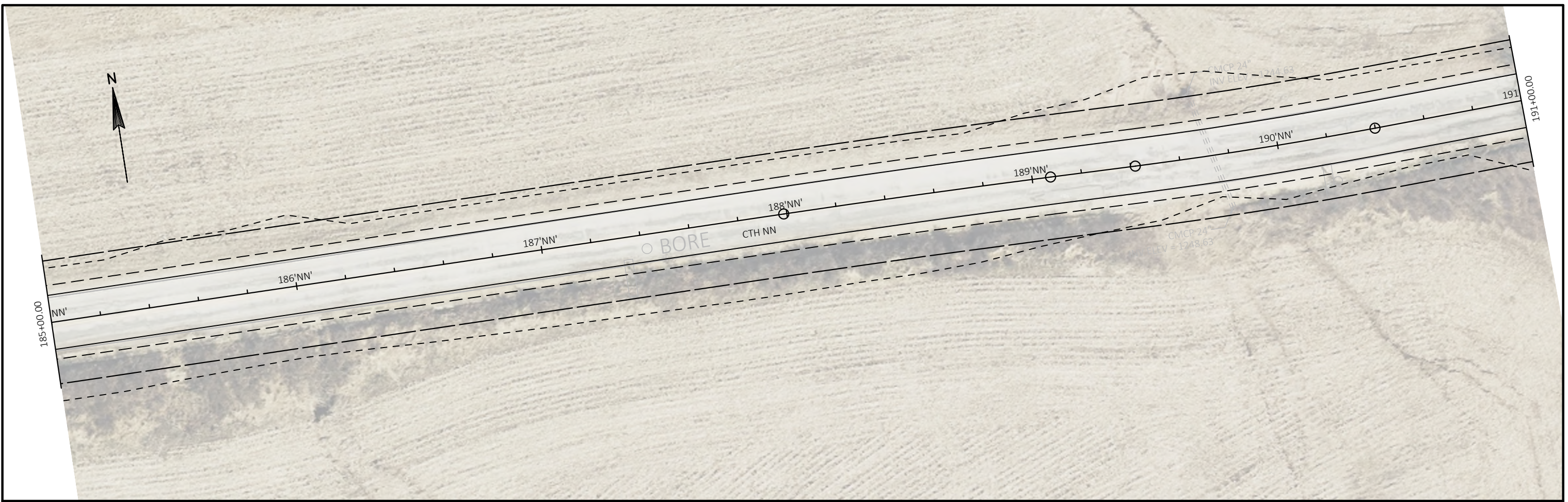
**TOWNS OF GREENFIELD & WASHINGTON  
 LACROSSE COUNTY, WISCONSIN**

**PLAN AND PROFILE**

FILE NO.  
159839

**22**  
**124**





DRAWN BY: SEH			
DESIGNER: SEH			
CHECKED BY: SEH			
DESIGN TEAM	NO.	BY	DATE
			REVISIONS



**SEH**  
 Short Elliott Hendrickson Inc.  
 329 Jay Street, Suite 301  
 La Crosse, WI 54601-4034  
 608.782.3161 main  
 www.sehinc.com

**TOWNS OF GREENFIELD & WASHINGTON  
 LACROSSE COUNTY, WISCONSIN**

**PLAN AND PROFILE**

FILE NO. 159839	<b>23</b>
	<b>124</b>



