

LA CROSSE COUNTY

OUTDOOR

RECREATION PLAN

2019-2024



Prepared by: Mississippi River Regional Planning Commission
under the guidance of the La Crosse County Planning Department,
the La Crosse County Facilities Department, and the Bluffland
Coalition

TABLE OF CONTENTS

I. INTRODUCTION.....	1
Planning Process.....	2
II. OVERVIEW OF LA CROSSE COUNTY.....	3
Physical Characteristics of La Crosse County.....	3
Social Characteristics of La Crosse County.....	4
Table 1: Population and Population Projections.....	4
Local Economy.....	4
III. GOALS AND OBJECTIVES.....	6-7
IV. DEFINITIONS, STANDARDS, AND RECREATIONAL DEMAND FOR OUTDOOR ACTIVITIES.....	8-9
Table 1: Wisconsin Resident Participation Rates of Grouped Nature-based Recreation Activities – 2016 WIDNR SCORP Survey.....	9
Table 2: Top 20 Wisconsin Resident Participation Rates of Specific Nature-based Recreation Activities – 2016 WIDNR SCORP Survey.....	10
V. INVENTORY OF OUTDOOR RECREATION FACILITIES AND AREAS.....	11
Table 3: Federal and State Recreation Facilities and Areas.....	11-13
Table 4: County Recreation Facilities and Areas.....	14
Table 5: Town/Village Recreation Facilities and Areas.....	14-18
Table 6: School Recreation Facilities and Areas.....	18
Table 7: Campground Facilities.....	19
Table 8: Golf Courses.....	20
Table 9: Other Park and Recreation Facilities and Areas.....	20
VI. OUTDOOR RECREATION ACTION PROGRAMS AND FUNDING OPTIONS.....	24-31
VII. PLAN REVIEW.....	32
VIII. CONCLUSION.....	33

APPENDIX A – Map of La Crosse County Major Federal and State Recreational Lands

APPENDIX B – Map of La Crosse County Managed Recreational Facilities and Areas
Description of La Crosse County Managed Parks and/or Campgrounds

APPENDIX C – Map of the Villages and Towns Managed Recreational Facilities and Areas

APPENDIX D – Map of the Bluffland Coalition Proposed Regional Bluffland Trail

I. INTRODUCTION: LA CROSSE COUNTY OUTDOOR RECREATION PLAN

Outdoor recreation is an integral part of the human environment. Therefore, the planning of outdoor recreation facilities and areas is of utmost importance for the development of healthy and viable communities. La Crosse County has a vast amount of open space; however, the majority of the open space is in private ownership. Often times people see these large open areas and the common perception is that the resource will never be exhausted. As time progresses and the privately owned open spaces are developed for other uses, suddenly these open spaces are gone and the community is left with a shortage of recreational resources. It is for this reason that outdoor recreation planning is important.



A view of northern La Crosse County and the Mississippi River
Valley from Grand Dad's Bluff in La Crosse

The La Crosse County Outdoor Recreation Plan is being developed and will be utilized to improve, enhance and expand the outdoor recreational opportunities available in La Crosse County. A primary reason that La Crosse County is a great place to live is because of the availability of numerous recreational facilities and areas.

The first recreation plan for La Crosse County was developed in 1970. The plan served as a guide for the recreation programs of the county and participating municipalities. The plan was also developed to insure eligibility to participate in the Land and Water Conservation Fund Program (LWCF). Subsequent outdoor recreation plans were developed in 1972, 1978, 1992, 1998, and 2006.

This plan is intended to serve as a guide to local municipalities and La Crosse County in the maintenance and development of outdoor recreation facilities in order to provide a quality outdoor recreation experience for residents and non-residents. In addition to guidance, this plan when adopted by local municipalities and La Crosse County, **makes local units of government eligible for the state's stewardship local assistance grant program known as the Knowles-Nelson Stewardship Program and the federal Land and Water Conservation (LWCF) grant program.** Both of these programs have several subcomponents for different types of projects, but eligibility for either requires that the projects for which grants are sought must be listed and supported by a local outdoor recreation plan.

It is intended that this plan be developed consistent with Wisconsin's Comprehensive Planning Law and aid La Crosse County in meeting several of the state requirements in the Agricultural, Natural, and Cultural Resources Element of the County's Comprehensive Plan. The existing La Crosse County Comprehensive Plan has been reviewed and applicable elements have been incorporated to ensure consistency.

The Village of Holmen, Village of West Salem, City of La Crosse, and City of Onalaska have not been included in this plan as those municipalities have completed individual community specific Outdoor Recreation Plans.

Authority

The La Crosse County Facilities Department and the La Crosse County Board of Supervisors requested the Mississippi River Regional Planning Commission to coordinate and prepare this Outdoor Recreation Plan. The County Planner and the Facilities Department Office Manager were the County coordinators for this project and provided invaluable

knowledge of County facilities and contact with local communities. The plan will be adopted by the County Board and each participating municipality before it becomes effective in the individual jurisdictions.

Planning Process

The planning process utilized in the development of this plan update relied on participation and input from the public, County Board Supervisors, Town, and Village officials. Public participation and input was achieved through public meetings and information requests. The following is a list of activities utilized to gain local government involvement and public participation during the planning process:

- Inventory and proposed project questionnaire sent to all Town's and the Village of Rockland and the Village of Bangor in March 2019.
- Draft plan was made available to all participating local units of government for review in March/April 2019.
- Draft plan reviewed by the Bluffland Coalition in March 2019
- Draft plan posted on the La Crosse County website in March 2019 for public review
- Draft plan was reviewed by the Public Works and Facilities Committee in April 2019

The first step in the planning process consisted of data gathering by way of collecting input on park facilities from various governmental units, review of past recreation plans and initiatives, and completing an inventory of park facilities with the assistance of County, Town, and Village officials. The collection of this information and input led to **the development of "goals and objectives" and a complete inventory of recreation facilities.** The next step in the planning process was to determine if the recreation demands of La Crosse County were being met. In part, this was accomplished by reviewing public input contained in the Wisconsin Statewide Comprehensive Outdoor Recreation Plan (SCORP) which detailed recreational demand statewide. The statewide recreational demands identified in SCORP were then coupled with information gathered from area residents and local units of government regarding future recreational needs. A list of projects was then identified to meet the future recreational needs of La Crosse County. The final step in the planning process was to prioritize the projects, develop an action program to implement the projects and identify funding sources. Another important component of recreational planning is having a good understanding of the physical and social characteristics of the planning area as they undoubtedly affect recreational demands and facilities. The following chapter of the plan provides an overview of La Crosse County.

II. OVERVIEW OF LA CROSSE COUNTY

Physical Characteristics of La Crosse County

La Crosse County is located within the state's Western Upland. This area is in the driftless area that covers southwestern Wisconsin. This area was missed by the most recent glacial advance but was dissected by the glacial melt water created 11,000 years ago by the retreating glacier. What remains are scenic ridges and valleys that make up the area now commonly referred to as the "Coulee Region".

Size and Location

La Crosse County is comprised of 307,274 acres and is 480 square miles in size. The county is 25 miles at its widest point and 25 miles at its longest point. The county is bordered on its north by Trempealeau, Jackson and Monroe counties, on the east by Monroe County, and on the south by Vernon County. The main channel of the Mississippi River and the State of Minnesota border the county to the west. La Crosse County has 6 incorporated communities and 12 towns.



A view of Lake Onalaska and the Mississippi River Bluffs

Surface Waters

The county's surface waters are one of the county's most popular environmental resources from a recreation perspective. Like most counties in the Western Upland, there are few natural inland lakes in the county. The surface waters of the Mississippi River, Black River, Lake Onalaska and Lake Neshonoc are the biggest contributors to surface water recreation. Lake Onalaska has 7,685 surface acres of water and Lake Neshonoc offers 737 surface acres of water for recreational activity. La Crosse County also has all or parts of 16 streams that are classified as trout waters. According to the Wisconsin Department of Natural Resources wetland inventory maps, within La Crosse County there are over 37,000 acres of wetlands of five acres or more in size.

Climate

La Crosse County is in the humid continental climatic zone of the Midwest which is characterized by warm summers, cold winters and moisture throughout the year. January is the coldest month of the year with an average daytime high of 26 degrees Fahrenheit while July is the warmest month of the year with an average daytime high of 84 degrees Fahrenheit. La Crosse County annually receives approximately 33 inches of precipitation and 43 inches of snowfall.

Soils

The soils of county vary by their location and proximity to the rivers in the county. The southern half of the county is primarily made up of limestone soil types and the northern part of the county consists largely of sandstone soil types. The western edge of the county along the Mississippi River is dominated by alluvium and marshland soil types.

Woodlands

The most recent forest statistics of the U.S. Department of Agriculture reported that there are 131,500 acres of forest land in La Crosse County. The native forest of the county is mostly hardwood or deciduous trees. Oak is the predominant hardwood in the area. The softwood resources of the county mainly consist of jack pine and red pine.

Social Characteristics of La Crosse County

Population

Table 1 details the population trends in La Crosse County over the last 30 years and projects the future population of the county. In 2015, La Crosse County had a population of 116,465 which is projected to grow by 5 percent and be 122,764 in 2025. The City of La Crosse is the largest city in the county with a population of 51,818. The projected growth in population will place more demands on outdoor recreation facilities and increases the need for an updated outdoor recreation plan.

Table 1. Population and Population Projections

Municipality	Census 1980	Census 1990	Census 2000	Census 2010	Projection Estimate 2020	Projection Estimate 2030	Projection Estimate 2040
T. Bangor	572	598	583	615	630	640	640
T. Barre	901	909	1,014	1,234	1,340	1,450	1,535
T. Burns	988	977	979	947	955	950	920
T. Campbell	4,118	4,490	4,410	4,314	4,395	4,400	4,315
T. Farmington	1,603	1,577	1,733	2,061	2,235	2,410	2,535
T. Greenfield	1,537	1,617	1,538	2,060	2,290	2,535	2,715
T. Hamilton	1,472	1,633	2,103	2,436	2,655	2,895	3,065
T. Holland	1,776	2,175	3,042	3,701	4,355	4,985	5,500
T. Medary	1,794	1,539	1,463	1,461	1,545	1,605	1,630
T. Onalaska	5,386	5,803	5,210	5,623	5,990	6,305	6,485
T. Shelby	5,620	5,002	4,687	4,715	4,770	4,765	4,665
T. Washington	611	598	738	558	540	515	475
V. Bangor	1,012	1,076	1,400	1,459	1,560	1,650	1,710
V. Holmen	2,411	3,236	6,200	9,005	10,560	12,120	13,400
V. Rockland	383	509	625	594	645	680	700
V. West Salem	3,276	3,611	4,738	4,799	5,225	5,565	5,790
C. La Crosse	48,347	51,140	51,818	51,320	52,550	52,700	51,850
C. Onalaska	9,249	11,414	14,839	17,736	19,860	21,950	23,570
La Crosse County	91,056	97,904	107,120	114,638	122,100	128,120	131,500
Wisconsin	4,705,642	4,891,769	5,363,715	5,686,986	6,005,080	6,375,910	6,491,635

Source: Wisconsin Dept. of Admin., 2013

Age and Ethnicity of the Population

The median age of La Crosse County residents is 35.5 years. This is compared to a median age of 39.2 years for the State of Wisconsin. 20.2 percent of the population in La Crosse County is under the age of 18, while 79.8 percent are 18 years or older and 14.9 percent of the population is over the age of 65. The age class with the largest percent of the county population is the 25 to 34 year age class with 12.7 percent of the population.

The majority of the population of the county is Caucasian (90.3%). African American residents make up 1.3 percent of the population, while residents of Asian descent comprise 4.4 percent of the county population. This is compared to the State of Wisconsin which is 81.8 percent Caucasian, 6.2 percent African American and 2.6 percent Asian. This data was gathered from the Wisconsin ACS Demographic and Housing information estimates for 2013-2017.

Local Economy

La Crosse County has a diverse economy with employment opportunities in many different industry sectors. The industry sectors with the largest percentages of employees in the county are Education and Health care sector employing 21,053, the Trade, Transportation, Utilities sector employing 14,766, and the Manufacturing sector employing 7,636. These statistics were according to the Wisconsin Department of Workforce Development, Labor Market Information, QCEW, June 2017. In 2018, the Wisconsin Department of Workforce Development reported that La Crosse County had total civilian workforce of 68,197 people with an unemployment rate of 2.2%. In 2017,

According to the U.S. Bureau of Economic Analysis (BEA), the per capita personal income (adjusted for inflation) in La Crosse County was \$45,731 compared to \$47,850 for the State of Wisconsin and \$50,392 for the United States.

III. GOALS AND OBJECTIVES

Of vital importance to the planning process is the development of goals and objectives. The goals and objectives are important because they are the tools that direct the plan. Goals, quite simply, are broad statements that the plan identifies and attempts to achieve. Objectives are the means or methods to achieve the goals. An analysis of previous La Crosse County Outdoor Recreation Plans and a review of input from local units of governments and the public the following goals and objectives have been developed to guide outdoor recreational planning in La Crosse County.

Goal 1:

Provide an orderly framework for guiding future actions (programs and facility improvement) for La Crosse County's recreation properties and programs.

Objectives:

-Develop a source document (Outdoor Recreation Plan) in which participating individual community plans can be brought together to provide a county-wide inventory of existing outdoor recreation facilities and opportunities to be utilized for future planning purposes.

Goal 2:

Maintain an outdoor recreation program that protects the natural environment and responds to the outdoor recreational needs of the residents and visitors of the county.

Objectives:

-Formulate an action plan to meet the needs and public demands for recreation facilities in the county and municipalities.
-Establish a plan review process to reevaluate goals and objectives and project plans when necessary.
-Utilize the Bluffland **Coalition's Bluffland Plan to guide property acquisition for land preservation and nature-based** recreation enhancement in the County.

Goal 3:

Maintain a program that enables the county and municipalities to continually maintain and improve their recreation programs in a way that is economically feasible.

Objectives:

-Encourage the private sector to provide certain quality services and facilities for outdoor recreation purposes. Evaluate the viability of recreation impact fees.
-Consider the impact on the local economy of the many visitors and tourists that utilize the county and municipal outdoor recreation facilities. Enhance recognition of recreational opportunities by developing marketing strategies.
-Receive maximum benefits from the various cost-sharing programs offered by the State and Federal government to provide funding for outdoor recreation facilities and services.

Goal 4:

Ensure the development of the La Crosse County outdoor recreation plan is consistent with La Crosse County's Comprehensive Plan.

Objectives:

-Review and incorporate the existing La Crosse County Comprehensive Plan outdoor recreation elements.
-Develop the county Outdoor Recreation Plan so it aids the county in meeting several of the state planning requirements with regard to the Agricultural, Natural, and Cultural Resources Element of the revised La Crosse County Comprehensive Plan.

Goal 5:

Encourage future developments /redevelopments to incorporate greenways and recreational linkages (open space corridors, trails, etc.) into their future projects.

Objectives:

- When reviewing development plans promote a connected recreational environment through planned hiking/biking trails and open spaces.
- Require that the expenses incurred for development of recreational resources shall be the responsibility of the developer.

IV. DEFINITIONS, STANDARDS AND RECREATIONAL DEMAND FOR OUTDOOR ACTIVITIES

Definitions

To assist in the interpretation and implementation of the La Crosse County Outdoor Recreation Plan the following **selected terms have been defined utilizing standards from the “Park and Recreational Designs, and Recreation Supply Levels (by Urban Peer Groups)” information included in the Appendix E of the Wisconsin Statewide Comprehensive Outdoor Recreation Plan (SCORP) 2019-2023.**

Mini Park – A play lot or playground (0.5 to 1.5 acres) providing space for parental supervised recreation of toddlers and young children within a neighborhood, or as part of a larger neighborhood or community park.

Community Park – A park usually more than 25 acres in size designed to serve several municipalities or neighborhoods and to provide many recreational opportunities for people of all ages. They may include areas suited for intense recreational facilities such as athletic complexes and large swimming pools. Community parks may be an area of natural quality for outdoor recreation, such as walking, viewing, sitting, and picnicking. They may be a combination of the above, depending on the site and community need.

Neighborhood Park – A park usually 5 to 25 acres in size, designed to serve the needs of the surrounding neighborhood.

Neighborhood Playground – A facility often provided in conjunction with a community school. It is designed to serve the needs of the surrounding neighborhood and can accommodate a variety of informal or active athletic activities.

Specialized Recreation Area – Areas restricted by design to certain uses and may not always be available for use by the public. In some cases, they may serve a very small segment of the **community's** population. Golf courses, historic sites and conservancy areas are examples of specialized recreation areas.

Open Space – Primarily land or water that is owned or managed by federal, state, or local governments, or a conservancy organization that is preserved for public use. Examples include: wetlands, woodlands, wildlife refuges, prairies/meadows, rock outcroppings, etc.

Recreation Trail – A travel way established through construction or use and is passable by the following, including but not limited to: foot traffic, bicycles, cross-country skis, off road recreation vehicles, snowmobiles, etc.

Waterway Access – An area of public access to a navigable body of water so as to provide the public the opportunity to canoe, fish, wade, ice skate, snowmobile, etc.

Wayside – Locations adjacent to a public highway that provide motorists with a convenient opportunity to stop and rest. Historical markers, restrooms, drinking water, picnic area, waste disposal are commonly found at waysides.

Recreation Standards

One accepted way to measure the adequacy of a county's park system is to determine the number of people the system serves or has the capability to serve. This is accomplished by assigning an acreage requirement for each type of recreational facility for every 1,000 people in the service area. The National Recreation and Park Association (NRPA) recommends that for every 1,000 residents, a community should provide 1 to 2 acres of neighborhood parks.

Standards obviously are dependent on the physical and cultural features of a given county. In this Outdoor Recreation Plan, one of the guidelines to be used to determine the adequacy of recreational facilities and areas is the standard of 12 acres per 1,000 people. Historically, it has been determined through the planning process that this standard is acceptable to apply in the La Crosse County Recreation Planning Process.

Recreational Demand

For guidance on the demand for recreational outdoor activities a review of the *Wisconsin Statewide Comprehensive Outdoor Recreation Plan (SCORP) 2019-2023* was conducted. SCORP is the most recent State Wide

Comprehensive Outdoor Recreation Plan 2019-2023. The SCORP plan primarily focuses on nature-based activities and trends in nature-based outdoor recreation activities. During the development of the SCORP plan numerous Wisconsin residents were questioned as to how often they participate in various recreational activities (See Tables 1 and 2). Table 1 illustrates participation rates of Wisconsin residents in nature-based recreation by activity group. The number one outdoor recreation activity by “activity group” was Hiking at 68% of Wisconsin residents participating in the activity at least once in the last 12 months. Nature observation was second at 66%, followed by Boating related activities (61%), and Bicycling (50%).

Table 1: Wisconsin resident participation rates of grouped nature-based recreation activities – 2016 WIDNR SCORP Survey	
Activity Group	% of WI residents that participated at least once in last 12 months
Hiking Hiking/walking/running on trails	68%
Nature observation Bird/wildlife watching Nature photography Gathering berries, mushrooms, etc.	66%
Boating-related Motor boating Canoeing/kayaking Personal water craft (jet-ski) Sailing Stand-up paddle boarding Waterskiing	61%
Bicycling Bicycling on roads Biking on rail-trails or other developed trails Mountain biking Fat-tire biking/snow biking	50%
Fishing Lake fishing Stream/river fishing Ice fishing	49%
Camping Tent camping RV/pop-up camping	41%
Dog-related activities Walking/running dog on trails Visiting dog park	38%
Hunting Big game hunting Turkey hunting Small game hunting Migratory bird hunting	27%
Motorized trail-based activities ATVs/UTVs on trails-routes Snowmobiling 4-WD vehicles on trails-routes Motorcycles on trails-roads	25%

Table 2 illustrates Wisconsin resident participation rates for specific (non-grouped) nature-based recreation activities. The table shows the Top 20 nature-based activities by participation rate. Hiking/walking/running on trails is the number one nature-based activity at a 68% participation rate. It is followed by Visiting a beach/beach walking (65%), Bird/wildlife watching at home (55%), Swimming in lakes/ponds/rivers (54%), and Motor boating (45%). Different methods of fishing, boating, hunting, and camping make up the majority of specific nature-based activities in the Top 20 listing of participation rates.

These state outdoor recreation survey results will assist La Crosse County in planning for nature-based activities at county public recreation facilities.

Table 2: Top 20 Wisconsin resident participation rates of specific nature-based recreation activities – 2016 WIDNR SCORP Survey	
Activity	Participation Rate
Hiking/walking/running on trails	68%
Visiting a beach/beach walking	65%
Bird/wildlife watching at home	55%
Swimming in lakes/ponds/rivers	54%
Motor boating	45%
Lake fishing from shore or a pier	40%
Bird/wildlife watching away from home	39%
Lake fishing from a boat/canoe/kayak	37%
Nature photography	37%
Bicycling on rail-trails/developed trails	34%
Canoeing or kayaking	34%
Tent camping	32%
Dog walking on trails	32%
Gathering berries, mushrooms, etc.	31%
Target firearm shooting	29%
Ice fishing	23%
Hunting big game on private land	21%
RV/pop-up camping	21%
Stream/river fishing from shore/wading	21%
Water skiing/tubing/wakeboarding	21%

The next chapter of the plan includes the inventory of outdoor recreation facilities and areas available for outdoor recreation in La Crosse County. **The inventory includes an analysis of the “Top 20 SCORP Activities”** available at each recreational site. This analysis will assist in determining if recreational demands and standards are being met in La Crosse County.

V. INVENTORY OF OUTDOOR RECREATION FACILITIES AND AREAS

As part of the planning process, an inventory of recreational facilities and areas was conducted with the assistance of local municipalities and La Crosse County staff. The various facilities and areas in La Crosse County are detailed on the following tables

Federal and State Recreation Facilities and Areas

La Crosse County is home to numerous federal and state recreational areas that provide a variety of recreational activities. Over 22,000 acres of The Upper Mississippi River Fish and Wildlife Refuge is located in La Crosse County. The refuge includes portions of the Mississippi River shoreline, the Black River Delta, and Mississippi River islands. Contained in La Crosse County are 3,201 acres of the Van Loon State Wildlife Area. Most of the state wildlife area is a wooded bottom land and an intertwining of oxbows and streams. A unique feature in the Van Loon is the Seven Bridges historical site.

La Crosse County also has many miles of biking and snowmobiling trails along with three state designated Rustic Roads for pleasure driving. The La Crosse River State Trail and Great River State Trail are the most popular biking trails and have over 27 miles of trails in La Crosse County.

In the winter months, 136.9 miles of state funded snow mobile trails are located throughout the county and numerous more miles of privately (club) maintained trails.

Table 3 lists the federal and state recreation facilities and areas located in La Crosse County. The top 20 SCORP activities available at each location have been included in the inventory. The inventory details areas ranging from waysides to wildlife refuges. A map showing the location of the various facilities and areas is contained in Appendix A.

Table 3. Federal and State Recreation Facilities and Areas

Federal & State Recreation Areas	Type	Acres	Miles	Top 20 SCORP Activities Available at Recreation Site	Facilities
Upper Mississippi River Fish and Wildlife Refuge	Open Space	22,790		Camping, fishing, hunting, hiking, walking, swimming, motor boating, canoeing/kayaking, nature photography, bird/wildlife watching, waterskiing/tubing/wakeboarding	Most of refuge land and water is "undeveloped" and intended to provide a "natural" riverine habitat - accepting the changes caused by navigation dams.
Coulee Experimental Forest	Open Space	3,109		Hiking, walking, bird/wildlife watching, nature photography, hunting	Hiking trails
La Crosse River State Trail	Trail	212.0	15.40	Hiking, biking, walking, bird/wildlife watching, nature photography	Crushed limestone fines biking and hiking trail. ADA accessible
Wis. Tourist Info. Center, Town of Campbell	Wayside	9.0		Walking, bird/wildlife watching	Restroom, tourist information, walking path, picnic tables, benches
Historical Marker – Mindoro Cut, Town of Farmington	Historical Marker	NA		None at this time	Historical Marker
La Crosse River Fishing Area, Town of Hamilton	Open Space	17.0		Fishing	Native cover, public access to river, no facilities

Federal & State Recreation Areas	Type	Acres	Miles	Top 20 SCORP Activities Available at Recreation Site	Facilities
St. Hwy. 16 Hist. Marker, Wayside, Town of Hamilton	Wayside	0.4		Bird/wildlife watching, nature photography	"Hamlin Garland " historical marker, view of Lake Neshonoc
St. Hwy. 35 Hist. Marker, Wayside, Town of Holland	Wayside	2.2		Motor boating, canoeing/kayaking	Boat landing access to Black River
Van Loon Wildlife Area	Open Space	3,570		Fishing, hunting, hiking, walking, motor boating, canoeing/kayaking, bird wildlife watching, nature photography, camping, dog walking on trails	A few walk-in canoe or small boat sites and canoe campground scattered along the waters of this refuge.
McGilvary Road	Trail	NA	2.50	Hiking, walking for pleasure, bird/wildlife watching, nature photography	Hiking trail
St. Hwy. 16 Side Path, Town of Medary	Trail	NA	3.75	Hiking, walking	A concrete walkway on the east side of STH 16. The walkway is approx. 3 mi. in length connecting the Valley View Mall area with La Crosse Street.
Black River	River	NA		Canoeing/kayaking, fishing, hunting, motor boating, nature photography, bird wildlife watching, swimming.	Canoeing, fishing. Boat access at the bridge head of STH 35 over the Black River
Lake Onalaska	Lake	7,688		Canoeing/kayaking, fishing, hunting, motor boating, swimming, nature photography, bird/wildlife watching, swimming, waterskiing/tubing/wakeboarding	Lake created in 1937 by the completion of Corps of Engineers Lock and Dam 7 on Mississippi River.
Clearwater Landing, Town of Onalaska	Waterway Access	NA		Canoeing/kayaking	Canoe and small boat landing. 4 car gravel parking lot with 300 foot long foot trail on 66 foot Town Road right-of-way to shoreline- hand carried craft-no ramp
Mosey Boat Landing, Town of Onalaska	Waterway Access	NA		Canoeing/kayaking, motor boating	Two lane paved boat ramp. Parking for 11 cars. Provides "drive-on" ice fishing access - on Rosebud fish habitat improvement area.
Adams Valley Creek, Town of Burns	Creek	NA	2.5	Fishing	Class II and III Trout Stream
Bergen Coulee Creek, Town of Washington	Creek	NA	1.4	Fishing	Class I Trout Stream
Big Creek, Town of Burns	Creek	NA	1.7	Fishing	Class III Trout Stream
Bostwick Creek, Town of Bangor	Creek	NA	12.4	Fishing	Class I, II, III Trout Stream
Bunker Hill Creek, Town of Washington	Creek	NA	0.6	Fishing	Class III Trout Stream
Burns Creek, Town of Burns	Creek	NA	10.3	Fishing	Class I and II Trout Stream
Burr Oak Creek, Town of Farmington	Creek	NA	2.0	Fishing	Class II Trout Stream
Coon Creek, Town of Washington	Creek	NA	6.0	Fishing	Classified as Class I, Three miles north of CTH H classified as Class II.
Creamery Creek, Town of Farmington	Creek	NA	3.9	Fishing	Class III Trout Stream
Davis Creek, Town of Farmington	Creek	NA	3.4	Fishing	Class II Trout Stream
Dutch Creek, Town of Bangor	Creek	NA	9.4	Fishing	Class II Trout Stream
Eggens Coulee Creek, Town of Hamilton	Creek	NA	1.4	Fishing	Class II Trout Stream
Fish Creek, Town of Bangor	Creek	NA	5.2	Fishing	Class III Trout Stream
Fishback Creek, Town of Greenfield	Creek	NA	1.5	Fishing	Class II and III Trout Stream
Gills Coulee Creek, Town of Hamilton	Creek	NA	3.2	Fishing	Class II and III Trout Stream
Halfway Creek, Town of Onalaska	Creek	NA	6.0	Fishing	Class II and III Trout Stream
Hoyer Coulee Creek, Town of Hamilton	Creek	NA	1.8	Fishing	Class I Trout Stream

Federal & State Recreation Areas	Type	Acres	Miles	Top 20 SCORP Activities Available at Recreation Site	Facilities
Johns Coulee Creek, Town of Greenfield	Creek	NA	1.8	Fishing	Class I Trout Stream
Jostad Coulee Creek, Town of Onalaska	Creek	NA	2.2	Fishing	Class III Trout Stream
La Crosse River, Town of Burns	River	NA	0.5	Fishing	Class II Trout Stream
Larson Coulee Creek, Town of Hamilton	Creek	NA	3.4	Fishing	Class I and II Trout Stream
Little Burns Creek, Town of Burns	Creek	NA	1.3	Fishing	Class I Trout Stream
McKinley Valley Creek, Town of Hamilton	Creek	NA	2.8	Fishing	Class II and III Trout Stream
Mormon Coulee Creek, Town of Shelby and Greenfield	Creek	NA	14.6	Fishing	Class II Trout Stream
Neshonoc Creek, Town of Hamilton	Creek	NA	4.8	Fishing	Class II and III Trout Stream
Poplar Creek, Town of Washington	Creek	NA	0.9	Fishing	Class I Trout Stream
Sand Creek, Town of Burns	Creek	NA	2.5	Fishing	Class I Trout Stream
Smith Valley Creek, Town of Medary	Creek	NA	1.0	Fishing	Class III Trout Stream
Great River State Trail	Trail	161.0	13.80	Hiking, biking, walking, bird/wildlife watching	Hiking and biking trail
Lytles Landing, Town of Onalaska	Waterway Access	0.5		Canoeing/kayaking	Launch site for canoes and hand carried craft, vault toilet, parking lot, hand water pump
Brice Prairie Walkdown, Town of Onalaska	Waterway Access	0.5		Bird/wildlife watching, fishing, nature photography	Walk in access, roadside parking along County ZB
Coon Creek Fishery Area & Easement	Open Space	126.0		Fishing, hunting, hiking	Trout stream, hunting, fishing, hiking
North Bend Bottoms Wildlife Area	Open Space	32.0		Hunting, hiking, walking	Hunting, hiking
Larson Coulee Trout Fishing Easement	Open Space	48.0	3.4	Fishing	Fishing access, no facilities.
Wayside Park U.S. 14/61, Town of Greenfield	Wayside	5.0		Bird/wildlife watching	1 restroom facility, picnic area
Bishop View Wayside, Town of Greenfield	Wayside	5.0		Bird/wildlife watching	"Coulee Region" historic plaque. 14 car parking capacity - picnic tables and grill. No water or toilets.
Interstate 90 Rest Area/Historic Marker	Wayside	26.0		Bird/wildlife watching	Restrooms, picnic tables
Great River Road	Scenic Highway	NA		Nature photography, bird/wildlife watching, hiking, biking, walking	Scenic overlooks along roadway
La Crosse River Marsh, Town of Medary	Open Space	1,280-1,920		Hiking, walking, nature photography, bird/wildlife watching	Walking trails, and bike trails are present within or near it. Hunting, fishing, and trapping allowed in some locations. Most of the marsh area within the Town is in private ownership.

County Recreation Facilities and Areas

Table 4 is an inventory of all county recreation facilities and areas. The top 20 SCORP activities available at each location have been included in the inventory. Located in Appendix B is a map and a complete description of each of the La Crosse County Parks.

Table 4. County Recreation Facilities and Areas

County Recreation Areas	Type	Acres	Top 20 SCORP Activities Available at Recreation Site	Facilities
County Forest Preserve – Town of Burns	Open Space	70.0	Hunting, hiking, walking, nature photography, bird/wildlife watching	Forest Preserve
Lake Onalaska East Shoreline Access	Waterway Access	1.0	Fishing	Fishing access
Mindoro County Park	Community Park	114.0	Hiking, walking, nature photography, bird/wildlife watching	Combination of Wildlife Habitat, Nature Study Retreat, and Traditional Park. Equipped with ball diamond, electrical service, well, playground equipment, pit toilets, and picnic areas with grills.
Hoeth Forest	Open Space	439.0	Hiking, hunting, fishing, walking, nature photography, bird/wildlife watching	Combination of Wildlife Habitat and Nature Study Retreat. No other developed park equipment.
County Forest Preserve – Bice Forest in the Town of Farmington	Open Space	462.0	Hiking, hunting, walking, nature photography, bird/wildlife watching	10 miles of hiking trails and old logging trails. No other developed park equipment.
Lake Neshonoc South County Park	Community Park	60.0	Fishing, hiking, walking, swimming, motor boating, canoeing/kayaking, nature photography, bird/wildlife watching, waterskiing/tubing/wakeboarding	1/2 mile of lake shoreline access road, parking area, boat ramp, picnic tables, portable toilet, and handicapped fishing pier.
Neshonoc Swarthout County Park	Community Park	20.0	Motor boating, fishing, hiking, walking, motor boating, canoeing/kayaking, nature photography, bird/wildlife watching,	Picnic shelter and tables, playground, boat launch ramp, open play area, dam
Goose Island County Park and Campground	Community Park	771.0	Camping, fishing, hiking, walking, swimming, motor boating, beach visiting, canoeing/kayaking, nature photography, bird/wildlife watching, dog walking on trails, biking	350 campsites, boat ramps, canoe and kayak rental, hiking trails, 5 picnic shelters, play grounds, volleyball, canoe/kayak trail, picnic area with grills, mini-golf, beach, dump station, basketball court, shower, toilets, laundry, store and game room, horse shoe pit
Veterans Memorial County Park and Campground	Community Park	232.0	Camping, fishing, hiking, walking, swimming, canoeing/kayaking, nature photography, bird/wildlife watching, dog walking on trails, biking	4 picnic shelters, tables and grills, playgrounds, ball diamonds, batting cage, dugouts, volleyball, 120 site campground, canoe access to La Crosse River, hiking, camp store, stocked fishing pond, basketball, toilets, showers dump station, shuffle board, horse shoe pits -bike trail access to La Crosse River State Trail

Town/Village Recreation Facilities and Areas

Town and Village recreation facilities and areas offer county residents additional recreational outlets. Over 50 town/village community or neighborhood parks are located throughout La Crosse County. The Top 20 SCORP activities available at each location have been included. Table 5 is a listing of the town and village recreation facilities and areas in La Crosse County. Located in Appendix C is a map detailing villages and towns with recreation facilities and the location of the facilities.

Table 5. Town/Village Recreation Facilities and Areas

Town/Village Recreation Areas	Type	Acres	Top 20 SCORP Activities Available at Recreation Site	Facilities
Town of Bangor	No Town Facilities	NA	NA	NA
Town of Barre	No Town Facilities	NA	NA	NA

Town/Village Recreation Areas	Type	Acres	Top 20 SCORP Activities Available at Recreation Site	Facilities
-Barre Park	Neighborhood Park	10.0	hiking, walking, nature photography, bird/wildlife watching	Playground apparatus, picnic tables, shelter house
Town of Burns	No Town Facilities	NA	NA	NA
Town of Campbell				
-Lieder Park	Neighborhood Park	1.8	None at this time	Open play area, playground apparatus
-Breezy Point Rd.	Neighborhood Park	0.5	None at this time	Playground apparatus, picnic tables, basketball, one portable restroom
-Plainview Park	Neighborhood Park	0.96	None at this time	Basketball surface & standard, picnic tables, portable toilets
-Dauphin (Hauser-Zimmerman)	Community Park	2.75	None at this time	Baseball field with backstop & fence, batting cage, picnic tables, pavilion, playground apparatus, play area, open and closed shelter, 1 portable restroom
-Baumgartner Park	Neighborhood Park	0.25	None at this time	Playground apparatus
-Western Ave. Park	Neighborhood Park	0.25	None at this time	Playground apparatus
-Callaway Ball Field	Neighborhood Park	2.0	None at this time	Major ball diamond used for tournament play, portable restroom
-2 nd Ave. East	Neighborhood Park	0.25	None at this time	Playground apparatus
-Sky Harbour	Neighborhood Park		None at this time	Large field with ball diamond backstop, one portable restroom
-Church Drive (Jolivette)	Neighborhood Park	1.5	None at this time	Volleyball court, basketball paving & stand, new playground apparatus, picnic tables, two tennis courts, 1 shelter, pavilion, one portable restroom
-Copus Court Park	Open space	0.4	None at this time	Open space with non-regulation size ball field with backstop, portable restroom
-Eagles Nest Park	Neighborhood Park	3.0	None at this time	Playground apparatus, ball field backstop, fence, and team benches, one portable restroom.
-Frog Pond	Waterway Access	6.0	Fishing, hiking, walking, nature photography, bird/wildlife watching	Fishing and wildlife observation area
-Norm Wardwell Memorial Park	Neighborhood Park	.77	None at this time	Basketball court, new playground apparatus, tennis court, one portable restroom, park bench
-Richmond Bay Landing	Waterway Access	NA	Motor boating	Boat ramp with access to Richmond Slough
-Richmond Park	Neighborhood Park	.62	None at this time	Volleyball court, picnic tables, and playground equipment
-Upper & Lower Dike Access	Waterway Access	NA	Motor boating	Two boat ramps, paved parking lot by lower landing and boat dock, one portable restroom
-Nelson Park	Community Park (Owned by Corps of Engineers maintained by Town)	6	Fishing, nature/wildlife watching, nature photography	Picnic tables with three shelters, portable toilets, swings, boat ramp, pavilion, wildlife viewing platform, shoreland access to Lake Onalaska
-1400 Nakomis	Open Space	NA	None at this time	Dedicated as park site
Town of Farmington				
-Ball Field and playground (formerly school playground)	Neighborhood Park	6.5	None at this time	Lighted ball field, bleachers , announcer's booth , concession stand, scoreboard, playground equipment, WWI Memorial
-Old Brown Valley School	Neighborhood Park	1.0	Bird and wildlife watching	Two pit toilets, playground equipment, water, recreation center
-Mindoro Lions Park	Neighborhood Park	5.2	None at this time	Horse/tractor pull track
Town of Greenfield				
-Town of Greenfield Park	Community Park	6.4	None at this time	Lighted softball field with bleachers, shelter house with picnic facilities, children's play area

Town/Village Recreation Areas	Type	Acres	Top 20 SCORP Activities Available at Recreation Site	Facilities
				and municipal water and sewer system, 50 x50 concrete basketball court, two restrooms.
Town of Hamilton	No Town Facilities	NA	NA	NA
Town of Holland				
-Country Estates Park	Neighborhood Park	3.0	None at this time	Softball diamond, playground equipment, picnic tables, one shelter
-Gaynor's Rolling Hills Addition Park	Neighborhood Park	2.0	None at this time	Softball diamond, volleyball court, play equipment
-Holland Town Park	Community Park	25.0	Hiking, walking, nature photography, bird/wildlife watching	2 ball diamonds, 2 volleyball courts, full sized basketball court, 4 horseshoe pits, sledding hill one restroom, three shelters playground equipment, Town hall building, shops
-Holland Estates Park	Neighborhood Park	4.6	None at this time	Shelter, play equipment
August Prairie Park	Neighborhood Park	2.4	None at this time	Basketball court, play equipment
George Hammes Memorial Park	Neighborhood Park	6.4	Walking	Walking trail, shelter, play equipment
Wildflower Park	Neighborhood Park	1.2	Walking, hiking	Parking lot, open space
Town of Medary				
-Wolfridge	Open space	13.0	None at this time	Wooded open space
-Green Hills	Open space	1.0	None at this time	Wooded open space
-Meadowood	Open space	8.0	None at this time	Wooded open space
-Town Hall Park	Neighborhood Park	2.0	None at this time	Playground apparatus and ball field
Town of Onalaska				
-Homestead Park	Neighborhood Park	1.0	None at this time	Playground apparatus, picnic tables
-First Prairie Park	Neighborhood Park	2.32	None at this time	Ball field with backstop, playground apparatus, picnic tables.
-Roth Field	Neighborhood Park	3.5	None at this time	Ball field with two sets of bleachers and dugouts, half-court basketball, playground apparatus, one open shelter, and one concession stand
-Brice Prairie Swarhout Park	Community Park	9.0	None at this time	Large picnic shelter, tennis court, volleyball court, playground apparatus
-Mulder Field	Neighborhood Park	1.25	None at this time	Ball field with backstop, bleachers, and outfield fence; playground apparatus; picnic tables, one shelter
-Prairie Heights	Neighborhood Park	1.2	None at this time	Ball field with backstop, playground apparatus, picnic tables
-Meadow Estates	Neighborhood Park	0.75	None at this time	Playground apparatus, picnic tables
-Town Hall	Neighborhood Park	NA	None at this time	Limited play apparatus
-Terrace Heights	Neighborhood Park	1.0	None at this time	Playground apparatus and two picnic tables.
-Strawberry Commons	Neighborhood Park	3.52	None at this time	Ball field with backstop, playground apparatus, basketball court, picnic tables
-Heritage Hills	Neighborhood Park	1.7	None at this time	Tennis court, playground apparatus, picnic tables, basketball court
-Sandy Knolls	Neighborhood Park	2.91	None at this time	Ball field with backstop, playground apparatus, picnic tables
-Thunderbird Hills	Neighborhood Park	1.92	None at this time	Volleyball area, playground apparatus, one shelter, picnic tables
-Apple Valley	Neighborhood Park	3.3	None at this time	Two open sided shelters, hand water pump, tennis court, playground apparatus, ball field, picnic tables
-Sobkowiak Park	Neighborhood Park	1.5	None at this time	Playground apparatus, picnic tables, basketball court
-Sun Valley Park	Neighborhood Park	2.52	None at this time	Playground equipment, picnic tables
-Mesa Grande Park	Neighborhood Park	3.01	None at this time	Playground equipment, picnic tables
-Schaller Lake Park	Neighborhood Park	.98	None at this time	Playground equipment, picnic tables

Town/Village Recreation Areas	Type	Acres	Top 20 SCORP Activities Available at Recreation Site	Facilities
-Marvin Gardens Park	Neighborhood Park	2.79	None at this time	Shelter, playground equipment
-Fisherman's Walk Down	Waterway Access	NA	Fishing, biking	An 80 car paved parking lot and "steep" flight of wooden stairs to waters edge. Walk down pedestrian access to shoreline. Access to bike trail.
-Homestead Landing	Waterway Access	NA	Canoeing/kayaking	Walk-in canoe access. On-street vehicle parking with foot trail access via Town right-of-way to waterline. No facilities on site. Town maintained cross over culvert tube
-Upper Brice Prairie Landing	Waterway Access	1.5	Fishing, motor boating	Two lane paved boat ramp. A 50 car paved parking lot; two double stall vault toilets; courtesy dock - sufficient shoreline for bank fishing access; picnic area.
-Brice Prairie Shoreline & Dike	Trail	NA	Fishing	Public pedestrian access along shoreline of Lake Onalaska
Town of Shelby				
-Arbor Hills - Developed	Neighborhood Park	2.15	None at this time	Tennis courts, slide and swings, children's merry-go-round, seasonal ice rink
-Arbor Hills - Wooded hillside	Open Space	20.0	None at this time	Wooded hillside adjacent to city owned forested area.
-Brookwood	Neighborhood Park	2.15	None at this time	Horseshoe pits, playground apparatus
-Pammel Creek Park	Community Park	18.0	Hiking, walking, nature photography, bird/wildlife watching	Two ball fields, walking trails, in process of being developed.
-Forest Hills	Open Space	1.32	None at this time	Very steep-wooded hillside no parking provisions on streets.
-Hills of Home	Neighborhood Park	0.15	None at this time	Slide and swing set
-Mormon Coulee	Community Park	18.0	Hiking, walking, nature photography, bird/wildlife watching	Four picnic shelters, one with enclosed sides and two open, tennis courts, volleyball court, horseshoe courts, playground apparatus, well water and septic drain field, 3 toilet facilities.
-River Hills	Neighborhood Park	0.42	None at this time	Playground apparatus and basketball standard.
-Scenic Addition	Open Space	9.11	None at this time	Wooded hillside - underground reservoir serves Wedgewood Valley residents - public access to this site is not clearly defined.
-Shelby Field	Community Park	12.5	None at this time	Three youth baseball fields with backstops, fencing, and bleachers on east side of 33rd Street and off-street parking lot on west side of street. One shelter and one restroom
-Skyline	Open Space	4.29	None at this time	Playground apparatus and basketball standard. Property is linear open space with power line running overhead.
-Smyth	Neighborhood Park	1.63	None at this time	Non-regulation softball field with backstop, playground apparatus, seasonal ice rink.
-Wedgewood Terrace	Neighborhood Park	0.77	None at this time	Playground apparatus, basketball court, tennis court.
-Wedgewood Terrace First Addition	Neighborhood Park	0.75	None at this time	Limited play apparatus. Several trees shade the area.
-Wedgewood Valley	Neighborhood Park	1.3	None at this time	Limited play apparatus
-Nolop Addition	Neighborhood Park	0.26	None at this time	Playground apparatus
-Boulder Ridge Park	Neighborhood Park	1.03	None at this time	Swings, play apparatus
-No name at this time	NA	NA	None at this time	Intersection of Bredel Coulee and Ridgewood Lane. No facilities at this time
-Pammel Creek Walkway	Trail	NA	Hiking, walking	Walkway and open space
Town of Washington				
-Ridge History Park	Neighborhood Park	NA	None at this time	Park, school house, educational museum and meeting room

Town/Village Recreation Areas	Type	Acres	Top 20 SCORP Activities Available at Recreation Site	Facilities
Village of Rockland				
-Gaylord Park	Community Park	14	Hiking, walking	Restrooms, soccer fields, softball fields, basketball court, playground, volleyball court
-Village Hall Park	Neighborhood Park	2	None at this time	Portable Restroom, shelter, basketball, volleyball, softball
Village of Bangor				
-Bangor Veterans Memorial Park	Community Park	18.85	Hiking, walking, nature photography, bird/wildlife watching, fishing	3 shelter houses, 2 restrooms, baseball field, horse shoe court, picnic area with tables

School Recreation Facilities and Areas

The public schools, private schools, universities and colleges within La Crosse County provide additional recreational facilities (neighborhood playgrounds) offering many traditional recreational opportunities, See Table 6. The schools in the county provide 52 recreational sites containing over 575 acres of recreational facilities. The sites are mainly baseball and softball fields, football and soccer fields, tracks, tennis and basketball courts.

Table 6. School Recreation Facilities and Areas

School Recreation Areas	Location	Number of Parks or Areas	Acres
Bangor	V. of Bangor	1	15.0
Holmen	V. of Holmen	6	163.0
La Crosse	C. of La Crosse	17	126.0
Onalaska	C. of Onalaska	8	112.0
West Salem	V. of West Salem	1	32.0
Coulee Region Christian	V. of West Salem	1	5.0
Aquinas	C. of La Crosse	1	3.0
Blessed Sacrament	C. of La Crosse	1	1.0
Cathedral	C. of La Crosse	1	1.5
Summit Elementary School	T. of Campbell	1	1.0
St. Patrick's	C. of Onalaska	1	0.5
Mount Calvary-Grace Lutheran	C. of La Crosse	1	1.5
Immanuel Lutheran	C. of La Crosse	1	0.5
St. Paul's	T. of Onalaska	1	1.0
Luther High School	T. of Onalaska	1	6.0
Faith Baptist	C. of La Crosse	1	1.0
First Evangelical Lutheran	C. of La Crosse	1	1.0
Christ St. John's Lutheran	V. of West Salem	1	1.0
UW-La Crosse	C. of La Crosse	3	84.0
Viterbo University	C. of La Crosse	2	20.0
Western Wisconsin Technical College	C. of La Crosse	1	2.0

Campground Facilities

La Crosse County has a variety of campground facilities with eight private and public campgrounds, See Table 7. There are over 1,150 camping sites within the county. The camping parks available to the general public consist of 1,277 acres. La Crosse County maintains and operates two of the campgrounds. The campgrounds are located throughout the county and provide residents and visitors with excellent opportunities to enjoy the natural resources of the county. The campgrounds that are public county parks were previously listed in Table 4.



Camping at Veteran's Memorial Park

Table 7. Campground Facilities

Campgrounds	Number of Sites	Acres	Public/Private	Facilities
Goose Island County Park and Campground	350	771.0	Public	See County Recreation Facilities and Areas, Table 4
Neshonoc Lake Side Campground	258	49.0	Private	Playground, pool, beach, rec. hall, laundry, restrooms, showers, dump station, volleyball, basketball, dock, boat landing
Whispering Pines Campground	75	39.0	Private	Electricity hook-up, camp store and concession area.
Bluebird Springs Recreation Area	120	209.0	Private	X-country skiing, hiking, playground apparatus, basketball court, volleyball court, recreation hall, store, snack bar, drink bar. Showers, toilets, laundry, dump station, spring fed swimming pond, two fishing ponds, picnic shelter.
Veterans Memorial County Park and Campground	120	230.0	Public	See County Recreation Facilities and Areas, Table 4
Pettibone Resort	25 tent sites 183 RV sites	40.0	Private – Land owned by City of La Crosse and leased for campground	Fishing, boat landing, camp store, bar, basketball, horse shoes, playground, electric, game room, shelter house, banquet hall
Camp Ehawee, Girl Scout Camp	Not available for the general public - camping for girl scouts and other specified groups	214.0	Private	Camp equipped with: 2 lodges (bunkhouse, kitchen, showers, fireplace), swimming pool, amphitheater, canoe landing with access to Black River, hiking trails, dining hall, mini-store, ball diamond and recreation field, 4(+) camping areas with fire pits and wooden platforms for tents
Gateway Council Boy Scout Camp	Not available for the general public - camping for boy scouts and other specified groups	330.0	Private	Hiking trails, canoe landing, group campgrounds. Selected camp buildings i.e. cafeteria, bathroom facilities.

Specialized Recreation Areas

La Crosse County also has Specialized Recreation Areas, See Table 8 and Table 9. These areas consist of golf courses, rod and gun clubs, fair grounds, a ski resort, heritage and nature centers. Five public golf courses one semi private golf course and one private golf course are located in the county. Combined the courses offer 108 golf holes located on 763 acres.

Table 8. Golf Courses

Golf Courses	Yards	Par	Acres	Public/Private
Fox Hollow – 18 holes	5,593	70	109.0	Public
Drugan's Castle Mound – 18 holes	6,150	72	96.0	Public
La Crosse Country Club – 18 holes	7,180	72	103.0	Private
Coulee Golf Bowl – 9 holes	3,060	36	50.0	Public
Cedar Creek – 18 holes	6,751	71	200.0	Semi-Private
Forest Hills – 18 holes	6,000	71	160.0	Public
Walsh's – 9 holes	2,145	32	45.0	Public

Table 9. Other Park and Recreation Facilities and Areas

Other Park and Recreation Facilities and Areas	Location	Acres	Facilities
West Salem Rod and Gun Club	T. of Burns	128.0	
Coulee Archers	T. of Farnington	40.0	Archery Range, club house, meeting room
Mindoro Lions Club Park	T. of Farnington	NA	Tractor pull track, restrooms, bleachers, picnic tables, shelter house, kitchen
Gunslick Trap Club	T. of Holland	42.0	Clay Pigeon Shooting Available, meeting room
Holmen Rod and Gun Club	T. of Holland	75.0	Shooting range for archery, pistol and rifle. Lodge by shooting range
La Crosse Interstate Fairgrounds	T. of Hamilton	114.0	Paved race track, animal barns, show arena
Alpine Ski Area –Mt. La Crosse	T. of Shelby	200.0	18 slopes and ski trails, 516' vertical drop, 5,300 foot run – Wisconsin's longest, chalet, ski shop, 3 chair lifts
Norskedalen Heritage Center	T. of Washington	400.0	Museum, 2 restroom facilities, meeting room, pond, hiking and cross country skiing trails
Stry Foundation Nature Center and Conserv.	C. of La Crosse	5.0	Restroom facility, pond, hiking trails
Stry Foundation Conservancy Site	C. of La Crosse	5.0	Trails
Native Prairie	T. of Holland	80.0	Native prairie land. Last remaining native prairie on a sandy terrace is located here. Site has statewide significance.
Natural Prairie	T. of Holland	350.0	Natural prairie. Grassy prairie where 22 separate bird species have been reported, seven of which are of special concern to the State because of their scarcity.

Adequacy of Existing Recreation Facilities and Areas in Meeting Recreational Demands and Standards

As the inventory illustrates, La Crosse County has a wealth of recreational opportunities. An important part of the planning process is to determine if the existing recreation areas and facilities meet the recreational standards of the county. The recreation planning process determined that the acceptable recreational standard for La Crosse County be 12 acres/per every 1,000 people. The projected population for La Crosse County in 2020 is 122,100 people. In order to meet the recreational standard La Crosse County should have approximately 1,465 acres of recreational facilities. Adding up the developed County Parks (1,197 acres), Town Parks (190+ acres), and school facilities (580 acres) there are over 1,989 acres of recreational facilities in La Crosse County. This surpasses the acceptable recreational standard defined by the planning process. It is important to note that this inventory does not include a complete listing of all the recreational facilities in the City of La Crosse, City of Onalaska, Village of Holmen, and the

Village of West Salem as these municipalities have completed independent outdoor recreation plans. Additionally, the vast amount of recreational areas in La Crosse County are important to consider. If the federal, state and county recreational areas are taken into consideration an additional 31,000 acres of trails, paths and passive recreational opportunities are available to county residents.



Goose Island County Park assists La Crosse County in meeting recreational demands of its residents.

It is also important to determine if the recreation facilities and areas meet the recreation demands of the population. Demand was reviewed by considering the results of the Wisconsin State Wide Comprehensive Outdoor Recreation Plan previously detailed. A review of the recreational opportunities inventoried that are available in La Crosse County, illustrates that the county offers ample opportunities for residents to enjoy the Top 5 SCORP nature-based activities; hiking/walking/running on trails, visiting a beach/beach walking, bird/wildlife watching at home, swimming in lakes/ponds/rivers, and motor boating. In addition, the inventory demonstrates that the top 20 SCORP activities are all available in La Crosse County for residents and visitors to enjoy.

The top outdoor recreation activity identified by SCORP was “hiking/walking/running on trails”. La Crosse County consists of both an urban and rural environment in which varying opportunities exist for hiking/walking/running on trails. A goal of the outdoor recreation plan identified in Chapter 3 points towards the need for additional greenways and a more connected recreational environment (open space corridors, trails, etc). This goal was developed **primarily because of the changes to the county’s rural environment due to development. The county’s existing** recreational facilities offer opportunities for hiking/walking/ running on trails. However, the urbanization of the **county’s rural areas has not been sensitive to these** activities. Historically, hiking/walking/ running in the rural areas has taken place along the county and town roads. As development has increased in the rural areas, these traditional walkways in many cases are no longer safe for pedestrian traffic nor a pleasurable experience. Therefore, a goal of the plan to create open space corridors and trails will in part account for changes in land use patterns and accommodate the states number **one recreational activity** “hiking/walking/ running on trails”.

Another positive factor influencing the creation of open space corridors and trails to meet future recreational demand is the efforts of the the Bluffland Coalition (organization described below). The Bluffland Coalition is an integral part of the La Crosse County Recreational Plan. The vision of the Bluffland Coalition is to establish an exceptional network of contiguous protected lands and recreational trails throughout the La Crosse –La Crescent region. Our cooperative efforts will enhance the health of residents, visitors, natural ecosystems and our local economy. The Bluffland Coalition is working with various different agencies to bring more recreational areas into the area and to connect existing recreational areas to increase the overall outdoor recreational activity. The Bluffland Coalition is doing this by a process of land acquisitions. The land acquisitions will be done by a combination of grants and contribution of the Bluffland Coalition and different government agencies that follow the Bluffland Coalition Plan. The member of board of the Bluffland Coalition will oversee the best use for the newly acquired lands.

Facility Accessibility

The La Crosse County Facilities Department is sensitive to the needs of the elderly and disabled and is continually making efforts to improve accessibility at its county recreation facilities. As funding for future projects and improvements becomes available, future projects and improvements will meet Americans with Disabilities Act standard.

Recreation Enhancement/Preservation Organizations

Bluffland Coalition

The Bluffland Coalition is a coalition of organizations that over the years have spurred efforts to preserve blufflands in La Crosse County and provide nature-based recreation opportunities on preserved properties when possible. The Bluffland Coalition is guided by a plan that was an initiative of the La Crosse Area Planning Committee (LAPC) to organize a regional approach to the conservation and recreational use of blufflands. In creating the plan, the LAPC assembled a steering committee representing key City, County and Town communities, plus the Seven Rivers Regions Outdoor Recreation Alliance and Mississippi Valley Conservancy. It is intended that the plan be used by public and private stakeholders throughout the region to guide the acquisition of conservation land and easements, coordinate restoration activities and recreation access.

The plan developed identifies the following “Six Big Ideas”:

1) Commitment to Cooperation

All Bluffland acquisition, restoration, recreation and promotion efforts *coordinated* by a regional entity - the Blufflands Coalition - with representation from all public bluffland property owners and key land trust and recreation groups. Approval or endorsement of this plan is the first step in improved cooperation, and creation of the Coalition through a multi-party Memorandum of Understanding (MOU).

2) Land - Protected and Connected

A network of connected blufflands around the region’s cities and villages, protected from urban development and cooperatively managed.

3) Trails, Trails, Trails

A network of interconnected trails throughout the region will offer recreation options for every type of use and skill level and will become a defining feature of the region that attracts tourists and a competitive workforce. **The centerpiece will be the “La Crosse Blufflands Trail” a shared use route extending unbroken from the south end of La Crosse to Onalaska, and eventually north of Holmen.**

4) Restoration

Invasive species issues are common in blufflands throughout the region. Restoration initiatives to manage invasives and promote the success of native species are important to the health and value of these lands.

5) Many Sites, One Brand

Seamless, coordinated promotional efforts and signage to increase awareness and use throughout the region.

6) Dedicated Funding

A reliable source (or sources) of annual funding to support coordination efforts (highest priority) and land acquisition, trail and amenity improvements, maintenance, habitat restoration, and promotion.

A map of the Bluffland Coalition’s proposed Regional Bluffland Trail is included in Appendix D.

Bluffland Coalition Future Projects

-Utilize the Bluffland Plan to guide the purchase of up to 3,000 acres of additional land to be utilized for bluffland preservation and nature-based recreation activities (trails, etc.).

VI. OUTDOOR RECREATION ACTION PROGRAMS AND FUNDING OPTIONS

The La Crosse County Outdoor Recreation Plan will improve the regions recreational opportunities if fully implemented. One of the keys to achieving the goals identified in this plan will be for municipalities to cooperate with one another in implementing the various elements. As illustrated earlier in the plan the county has a vast amount of recreational resources. The action programs primarily focus on improving existing facilities or developing recreational facilities at identified locations. The following **“Action Programs”** have been developed as a result of public and community involvement during the planning process.

Outdoor Recreation “Action Programs”

The outdoor recreation planning process identified projects that need to be undertaken to address future recreational demands of La Crosse County and its municipalities. The following action programs have been developed for each municipality that identified future recreation projects. The projects were prioritized by the cooperating municipalities.

La Crosse County Action Program

Continued Operation and Maintenance of Existing Recreational Facilities

La Crosse County maintains a Facilities Department that is responsible for the operation and maintenance of the existing county recreation facilities and areas. The Facilities Department maintains an annual Parks budget for the **operation and maintenance of existing facilities. Table 10 illustrates La Crosse County’s actual revenues, expenditures and improvements for the recreational facilities and areas from 2010 – 2017 and the budgeted revenues, expenditures and improvements for 2018-2019.**

In order to maintain and operate the parks, the Facilities Department has a permanent staff of seven employees. In addition, the department employs ten seasonal employees and privately contracts with one campground manager. The department also cooperates with other county departments in meeting maintenance demands (i.e. Highway Department).

Table 10. Actual and Budgeted Outdoor Recreation Funding for Selected Years

Year	Revenue Actual	Expenditures Actual	Improvements Actual
2010	\$485,853	\$756,765	\$97,682
2011	\$465,173	\$712,853	\$87,015
2012	\$393,936	\$702,262	\$105,149
2013	\$515,258	\$789,367	\$125,583
2014	\$623,132	\$882,621	\$182,628
2015	\$640,019	\$851,423	\$214,410
2016	\$644,268	\$866,474	\$96,104
2017	\$668,328	\$908,158	\$202,620
Year	Revenue Budgeted	Expenditures Budgeted	Improvements Budgeted
2018	\$652,585	\$913,349	\$33,000
2019	\$684,628	\$903,977	\$228,181

Source: La Crosse County Facilities Department

La Crosse County and the Facilities Department are also active in improving and expanding the recreational opportunities available. As Table 10 demonstrates, the County's commitment to outdoor recreation enhancement by the allocations for recreational improvements over the last several years averaging approximately \$138,800 a year. This funding in part funds future facility improvement projects. Table 11 illustrates recreation projects that have been funded and completed by the La Crosse County Facilities Department since 2010.

Park Name	Project(s)	Estimated Cost	Implementation Year
Mindoro Park County Park	Road Repair	\$10,300	2010
Neshonoc South County Park	Rip Rap shoreline (Lewis Point)	\$16,500	2009 - 2010
Veterans Memorial County Park	Remodel of Bathhouse #1 - two handicap accessible family style restrooms and laundry facility	\$115,000	2009 - 2010
Mindoro Park County Park	Playground Structure (Miss Mindoro Group contributed \$10,000)	\$21,000	2010
Veterans Memorial County Park	Shoreline improvement - riprap shoreline improve canoe access	\$50,000	2008 - 2011
Goose Island County Park	Reroof Shelter #4	\$2,800	2011
Neshonoc South County Park	Road Improvement - crack sealed existing road and paved 2,277' of new road	\$57,100	2011
Goose Island County Park	Purchase and install shoreline riprap	\$17,200	2010-2012
Veterans Memorial County Park	Pond improvements - dredged, rip rap placed along damaged shoreline areas and installed an hybrid wind/electric aerator	\$28,100	2012 - 2015
Neshonoc South County Park	Purchase and install shoreline riprap	\$3,000	2013
Goose Island County Park	Bathhouse #1 replace trim, fascia and soffit	\$2,300	2013
Goose Island County Park	Campground Store Exterior Log Repairs	\$9,500	2013
Goose Island County Park	Replace Fuel Dispensing Station	\$22,800	2013
Goose Island County Park	fire rings	\$8,300	2013 - 2014
Neshonoc Swarthout County Park	Replace existing vault toilet facility with a handicap accessible vault toilet facility	\$42,700	2013 - 2014
Goose Island County Park	Campground Store Insulate Ceiling, replace lights	\$6,500	2014
Neshonoc Swarthout County Park	Pave Park Road and Beach Parking Area (Friends of Lake Neshonoc contributed \$17,500)	\$78,000	2015
Goose Island County Park	Reroof Shop	\$17,500	2015
Goose Island County Park	Installed Dock at North Boat Landing	\$5,400	2015
Veterans Memorial County Park	Installed interceptor tank on septic system	\$4,200	2015
Veterans Memorial County Park	Campground Store Improvements - handicap accessible store entry and concrete	\$15,000	2015
Goose Island County Park	Bathhouse #3 - replace roof, windows and siding	\$22,000	2016
Goose Island and Veterans Memorial County Parks	Fire rings and Picnic Table Replacement	\$25,000	2016

Table 11: Recreation projects that have been funded and completed by the La Crosse County Facilities Department since 2010 (Continued)				
	Park Name	Project(s)	Estimated Cost	Implementation Year
	Mindoro Park County Park	Pit Toilet Facility Roof Replacement	\$400	2016
	Neshonoc South County Park	Repair culvert washout on park road (FEMA reimbursement 87.5%)	\$20,000	2016
	All County Parks	Road Repairs	\$155,000	2012 - 2017
	Goose Island County Park	Electrical and water upgrades in Goose Island	\$74,000	2012 - 2017
	Veterans Memorial County Park	Maintenance shop for park staff - new construction and relocated in Veterans Memorial Park	\$150,000	2014 - 2017
	Veterans Memorial County Park	Campground Store Improvements - new windows, siding, gutters, soffit and fascia	\$19,000	2016 - 2017
	Goose Island County Park	Remodel of Bathhouse #1 - new partitions and tiling in shower areas, new windows, new paint inside and outside	\$31,000	2017
	Goose Island County Park	Demolished pit toilet facilities at South Boat Landing	\$600	2017
	Veterans Memorial County Park	Replace roofs on Park Shelters 3 and 4	\$15,000	2017
	Goose Island County Park	Upgrade Primary Electric removing overhead wires and installing underground	\$146,000	2012 - 2018
	Goose Island County Park	New construction and relocation of Shelter # 2 and Shelter # 3	\$161,000	2018
	Neshonoc South County Park	Grade Stabilization Structure	\$17,632	2018
	Goose Island County Park	Purchase and install rip rap - north and west shoreline	\$32,300	2018
	Goose Island County Park	Vault Toilet Facilities Repairs at Shelter #1 (roof, windows, dividers)	\$6,240	2018
	All County Parks	Playground Equipment	\$5,000	2019
	Veterans Memorial County Park	Utility Shed	\$3,000	2018
	Mindoro Park County Park	Trail road and parking improvement	\$45,000	2018 - 2019
	Neshonoc South County Park	Purchase and install rip rap	\$67,262	2018 - 2019
	All County Parks	Park and campground road repairs	\$23,000	2019
	Veterans Memorial County Park	Install fiber line for internet access	\$25,000	2019
	Veterans Memorial County Park	Re-roof shelter #2	\$0000	2020
	Goose Island County Park	Install 90' communicat. tower behind main. shop	\$20,000	2020

Facility Improvement Projects

As the evaluation of existing recreational facilities and areas demonstrated La Crosse County has a tremendous amount of recreational opportunities. Table 12 identifies and prioritizes future projects to assist the county in improving existing recreational facilities and areas.

Table 12: La Crosse County Action Program				
Future recreation projects identified by the County of La Crosse. Listed in order of priority.				
	Park Name	Project(s)	Estimated Cost	Implementation Year
1.	All County Parks	Ash tree removal and tree replanting	\$130,000	2017 - 2020
2.	Goose Island County Park	FLAP Grant Match - (grant match is \$793,838)	\$1,130,000	2019 - 2020
3.	Goose Island County Park	Water Tower Cold Weather Isolations Valves	\$1,000	2019
4.	Veterans Memorial County Park	Water Tower Cold Weather Isolations Valves	\$1,000	2019
5.	Mindoro County Park	Replace Concrete Pad in Pavilion	\$10,000	2019
6.	All County Parks	Vault Toilet Facilities Repairs (roof, windows, dividers)	\$8,400	2019
7.	Goose Island County Park	Bathhouse #2 Improvements	\$10,000	2019 - 2020
8.	Goose Island County Park	Bathhouse #1 Improvements	\$7,100	2019
9.	Veterans Memorial County Park	New signs: entry, interior, trails, etc.	\$20,000	2019-2021
10.	Goose Island County Park	New signs: entry, interior, trails, etc.	\$20,000	2019-2021
11.	Goose Island County Park	Replace pole mounted transformer with ground mount and replace secondary power to shelter # 5	\$5,000	2020
12.	All County Parks	Road Repairs	\$120,000	2021 - 2023
13.	Goose Island and Veterans Memorial County Park	Replace and improve existing secondary electrical service in the campgrounds	\$115,000	2021 - 2023
14.	Veterans Memorial County Park	Picnic Table Replacement	\$25,000	2021
15.	Goose Island County Park	Picnic Table/Fire Ring Replacement	\$25,000	2022
16.	All County Parks	Playground Equipment	\$90,000	2023
17.	Neshonoc Swarthout County Park	Purchase and install playground equipment	\$25,000	2024
18.	Veterans Memorial County Park	Purchase and install playground equipment	\$35,000	2024
19.	Goose Island County Park	Purchase and install playground equipment	\$35,000	2024
20.	Lake Neshonoc South County Park	Construct biking and hiking trails	\$500,000	2024

Connected Recreational Environment

A goal identified in the planning process was to work towards creating recreational linkages (trails, open space corridors, etc.) throughout La Crosse County. This can be accomplished by requiring future developments/redevelopments (at their expense) to incorporate greenways or other recreational resources into their projects. La Crosse County and local municipalities will also work toward acquiring (through state grant funding) specific properties that would connect existing trails or expand existing open space corridors.

Marketing

Public outdoor recreational facilities are often taken for granted and for this reason in difficult economic times funding for such facilities is scrutinized and in many cases reduced or eliminated. Therefore, marketing has been identified by La Crosse County as needed to bring public awareness to the existing recreational facilities and in doing so provide an alternative source of funding for the various recreational facilities and programs. In an effort to promote public awareness La Crosse County will continue to pursue and enhance the following marketing strategies:

- **Development/update of a La Crosse County Parks Brochure**
- **Internet Web Site Design and Marketing**

Impact Fees

As earlier discussed, in difficult economic times funding for recreation facilities and programs is often reduced or eliminated. Therefore, La Crosse County will consider pursuing the implementation of a recreational use impact fee for the purpose of funding the development of future recreational facilities and programs. The County will work with local units of government on determining the viability of assessing recreational impact fees.

Boat Launch Fees

La Crosse County managed boat launches experience heavy use and require annual maintenance. To meet increased demands/needs of the launch users, the County continues to evaluate implementing a boat launch fee at County managed boat launches.

Town/Village Action Programs

As part of the planning process six towns and two villages submitted future projects that they plan on undertaking (provided funding is available) to meet future recreational demands.

Funding for the improvements will be derived from local sources (local budgets, donations, etc.) and applications will be made to state agencies or private foundations for eligible projects. A listing of possible funding sources is detailed later in this chapter.

The towns/villages with locally administered parks operate and maintain the parks through funds designated in their existing budgets. The operation and maintenance of the parks primarily involves lawn mowing, garbage collection and minor maintenance repairs.

The following tables detail the action programs of the municipalities.

Table 13. Town of Holland

<i>Town of Holland Action Program</i>				
Future recreation projects identified by the Town of Holland. Listed in order of priority.				
	<u>Park Name</u>	<u>Project(s)</u>	<u>Estimated Cost</u>	<u>Implementation Year</u>
1.	Gaynor Park	Replace outdated swing set	\$2,525	2019
2.	Wildflower Park	Install Gazebo, walking trail, benches and landscaping existing grounds	\$20,000	2019-2020

Table 14. Town of Farmington

<i>Town of Farmington Action Program</i>				
Future recreation projects identified by the Town of Farmington. Listed in order of priority.				
	<u>Park Name</u>	<u>Project(s)</u>	<u>Estimated Cost</u>	<u>Implementation Year</u>
1.	Browns Valley School	Replace outdoor toilet facilities	\$20,000	2025
2.	Mindoro Ballfield	Replace ballfield lights	\$90,000	2028-2029

Funding Options

Numerous grant programs for public recreation facilities and areas are available through state and federal offices as well as through private foundations. All the programs are available to counties, cities, villages, towns and recognized Native American tribal units, and in some cases public school districts, and non-profit organizations, if the land owned by them is open to the general public for outdoor recreation. A list and brief description of the potential funding programs follows:



Kids Coulee Recreation Park in La Crosse

Department of Natural Resources Administered Programs

All Terrain Vehicle Trails

Counties, cities, villages, and towns are eligible for up to 100% (including \$ per mile caps) of the costs of maintenance, development, rehabilitation, insurance, and acquisition of ATV trails and intensive use areas. Applications are due to the DNR by April 15 each year.

ATV Enforcement Patrol

County Sheriff Departments are eligible for up to 100% of their net costs (salaries, fringe benefits, travel, materials, supplies, etc.) associated with all-terrain vehicle patrols and enforcement. A county must file a Notice of Intent to Patrol form with the DNR on or before July 1 of each year. Claim forms shall be filed with the DNR on or before September 1.

County Conservation Aids

Counties or recognized Indian tribes are eligible for 50% of the costs of carrying out fish or wildlife management projects that enhance fish and wildlife habitat or relate to hunter/angler facilities. Applications are submitted throughout the year until funding is depleted

Federal Aid in Sport Fish Restoration

The DNR prioritizes fisheries related projects (sportfish restoration, boating access, fishing piers) to identify projects eligible for a 75% cost share; the DNR sometimes negotiates contracts and develops use agreements with counties, villages, and towns for use of this funding for construction of boat landings and fishing piers. The amount of funding available varies depending upon excise tax revenue from fishing equipment sales and the federal gas tax.

Knowles-Nelson Stewardship Local Assistance Programs: Acquisition and Development of Local Parks

Qualified towns, villages, cities, counties, Indian tribes, and nonprofit conservation organizations as defined under s. 23.096, Wis. Stats., are eligible for up to 50% of the costs of acquisition of land or conservation easements and development of facilities for public park and recreation areas used for nature-based outdoor recreation purposes. Applications are due to the DNR by May 1 of each year.

Knowles-Nelson Stewardship Local Assistance Programs: Acquisition of Development Rights

Qualified towns, villages, cities, counties, Indian tribes, and nonprofit conservation organizations as defined under s. 23.096, Wis. Stats., are eligible for up to 50% of the costs to acquire development rights (conservation easements) in areas where restrictions on residential, industrial, or commercial development would provide or enhance nature-based outdoor recreation. Applications are due to the DNR by May 1 of each year.

Knowles-Nelson Stewardship Local Assistance Programs: Urban Green Space

Qualified towns, villages, cities, counties, Indian tribes, and nonprofit conservation organizations as defined under s. 23.096, Wis. Stats., are eligible for up to 50% of the costs of acquisition of land and conservation easements for nature-based outdoor recreation purposes that will protect open natural space and land with scenic, ecological, or natural values in urban areas. Applications are due to the DNR by May 1 of each year.

Knowles-Nelson Stewardship Local Assistance Programs: Urban Rivers

Qualified towns, villages, cities, counties, Indian tribes, and nonprofit conservation organizations as defined under s. 23.096, Wis. Stats., are eligible for up to 50% of the costs of acquisition of land or conservation easements and development of facilities for public park and recreation areas, including shoreline enhancements, for nature-based outdoor recreation purposes along urban waterways and riverfronts. Applications are due to the DNR by May 1 of each year.

Land and Water Conservation Fund (LWCF)

Qualified towns, villages, cities, counties, Indian tribes, and school districts are eligible for up to 50% of the costs of acquisition of land and development of facilities for public park and recreation areas. Applications are due to the DNR by May 1 of each year. The amount of funding available varies depending upon the amount appropriated by Congress to the program within the Department of **Interior's budget each year.**

Municipal Water Safety Patrols State Assistance

Municipalities, tribes, inland lake rehabilitation and protection districts, and sanitary districts are eligible to receive up to 75% of the costs (salaries, supplies, and equipment) of operating a Boating Law Enforcement program, including conducting boating education programs, providing professional enforcement of boating laws and local regulations, and providing search and rescue for live persons. Applicants must file an Intent to Patrol form with the DNR on or before March 1 of each year. Claim forms shall be filed with the DNR on or before January 31.

Recreational Boating Facilities

Counties, cities, villages, towns, sanitary districts, public inland lake protection and rehabilitation districts, and qualified lake associations are eligible for up to 50% of the costs of feasibility studies and the construction of capital improvements related to the development of safe recreational boating facilities, purchase of aquatic weed harvesting equipment, purchase of navigation aids, dredging of channels of waterways, and chemical treatment of Eurasian watermilfoil. An additional 10% may be available if a municipality conducts a boating safety enforcement and education program approved by the DNR. Projects of statewide or regional significance may be eligible for additional 30% cost-sharing assistance. Applications are due to the DNR and are reviewed and recommended quarterly by the governor-appointed Wisconsin Waterways Commission.

Recreational Trails Program

Towns, villages, cities, counties, tribal governing bodies, school districts, state agencies, federal agencies, and incorporated organizations are eligible to receive up to 50% of the costs of maintenance and restoration of existing trails, development and rehabilitation of trailside and trailhead facilities and trail linkages, construction of new trails (with certain restrictions on federal lands), and acquisition of easements or property for trails. Funds are available for both motorized and non-motorized trails. Applications are due to the DNR by May 1 of each year. The amount of funding available varies depending upon federal gas excise taxes paid on fuel used by off highway vehicles.

Snowmobile Trail Aids

Counties are eligible for 100% (including \$ per mile caps) of the cost of approved trail maintenance, development, major bridge rehabilitation, and trail rehabilitation. Applications are due to the DNR by April 15 of each year.

County Snowmobile Enforcement Patrols

County sheriff departments are eligible for up to 100% of their net costs (salaries, fringe benefits, travel, materials, supplies, etc.) associated with snowmobile patrols and enforcement. A county must file a Notice of Intent to Patrol form with the DNR on or before June 1 of each year. Claim forms shall be filed with the DNR on or before June 1.

Department of Transportation Administered Programs

1. Transportation Alternatives Program (TAP)

The program provides up to 80 percent federal funding for activities related to transportation, some of which have direct outdoor recreation relevance (sidewalks, trails, rest areas, etc.).

National Scenic Byways Program

Authorizes funding for the development of the scenic byways program. The Great River Road is an example of a National scenic byway. No direct federal funding is allocated for the program at this time.

Private Foundations

Natural Resources Foundation of Wisconsin, Inc.

This non-profit organization develops, promotes, and funds education, restoration, and management programs **related to Wisconsin's natural resources.**

VII. PLAN REVIEW

A critical element of outdoor recreation planning is developing a method for the periodic review of the plan and assessment of the plan's effectiveness at meeting the stated recreational goals and objectives. Of equal importance is the recognition that the five-year plan must be dynamic and have the ability to change when faced with unforeseen challenges. Therefore, it is recommended that the following activities are pursued:

-In January of **each year, the La Crosse County Facility's Department will review the various "action plans" to determine the status of the various projects. This review may require contacting the various** local units of government to inquire as to the status of the various projects. Based on this review the inventory section of the Outdoor Recreation Plan will be updated.

-In January of 2024, the La Crosse County Public Works and Infrastructure Committee and Facilities Department will begin a comprehensive review of the Outdoor Recreation Plan for the purpose of updating the plan by December 31, 2024.

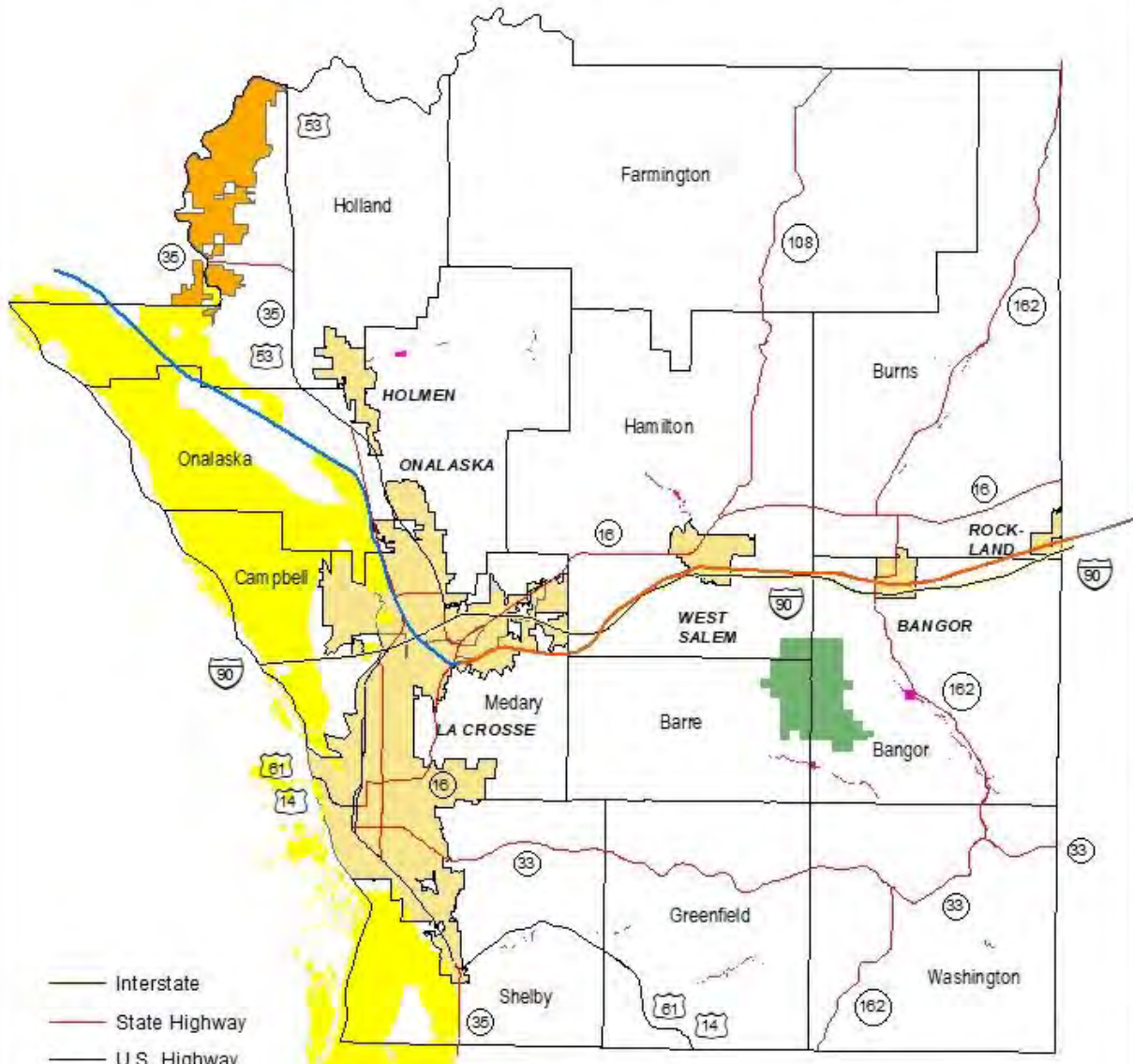
VIII. CONCLUSION

The Outdoor Recreation Plan for La Crosse County has demonstrated that the County has a wealth of recreational facilities and areas. Therefore, a primary purpose of this plan is to ensure that the existing recreational facilities are enhanced by continually striving to improve the facilities. Additionally, the goals of the plan point towards a connected and well-planned recreational environment. This in part can be accomplished by continually improving existing recreational areas and acquiring through purchase or easement key environmentally and/or recreational sensitive properties. The future of La Crosse County is bright and by preserving and enhancing the recreational opportunities in the county, residents will continue to find it a great place to live.

Appendix A

-Map of La Crosse County Major
Federal and State Recreational Lands

La Crosse County Major Federal and State Recreation Lands



- Interstate
- State Highway
- U.S. Highway
- Town Boundary
- City / Village
- COULEE EXPERIMENTAL FOREST
- LA CROSSE AREA COMPREHENSIVE F.A.
- LA CROSSE RIVER ST PK REC AREA TRL
- Upper Mississippi River National Wildlife and Fish Refuge
- VAN LOON WILDLIFE AREA

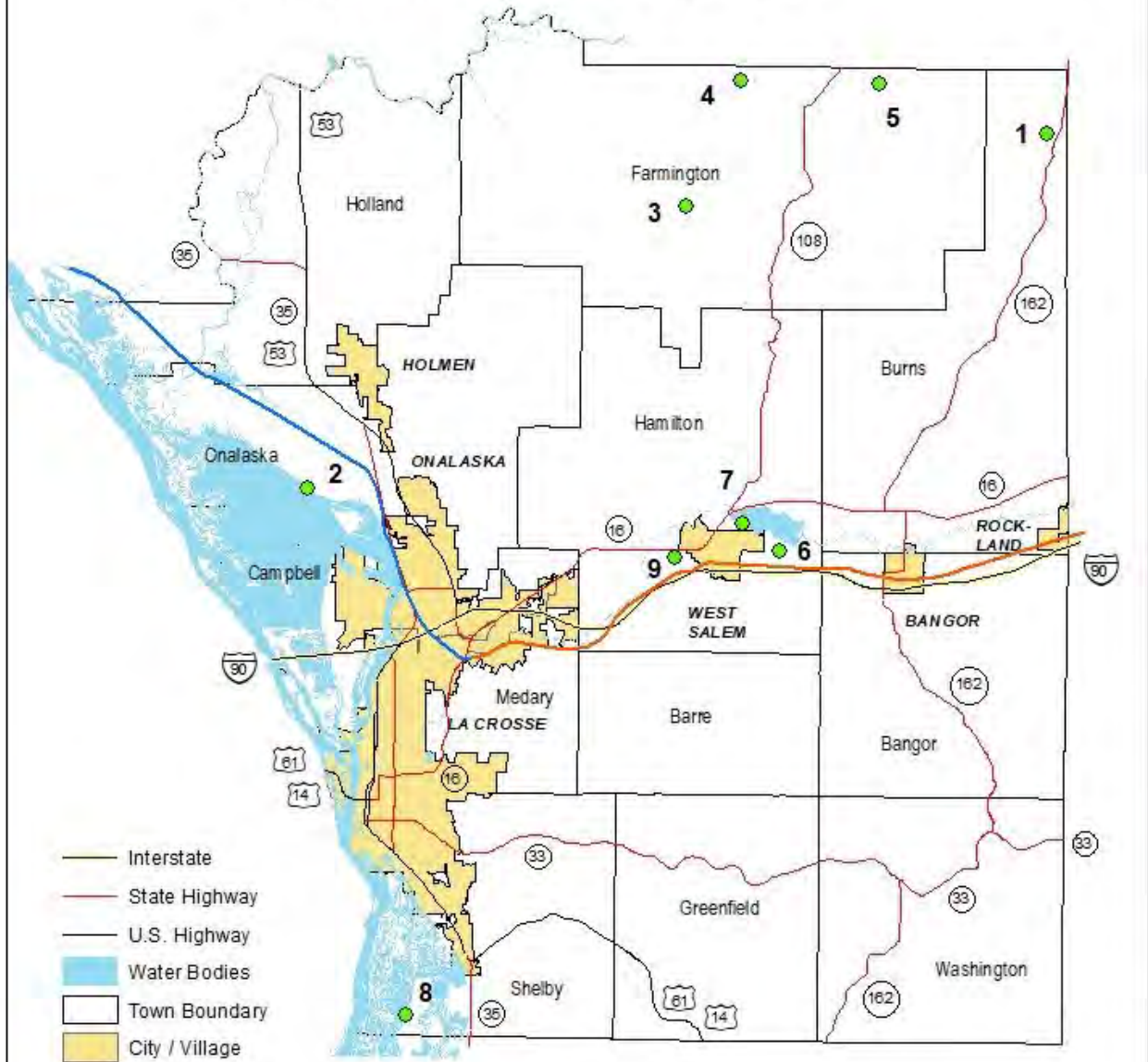


Appendix B

-Map of La Crosse County Managed
Recreational Facilities and Areas

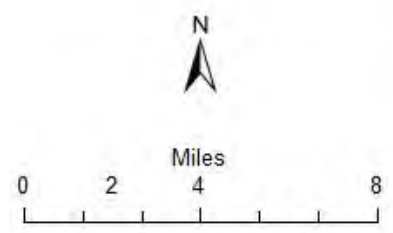
-Description of La Crosse County
Managed Parks and/or Campgrounds

La Crosse County County Managed Recreation Facilities and Areas



- Interstate
- State Highway
- U.S. Highway
- Water Bodies
- Town Boundary
- City / Village

- 1) County Forest Preserve
- 2) Lake Onalaska Shoreline Access
- 3) Mindoro County Park
- 4) Hoeth Forest
- 5) Bice Forest
- 6) Lake Neshonoc South County Park
- 7) Neshonoc Swarthout County Park
- 8) Goose Island County Park and Campground
- 9) Veterans Memorial County Park and Campground



Goose Island County Park

La Crosse County leases this 771 acre park from the US Army Corps of Engineers; it is surrounded by hundreds of additional acres of federal wildlife refuge. Much of the park is native woodland and marsh located on an Island about three miles south of the City of La Crosse. The improvements and amenities in the park include a 350-site campground with water and electrically equipped sites for camper trailers and motor homes and primitive sites for tent camping. Within the campground area, there are three sanitary dump stations for the vehicular camper units. There are three shower buildings providing a total of fourteen showers, flush toilets, a laundry room and a vault toilet facility. The camp store is well stocked with camping supplies, groceries, soda, ice cream, bait, ice and propane. The beach, 9-hole mini-golf course, canoe and kayak rentals are available to all park users, not just campers. Campers have access to a water equipped, insect resistant, fish cleaning shelter, a large deck on the rear of the camp store, an activity pavilion, a basketball court, a beach volleyball court and two playgrounds.

Over 200 acres in this park is devoted to picnic sites, field games, picnic shelters and trails. The park has an artesian well and five hand pumps in the picnic areas. Scattered through the grounds are many open air tables and grills. There are five picnic shelters available for group picnics by reservation. A vault toilet is located at each of the picnic shelters as well as a beach volleyball court, horseshoe pit, grill and picnic tables. Playground equipment is located at four sites. There are three marked nature trail areas, as well as many acres of bottomland hardwoods and marsh. A 7.5-mile canoe trail is posted for clockwise travel around the island with the main access at the beach area in the campground.

There are three boat launch areas within the park. Hunters Point has a parking lot for approximately 20 vehicles and boat trailers, and has a double-wide ramp, and a single width ramp. The Upper Goose Island Ramp has a paved access ramp and parking for about ten vehicles and trailers. The west Goose Island Ramp has a double wide paved ramp and parking for about 25 vehicles and trailers.

Note: In 2013, La Crosse County Facilities Department took over complete management of the campground and park thus eliminating the concessionaire operated campground store.

Lake Neshonoc South County Park

This 60 acre tract is part of the larger County owned land that was formerly used as a farm by the health care facility. Although most of the remainder of this land is being considered for sale to private developers for other uses, the portion bordering on Lake Neshonoc's south shore has been set aside as a County park. **There is currently 1/2 mile of lake front, 3/4 mile paved road, a boat launch ramp, pier/dock, and a parking area for approximately 24 vehicles with trailers. Most of this property is currently "undeveloped" with abandoned farm fields and meadows and some native hardwood cover.** The western part of the property is within the Village of West Salem limits and the eastern portion is in the Town of Hamilton.

A handicap accessible fishing pier and parking area for approximately 6 vehicles was constructed in 2007. Sponsors of the project included the WI DNR, La Crosse County, The North American Squirrel Association (NASA), and the Lake Neshonoc Protection & Rehabilitation District.

Mindoro County Park

This 114 acre former farm is located one half mile west of the community of Mindoro on CTH D in the Town of Farmington. Although there is a gravel access road and parking lot, a picnic area with an electrically wired shelter, playground apparatus, vault toilets, hand pump and a ball diamond; the main feature of the park is the management decision to allow most of the acreage to revert back to a natural state, helped along

by 60 acres of planted pines, walnuts, larch, and wildlife shrubs. There is one maintained trail that winds through the planted area.

Neshonoc Swarthout County Park

The 20 acres of Neshonoc Swarthout Park is located at the northwest end of the lake, within the West Salem Village limits. Rustic Road R-31 has its north terminus located in this park. The park is located along the lake shore just above the dam and along the south shore of the La Crosse River below the dam, and extends on both sides of STH 16 and STH 108, with the east side, on the lake shore, having a picnic shelter, tables and grills, vault toilets, hand pump, one grass volleyball court, playground apparatus, and a boat ramp and courtesy pier. There is also a historic marker which describes the former community of Neshonoc, an early commercial rival of West Salem. Below the dam there is a canoe launch area and an extensive area of wildlife food plots and natural wetlands.

Veterans Memorial County Park

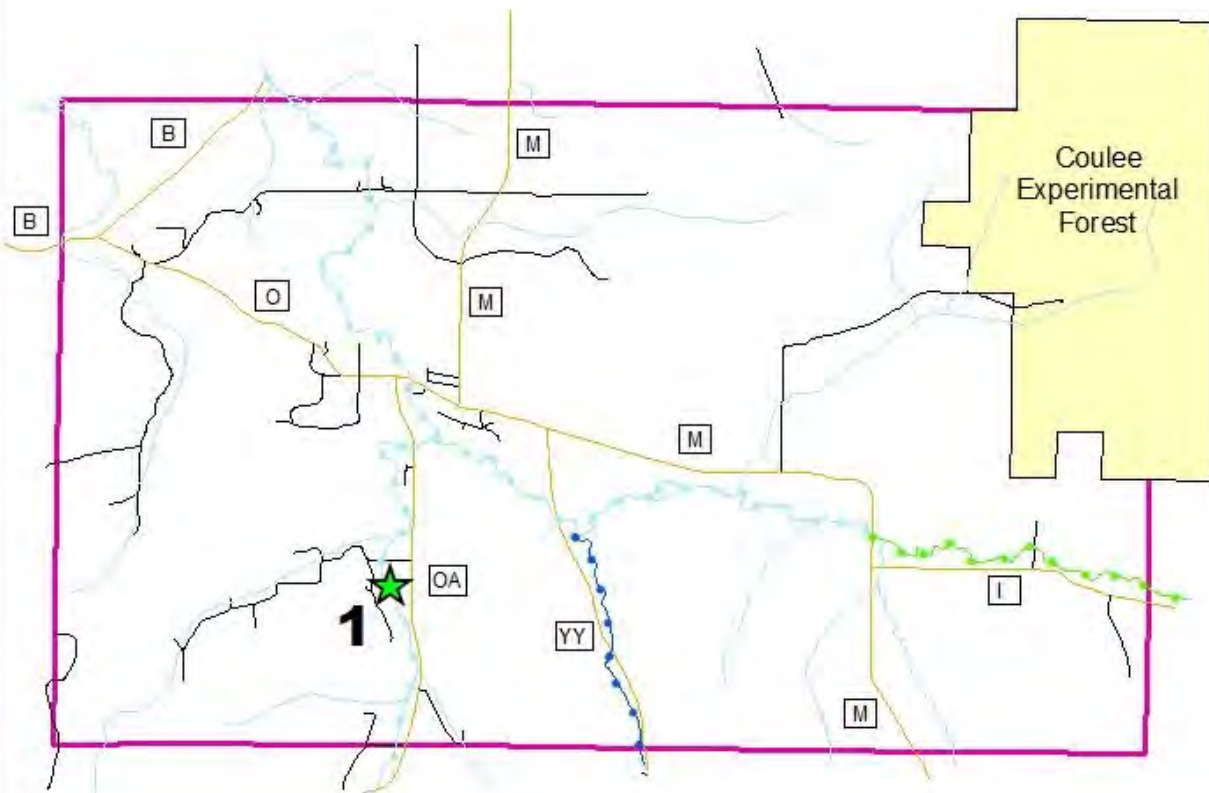
This 232 acre park is located in the approximate geographic center of La Crosse County within the Town of Hamilton. Principal access is by way of STH 16 and is approximately 10 miles from the City of La Crosse and the park is adjacent to the Village of West Salem. Included within the park are approximately 3 1/2 miles of paved road, four picnic shelters, and 120 camping sites. The campground includes water and electrically equipped sites for trailers and motor homes, and an area for tent camping. The campground has a concessionaire operated camp store providing limited groceries, soda, ice cream, and ice. There is one sanitary dump station for the vehicular camper units. Two shower buildings provide flush toilets, showers, two family style restroom areas each equipped with a shower, and a laundry room. There are five vault toilets available to the four picnic shelters and other users of the park. Two artesian wells and two hand pumps, in addition to the spigots at the shower buildings, provide water to the park users. Constructed recreational facilities include three ball diamonds, four grass volleyball courts, one sand court in the camping area, a canoe landing on the La Crosse River, a 1/2 mile paved leg to the La Crosse River State Trail and an extension to a snowmobile trail. There is a lagoon with a picturesque bridge providing a crossing for the park road. There are hiking trails and access to both the La Crosse River bottomland ecosystem and a scenic overlook. In addition, a trail at the front of the park connects the Village of West Salem to the park without utilizing State Highway 16.

The County sponsored bicycle trail extension to the State Trail was completed in 1997 using a cost share grant from the Intermodal Surface Transportation Efficiency Act (ISTEA) Enhancement Program. A gift of 22 acres of land to the Park in which the County constructed a walking/biking/roller blading trail accessing the Park from the east side. The addition of this land enables the park to border on the western Village limit.

Appendix C

-Map of the Villages and Towns
Managed Recreational Facilities and
Areas

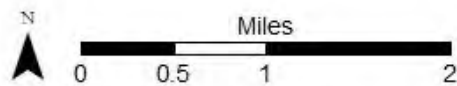
Map C-1 Town of Barre Park and Recreation



1. Barre Park

- Class I Trout Stream
- Class II Trout Stream
- Class III Trout Stream

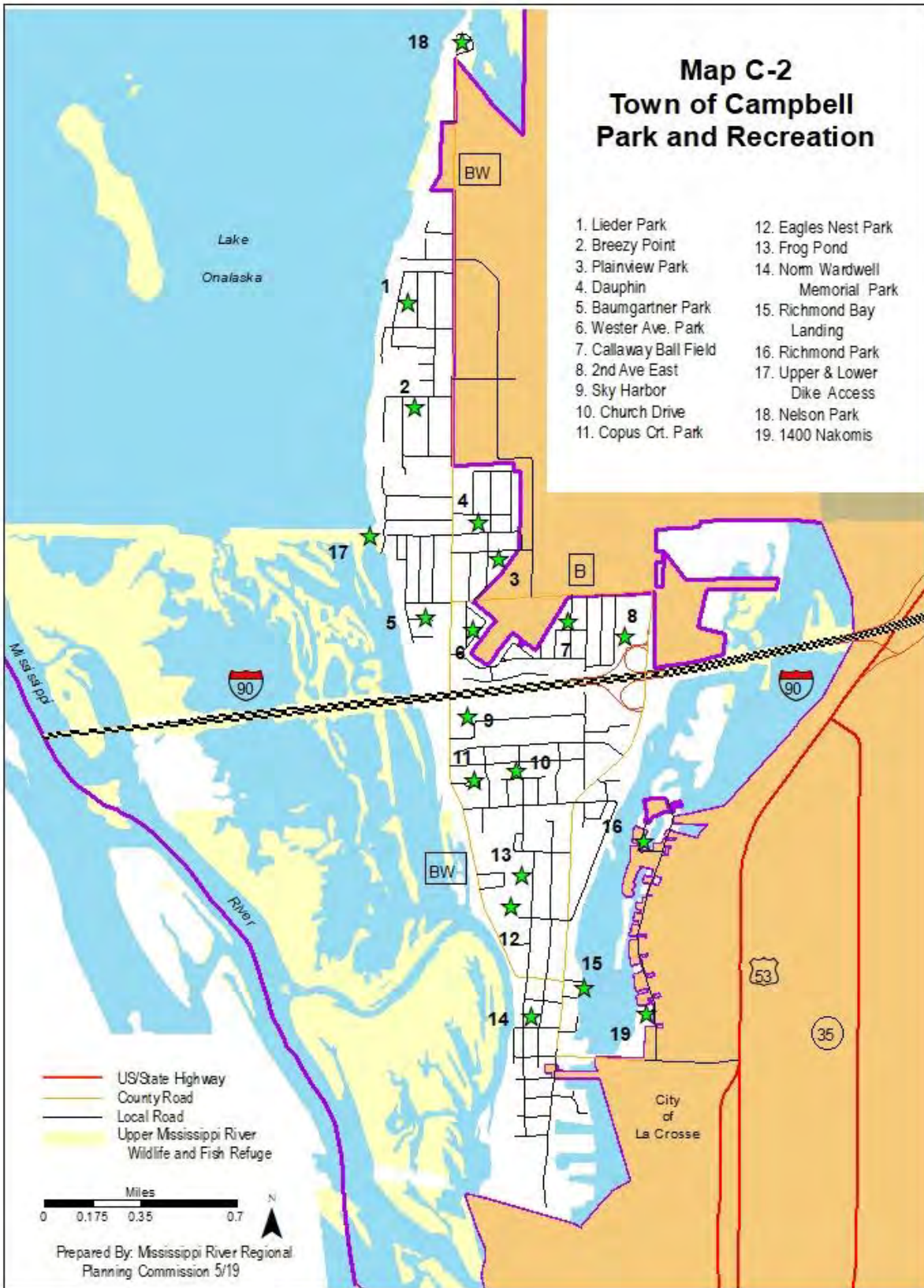
- County Road
- Local Road
- River/Stream



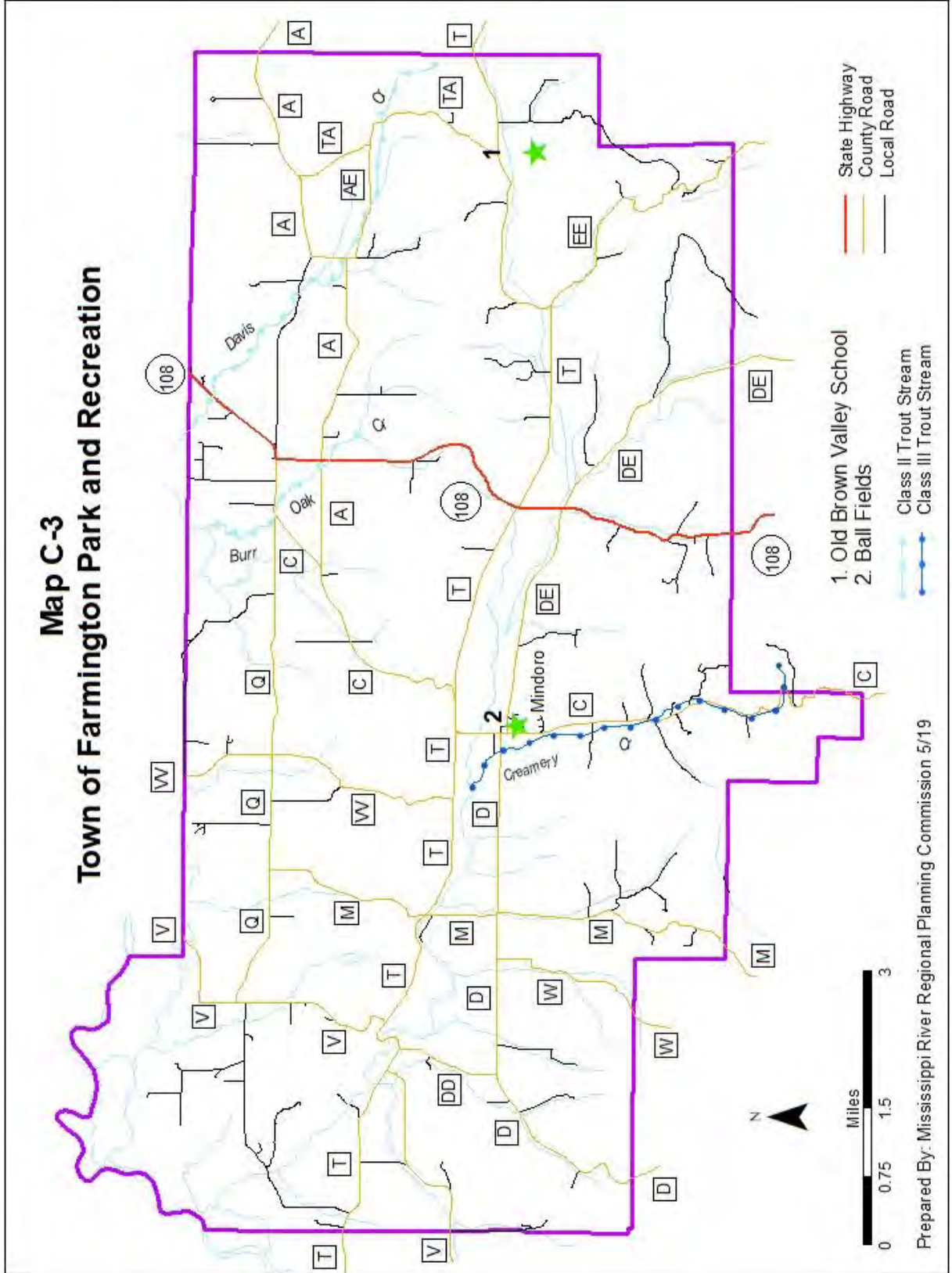
Prepared By: Mississippi River Regional Planning Commission 5/19

Map C-2 Town of Campbell Park and Recreation

- | | |
|------------------------|---------------------------------|
| 1. Lieder Park | 12. Eagles Nest Park |
| 2. Breezy Point | 13. Frog Pond |
| 3. Plainview Park | 14. Norm Wardwell Memorial Park |
| 4. Dauphin | 15. Richmond Bay Landing |
| 5. Baumgartner Park | 16. Richmond Park |
| 6. Wester Ave. Park | 17. Upper & Lower Dike Access |
| 7. Callaway Ball Field | 18. Nelson Park |
| 8. 2nd Ave East | 19. 1400 Nakomis |
| 9. Sky Harbor | |
| 10. Church Drive | |
| 11. Copus Cr. Park | |

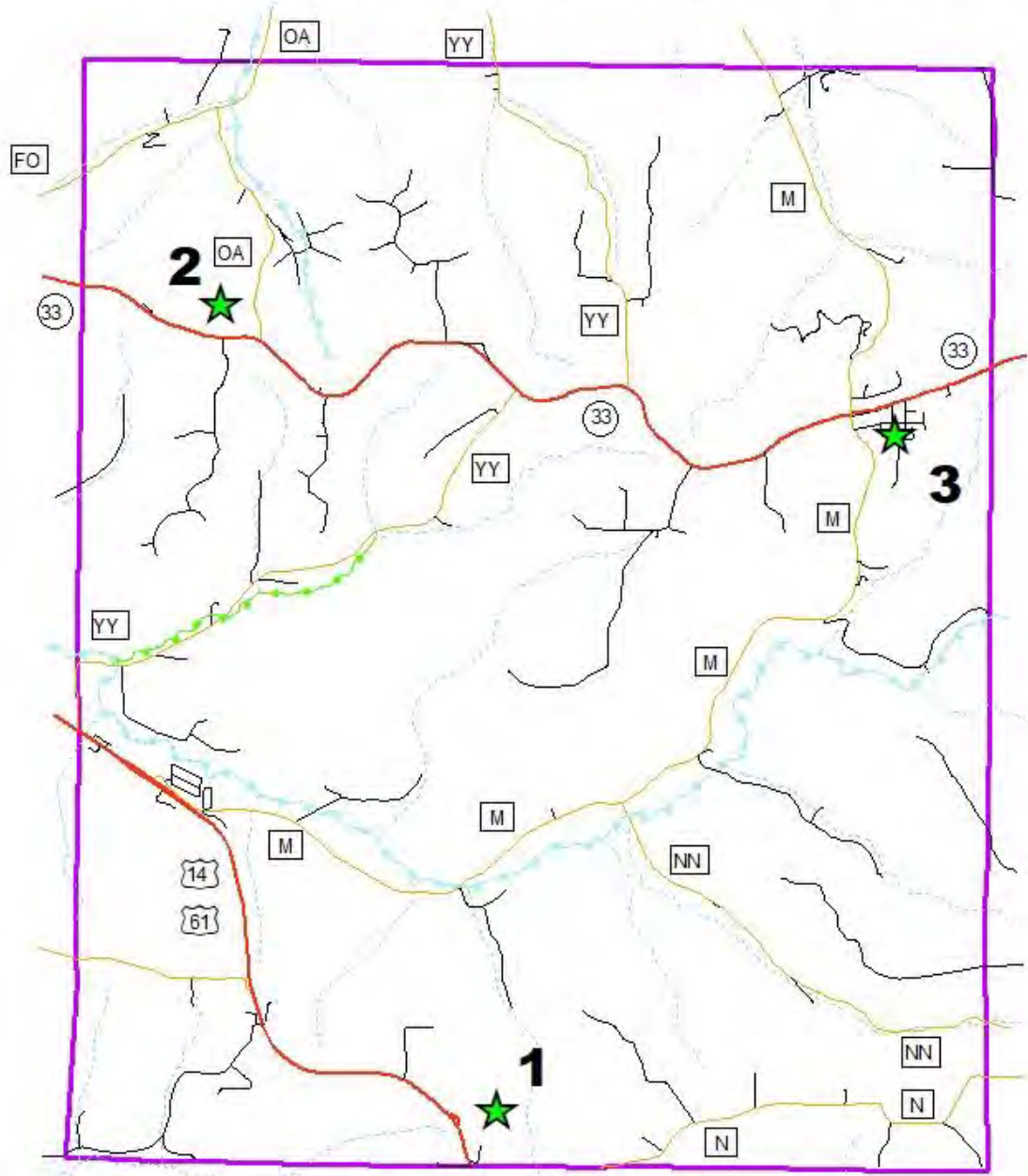


Map C-3 Town of Farmington Park and Recreation



Prepared By: Mississippi River Regional Planning Commission 5/19

Map C-4 Town of Greenfield Park and Recreation



— State Highway
— County Road
— Local Road

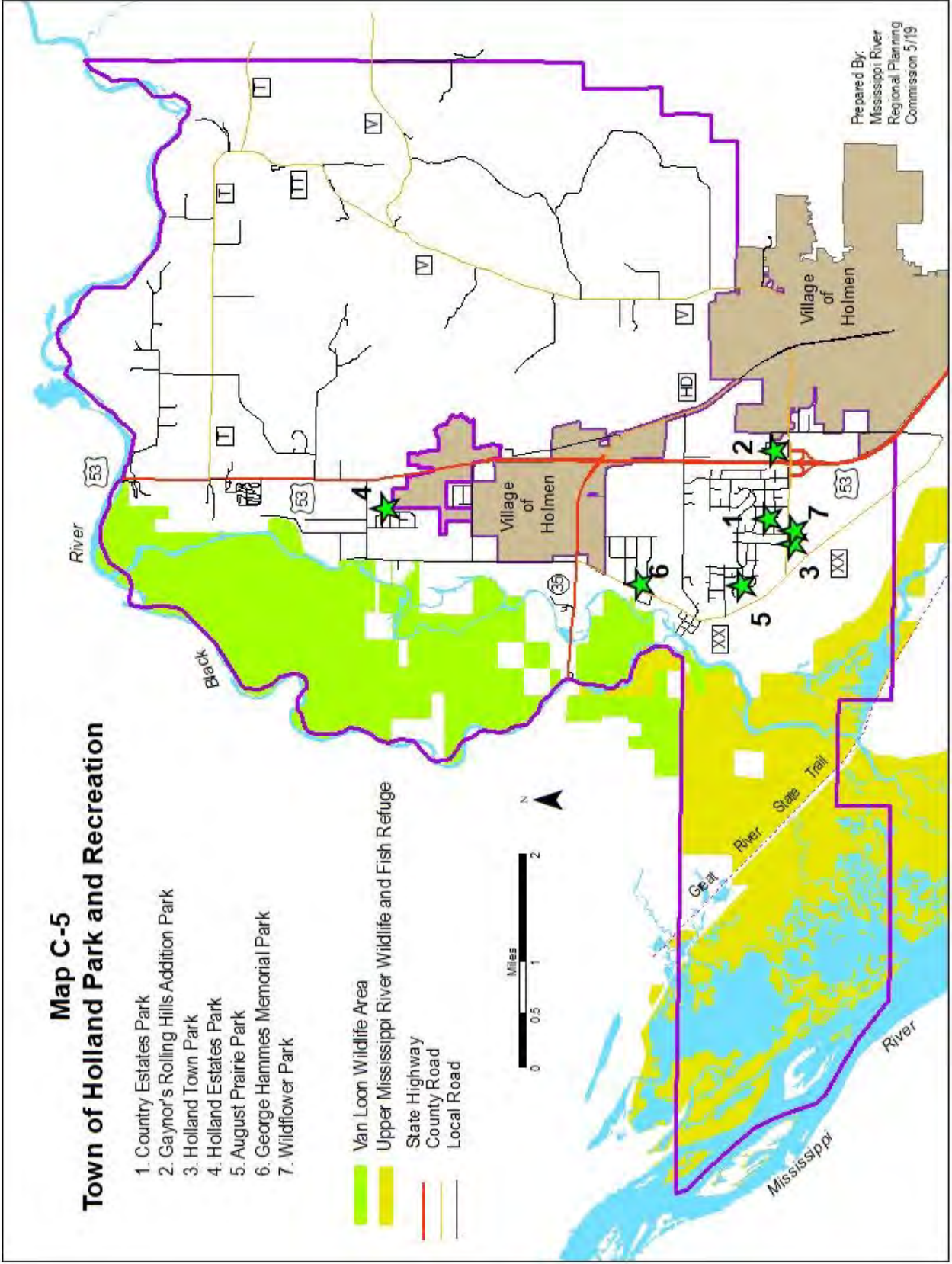
1. Wayside Park County DOT Rest Area
2. Bishop's View County DOT Rest Area
3. Town Park

- - - Class I Trout Stream
- - - Class II Trout Stream

Map C-5 Town of Holland Park and Recreation

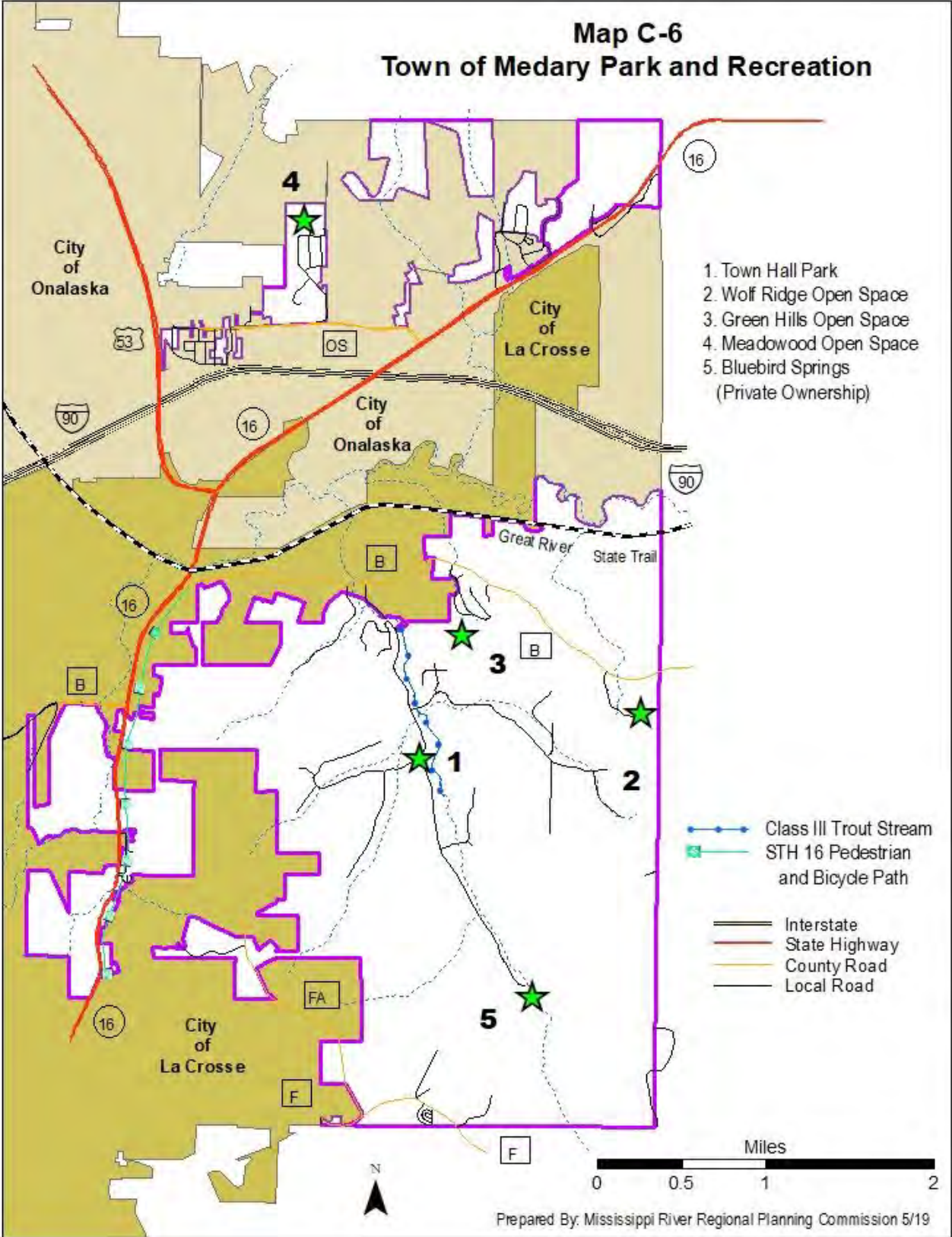
1. Country Estates Park
2. Gaynor's Rolling Hills Addition Park
3. Holland Town Park
4. Holland Estates Park
5. August Prairie Park
6. George Hammes Memorial Park
7. Wildflower Park

-  Van Loon Wildlife Area
-  Upper Mississippi River Wildlife and Fish Refuge
-  State Highway
-  County Road
-  Local Road



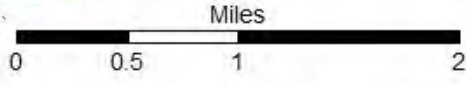
Prepared By:
Mississippi River
Regional Planning
Commission 5/19

Map C-6 Town of Medary Park and Recreation



- 1. Town Hall Park
- 2. Wolf Ridge Open Space
- 3. Green Hills Open Space
- 4. Meadowood Open Space
- 5. Bluebird Springs
(Private Ownership)

- Class III Trout Stream
- STH 16 Pedestrian and Bicycle Path
- Interstate
- State Highway
- County Road
- Local Road

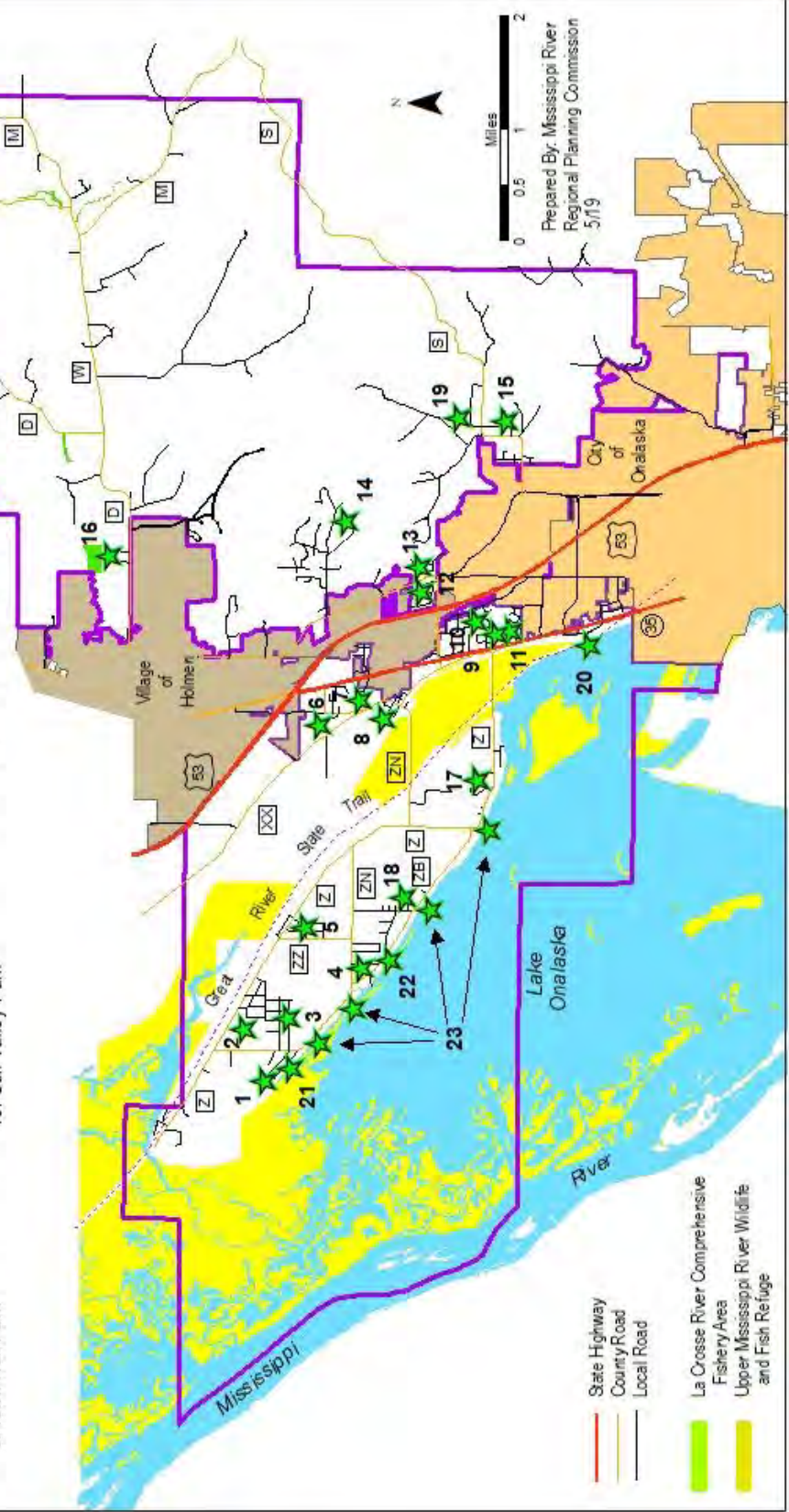


Map C-7 Town of Onalaska Park and Recreation

- 1. Homestead Park
- 2. First Prairie Park
- 3. Roth Field Park
- 4. Swarthout Park
- 5. Mulder Field Park
- 6. Prairie Heights Park
- 7. Meadow Estates Park
- 8. Town Hall Park

- 9. Terrace Heights Park
- 10. Strawberry Commons Park
- 11. Heritage Hills Park
- 12. Sandy Knolls Park
- 13. Thunderbird Hills Park
- 14. Apple Valley Park
- 15. Sobkowiak Park
- 16. Sun Valley Park

- 17. Mesa Grande Park
- 18. Schaller Lake Park
- 19. Marvin Gardens Park
- 20. Fisherman's Walk Down
- 21. Homestead Landing
- 22. Upper Brice Prairie Landing
- 23. Brice Prairie Shoreline & Dike

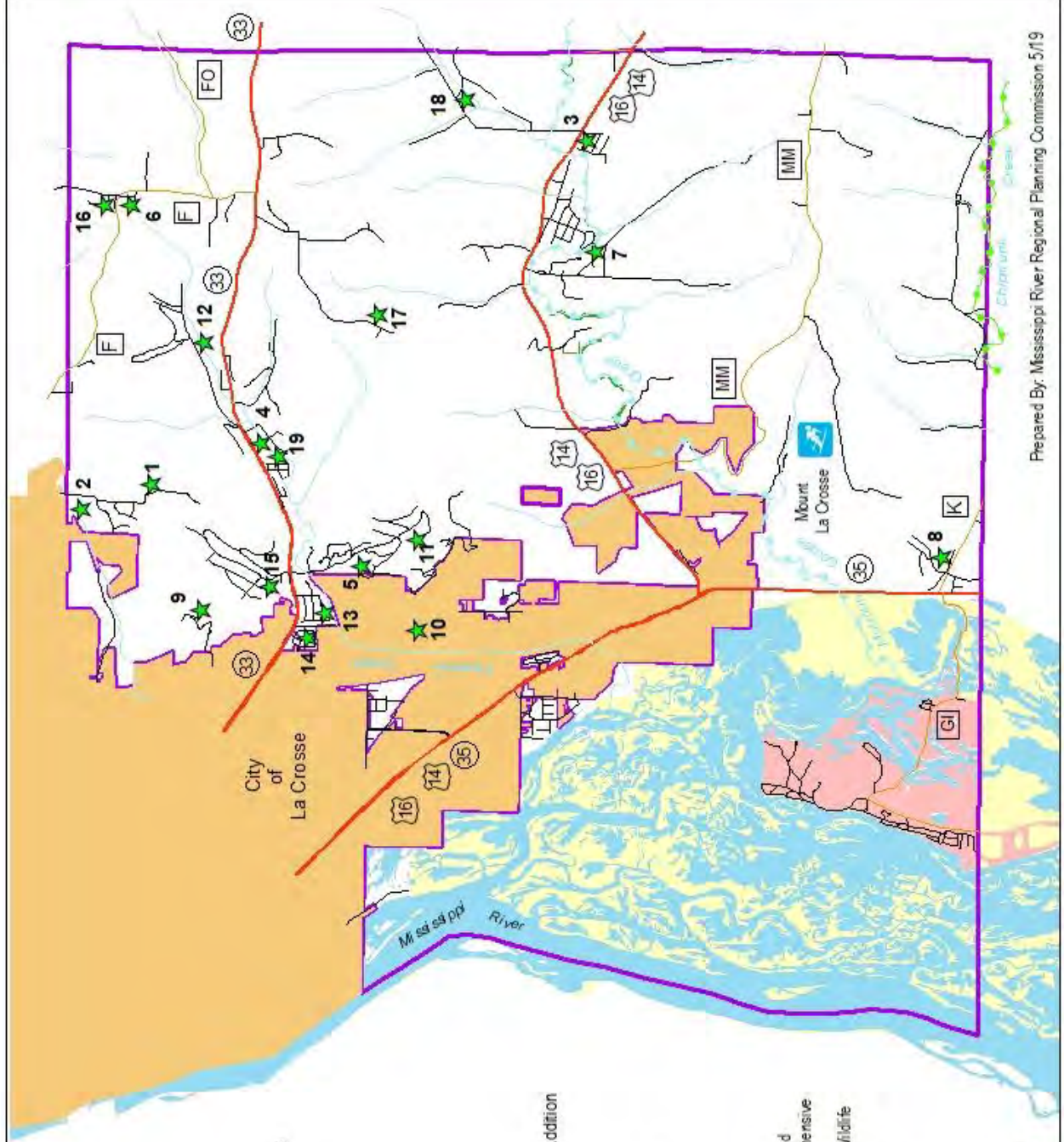
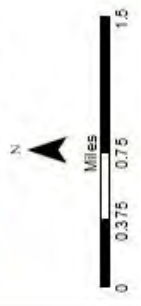


Prepared By: Mississippi River
Regional Planning Commission
5/79

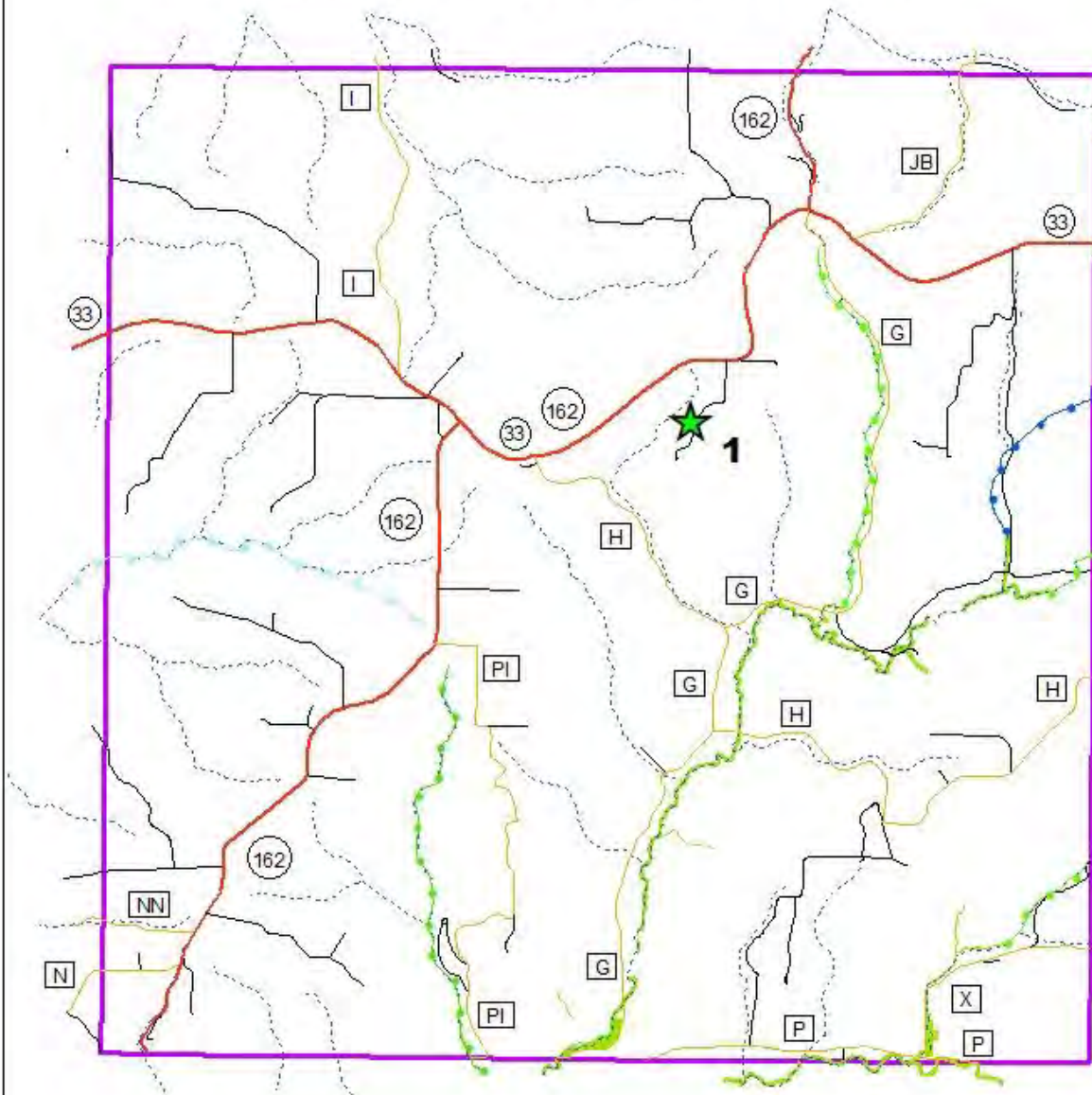
Map C-8 Town of Shelby Park and Recreation

- 1. Arbor Hills - Developed
- 2. Arbor Hills - Wooded Hillside
- 3. Brookwood
- 4. Pammel Creek Park
- 5. Forest Hills
- 6. Hills of Home
- 7. Morn on Coulee
- 8. River Hills
- 9. Scenic Addition
- 10. Shelby Field
- 11. Skyline
- 12. Smyth
- 13. Wedgewood Terrace
- 14. Wedgewood Terrace First Addition
- 15. Wedgewood Valley
- 16. Nolop Addition
- 17. Boulder Ridge Park
- 18. Unnamed
- 19. Pammel Creek Walkway

- US/State Highway
- County Road
- Local Road
- Goose Island Campground
- La Crosse River Comprehensive Fishery Area
- Upper Mississippi River Wildlife and Fish Refuge
- Class I Trout Stream
- Class II Trout Stream



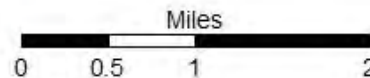
Map C-9 Town of Washington Park and Recreation



1. Ridge History Park

- Coon Creek Fishery Area
- Class I Trout Stream
- Class II Trout Stream
- Class III Trout Stream

- State Highway
- County Road
- Local Road

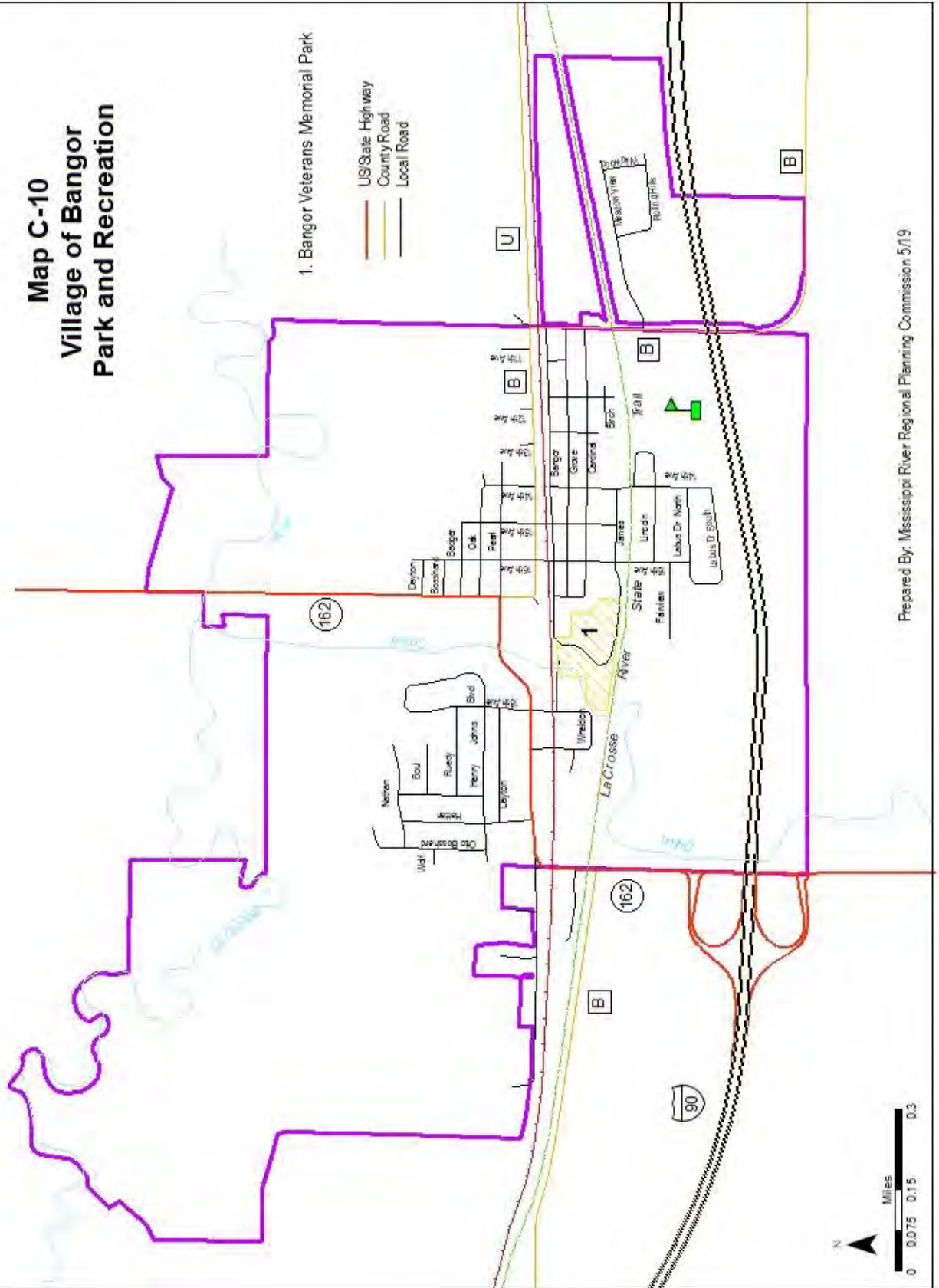


Prepared By: Mississippi River Regional Planning Commission 5/19

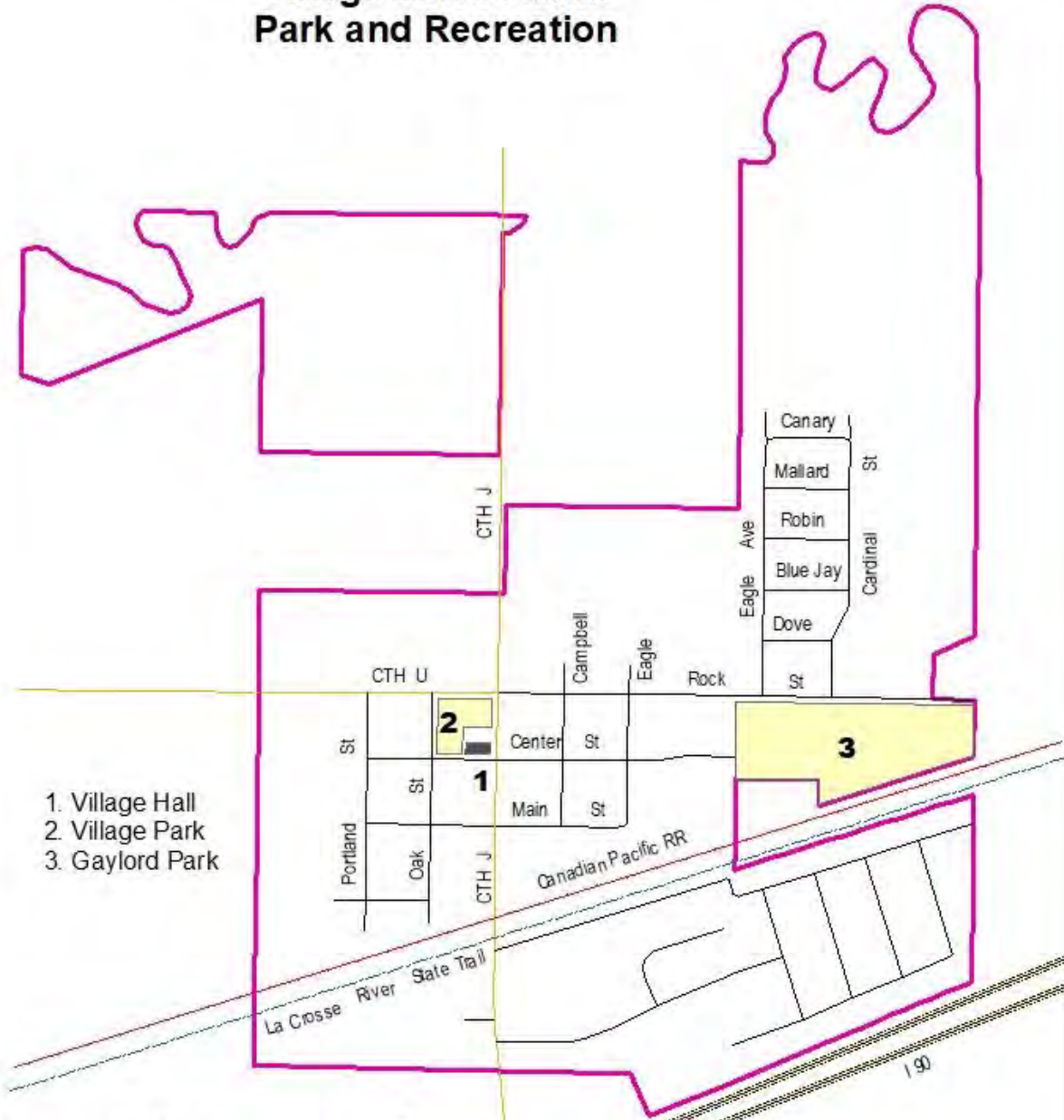
Map C-10 Village of Bangor Park and Recreation

1. Bangor Veterans Memorial Park

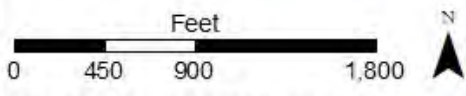
- US/State Highway
- County Road
- Local Road



Map D-11 Village of Rockland Park and Recreation



- 1. Village Hall
- 2. Village Park
- 3. Gaylord Park



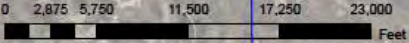
Prepared By: Mississippi River Regional
Planning Commission 5/19

- Interstate
- County Road
- Local Road

Appendix D

-Map of the Bluffland Coalition
Proposed Regional Bluffland Trail

Blufflands Plan Regional Bluffland Trail



LEGEND

- - - Regional_Bluffland_Trail
- Access_Point
- MunicipalityLimits
- LAXVEC.dbo.FEDSTROADS

