

SIX-MONTH IMPLEMENTATION UPDATE:

Pathways Home.

*An integrated and compassionate approach
addressing homelessness in La Crosse*



*La Crosse County Board of Supervisors &
Invited City of La Crosse Council Members*

July 8th, 2024



LA CROSSE COUNTY

PLAN
DEVELOPMENT
(JUN 2024 - DEC 2024)

PARTICIPANTS
(Planning Teams)

Catholic Charities
City of La Crosse Fire Dept
Couleecap
Coulee Tenants United
Family & Children's Center
First Free Church
Great Rivers 211
Independent Living Resources
Karuna
La Crosse County Health Dept

La Crosse County Veterans
Services
La Crosse County Zoning,
Planning & Information
Landlord
Legal Action
Lived Experience Individuals
Lutheran Social Services
Next Chapter
New Beginnings Christian
Fellowship

RHYMES
Salvation Army
School District of La Crosse
State of Wisconsin Balance of
State Continuum of Care
Viterbo University
Vivent Health
YMCA
YWCA



The Future State of Homelessness Response

Aligned

CRISIS RESPONSE

- La Crosse Services are housing focused
- There are safe and appropriate housing or shelter options to offer immediately
- Crises are rare and met with an effective response

Accountable

OUTFLOW

- There will be specialized housing capacity and supports to help everyone get into housing
- There will be housing options that meets everyone's needs
- La Crosse has a multitude of supportive services to help people thrive
- La Crosse has caring connections to offer everyone support in housing

Effective

PREVENTION

- People have supports to maintain housing
- Resources are easy to navigate and empower people
- Everyone has sustainable, safe, affordable, and accessible housing

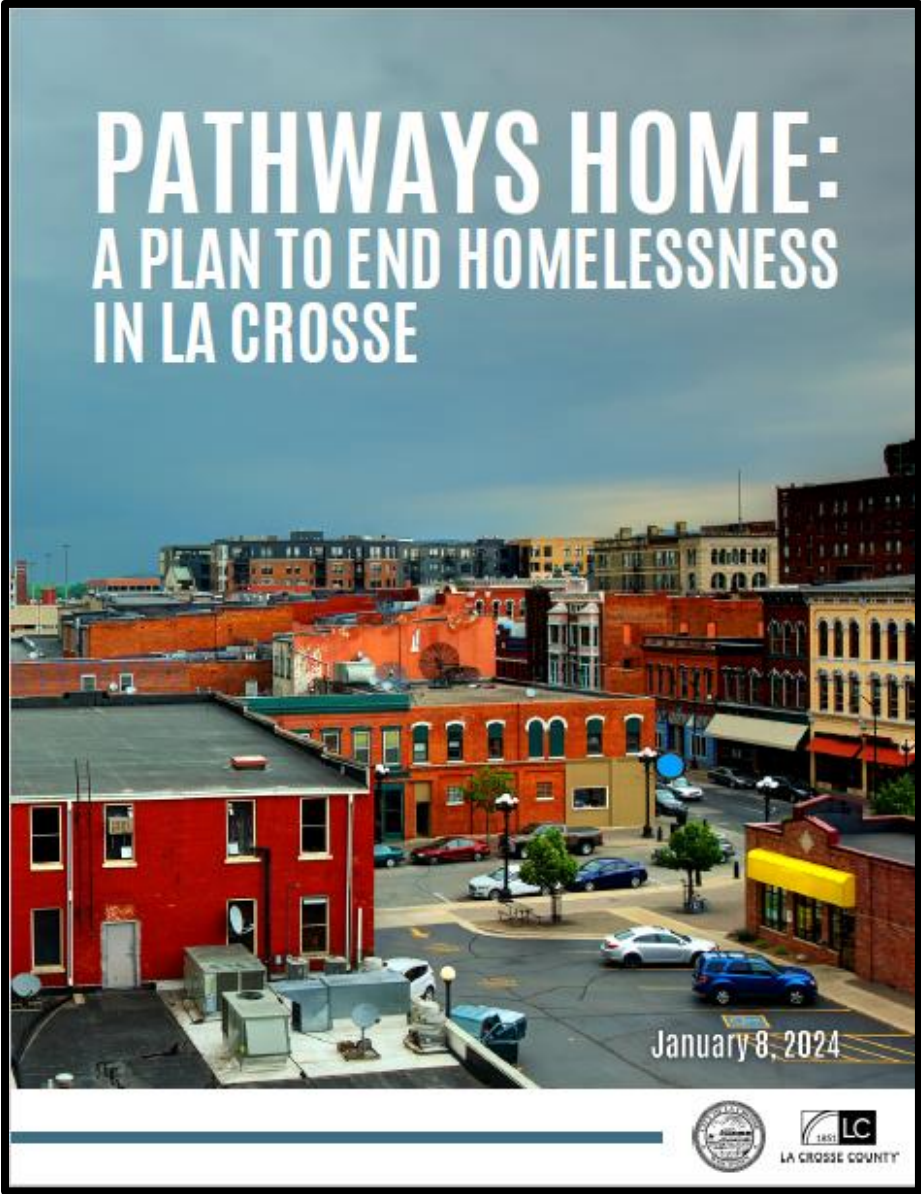


LA CROSSE COUNTY

A New & Different Path

for the

La Crosse Community





Pathways Home as a New Approach:

- City & County Led

- Transparent

- Accountable to the Community

It is not

- A short-term emergency plan
- More resources to do the same thing
- Waiting to act

It is

- Strategic
- Designed to reach homelessness functional zero (with no one unsheltered)
- Sustainable
- Action now & Helping people now



Building the System



Housing and Wraparound Supports for Everyone who Needs Them

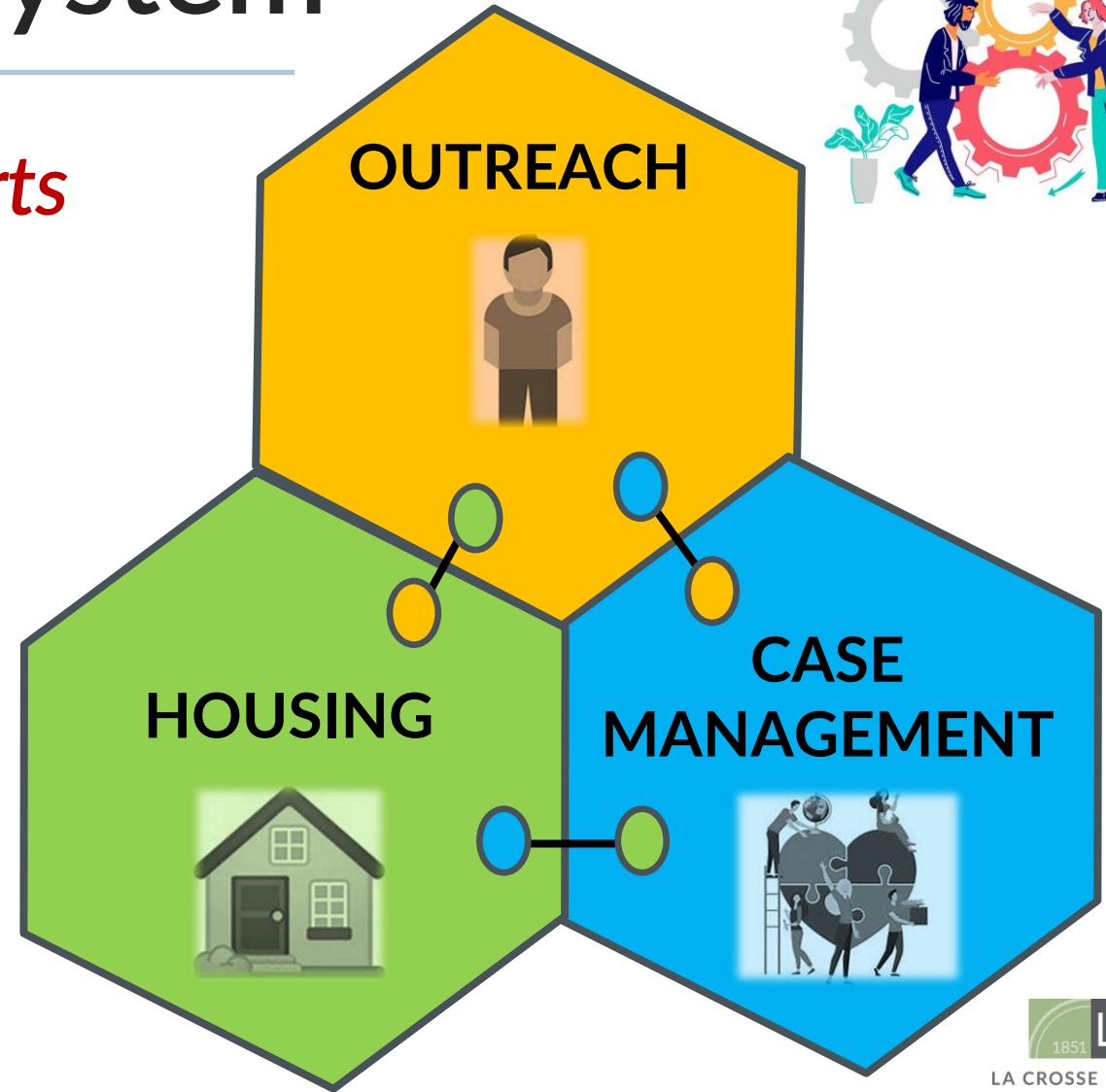
- Highly Coordinated

- > Services > Policies
- > Funding > Practices

- Comprehensive

- Data-Driven

With camping no longer available as a living option



Putting the Plan to *Action*

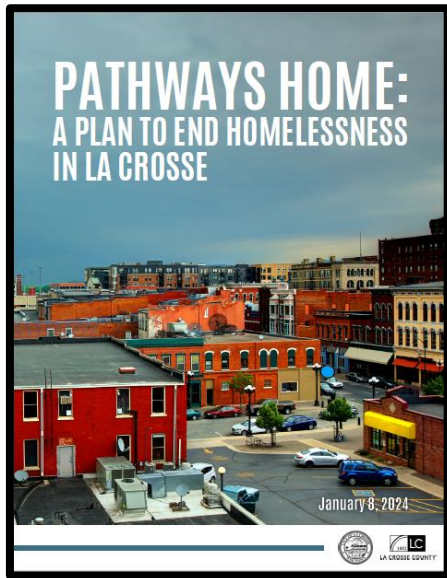

The Plan

includes

Eight Strategies

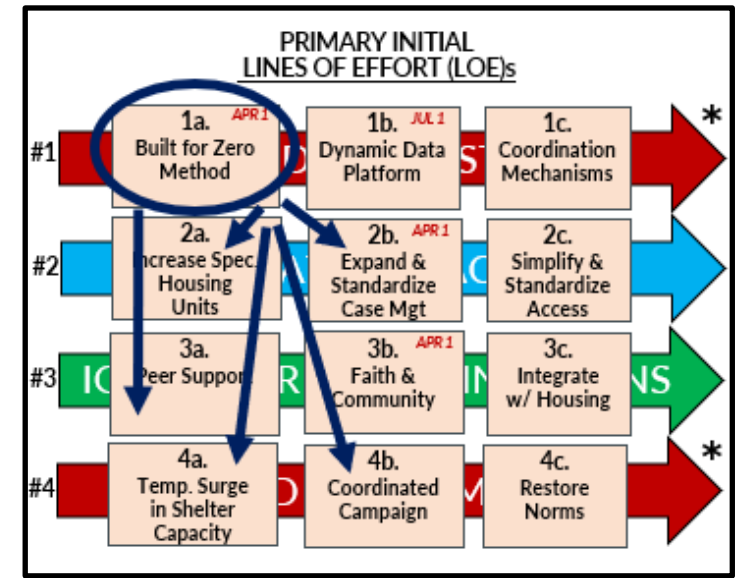
prioritized w/
timeframes into

Twelve Objectives

The "Great Eight" Action Pathways

1. Build the System
2. Close the Housing Gap
3. Provide Necessary Case Mgt
4. Re-imagine Outreach
5. Infuse Caring Connections
6. Shore-up Prevention
7. Calibrate Justice Response
8. End the Encampments



Discussion Outline

- I. Deliverables & Activities (what we said we were going to do)
- II. Status (what we did)
- III. Upcoming Activities (what's next)
- IV. Topline Summary



*Pathways
Home*

Deliverables & Activities





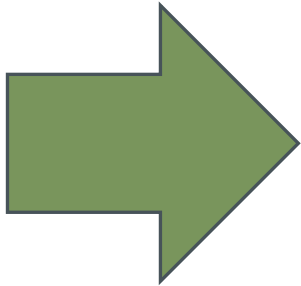
Deliverables (January 2024 – June 2024)

- 1. Coordinated Housing Connection Process
(Built for Zero Methodology)
> By-Name List > Case Conferencing
- 2. Specialized Behavioral Health Unit
- 3. Faith Community Outreach Plan
- 4. Dynamic Data Dashboard

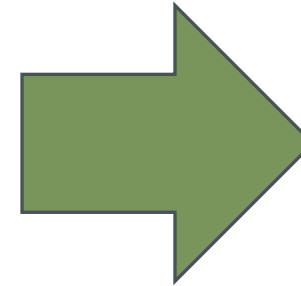


Activities (January 2024 – June 2024)

2024



QTR #1 (Jan – Mar)	QTR #2 (Apr – Jun)
Infrastructure Development <ul style="list-style-type: none"> A. Confidentiality Compliance B. IT Infrastructure C. Processes & Procedures D. Leadership Onboarding 	Outreach & Data Gathering <ul style="list-style-type: none"> A. Populate & Prioritize By- Name List B. Data Gathering C. Communications <p><i>Specialized Behavioral Health Unit Pathways to Housing List Dynamic Data Dashboard Pathways Case Conferencing</i></p>



Operational Leadership

Jim Drees

(La Crosse County)

PROJECT LEADER



Brian Sampson

(City of La Crosse)

OUTREACH



Jenna Helminski Juve

(La Crosse County)

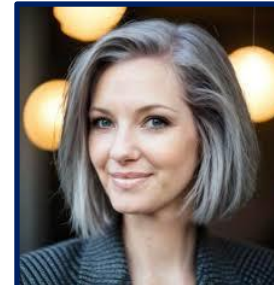
CASE MANAGMENT



Quinn Devlin

(La Crosse County)

HOUSING ACCESS



Isaac Hoffman

(La Crosse County)

PREVENTION





*Pathways
Home*

Status

SIX-MONTH UPDATE





Deliverable #1: Coordinated Housing Connection Process

a. BY-NAME LIST

- **Operational:** Referred to as “Pathways to Housing List”
- **Prioritized:** 30 individuals from the list have been prioritized for coordinated housing efforts

b. CASE CONFERENCING

- **Operational:** Referred to as “Pathways Conferencing”
- **Participation:** Approximately 19 Agencies Participating in Case Conferencing

c. REAL-TIME DATA

- **Utilization:** We now have access to real-time data from the Pathways to Housing List which is driving both operations and strategy



Alongside Fantastic Community Partners



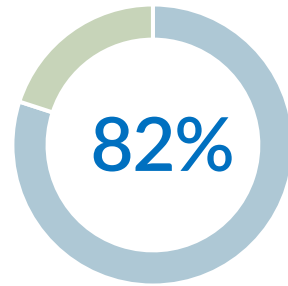
Pathways Conferencing Meeting



Data from Pathways to Housing List

of Individuals **Unsheltered**: 120*

Last Jurisdiction of
Residence La Crosse:



1 of 3

Previously Housed:



*Based on verified unsheltered (61) & estimate of individuals w/
unknown locations

Importance & Use

*Data will inform capacity needs for
downline objectives, such as:*

- > surge shelter*
- > ongoing shelter*
- > and specialized housing*



Deliverable #2: Specialized Behavioral Health Unit

a. STAFFING

- **Positions Filled:** All three (3) positions in the unit have been filled with seasoned social workers

b. ACTIVITIES

- **Operational:** The positions are being deployed immediately to supplement outreach efforts, while cases are opened over time (focus is on housing plans for all unsheltered)

c. ALIGNMENT

- **Operational:** The specialized unit is also working to streamline access to other Human Services, such as Economic Support and Aging & Disability services



Human Services Staff Engaged in Outreach Activities

A. Specialized Unit Staff

- Sarah Harrison
- Kate Holinka
- Joe Welin

B. Other Human Services Staff

- Nathan Christensen (Economic Support Services)
- Shelby Vinson (Economic Support Services)
- Neva Sallee (Justice Support Services)

A More Coordinated System Already Making a Difference!

Client experience

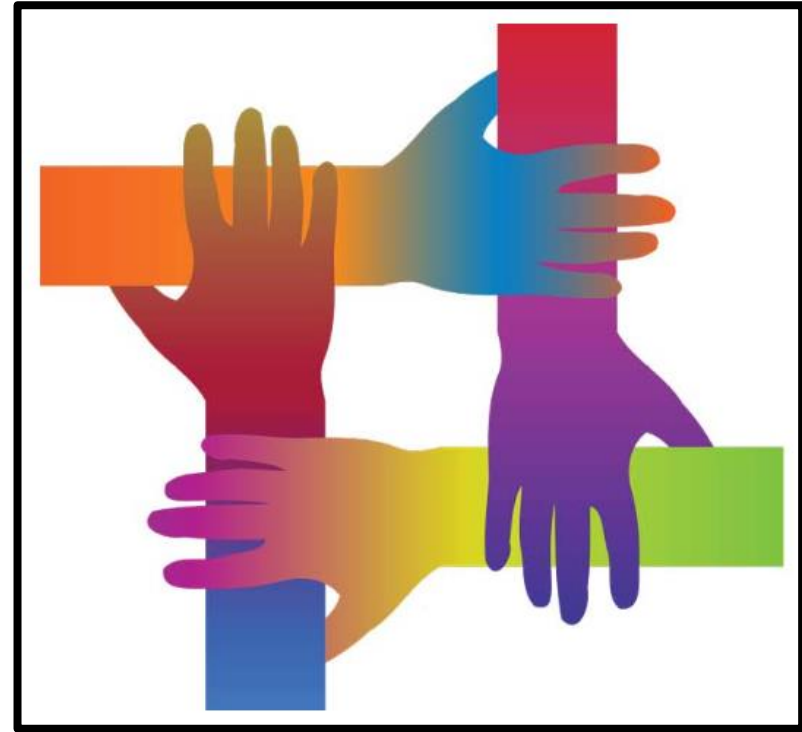
(The Potential of System Integration)

- Gundersen Mobile Health Team
- My Choice Wisconsin
Family Care Managed Care Organization (MCO)
- State of Wisconsin Dept. of Corrections
Probation & Parole

Evolution of Outreach Activities:

Molly McCormick
City of La Crosse Fire Dept.
Community Risk Educator

From focusing on keeping people alive to having the coordination and capacity to effectively make housing connections





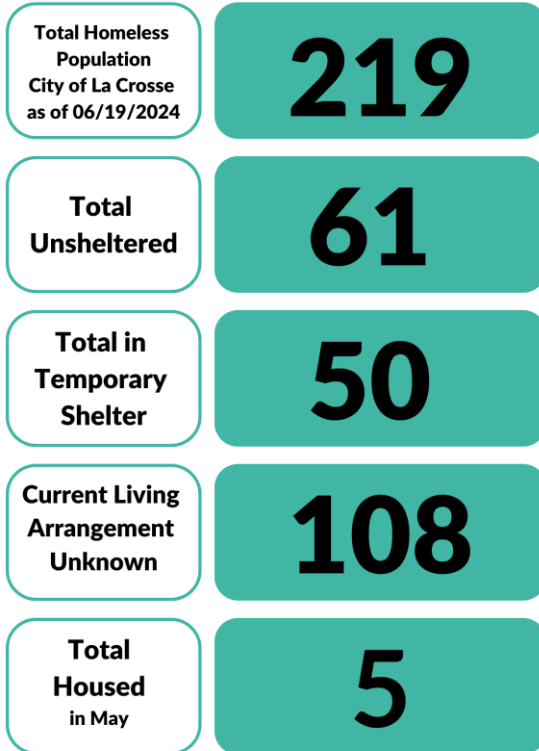
Deliverable #3: Faith Community Outreach

- Plan completed by workstream leaders includes:
 - **Invitation** for the Faith Community to be part of our work
 - Ongoing communication & **partnership building**
(including breakfast & lunch discussions this week)
 - **Coordination** of current resources and **inspiration** of new **Efforts** (based on local & non-local examples)
- First connection: “Neighbor-to-Neighbor”

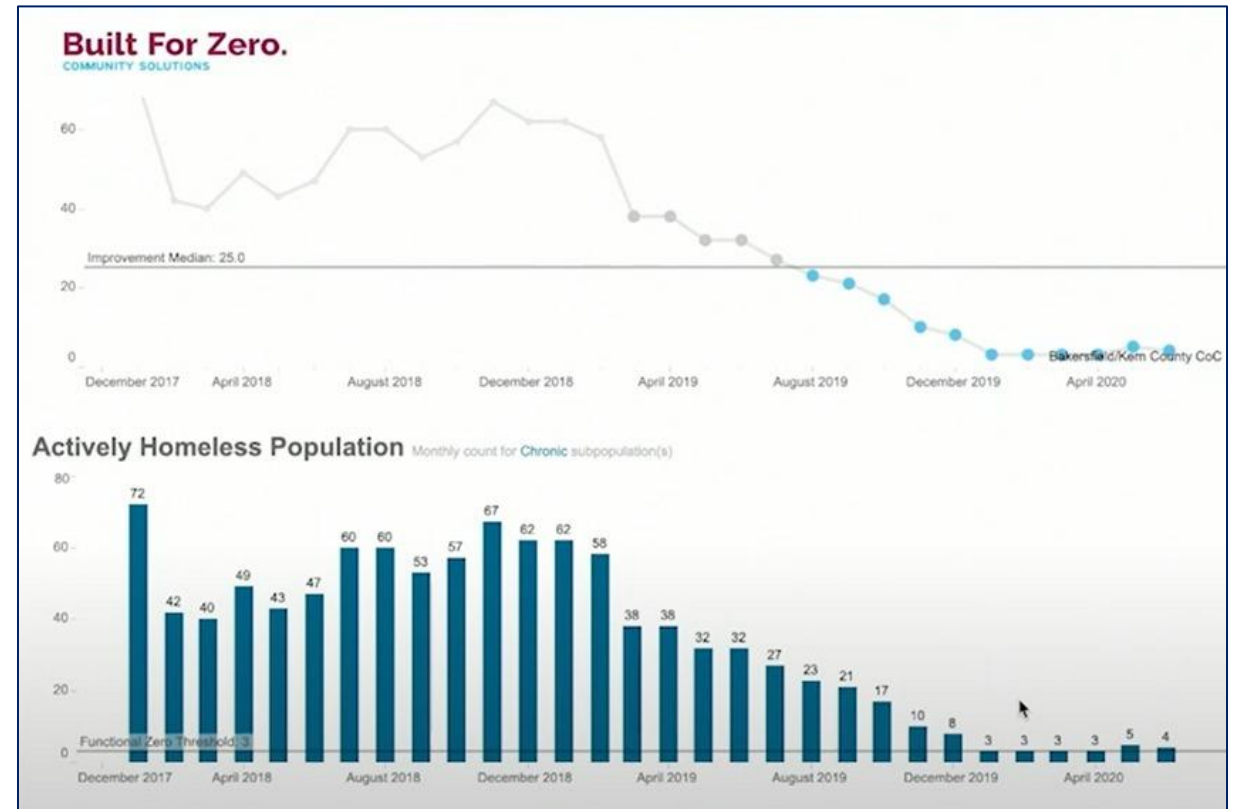


Deliverable #4: Dynamic Data Dashboard

Live Now @
lacrossecounty.org/pathwayshome



More to Come!





*Pathways
Home*

Upcoming Objectives

JULY - DECEMBER

- *Creation of Service Pathways*
- *Peer Support Plan*
- *Housing Initiative*



LA CROSSE COUNTY



Increasing Housing Capacity

Mara Keyes
City of La Crosse
Community Development Mgr

- **Housing Initiative** to be Launched Later in the Year
- Will address **sustainable housing** solutions and needs related to long-term and temporary “surge” **shelter** capacity
- Goal is to **Align** City of La Crosse ARPA and Other Community **Funding** to Pathways Home
- As a first step, the City of La Crosse has released a **Request for Interest (RFI)** for sustainable housing solutions



Request *for* Interest



City of La Crosse

Request for Interest

Pathways Home Housing Solutions

Pathways Home

Topline Summary





Deliverables (January 2024 – June 2024)

- 1. Coordinated Housing Connection Process
(Built for Zero Methodology)
> By-Name List > Case Conferencing
- 2. Specialized Behavioral Health Unit
- 3. Faith Community Outreach Plan
- 4. Dynamic Data Dashboard



Pathways
Home

At Six Months:

- > On Path
- > On Target
- > Important Work Ahead



We can do this!



LA CROSSE COUNTY