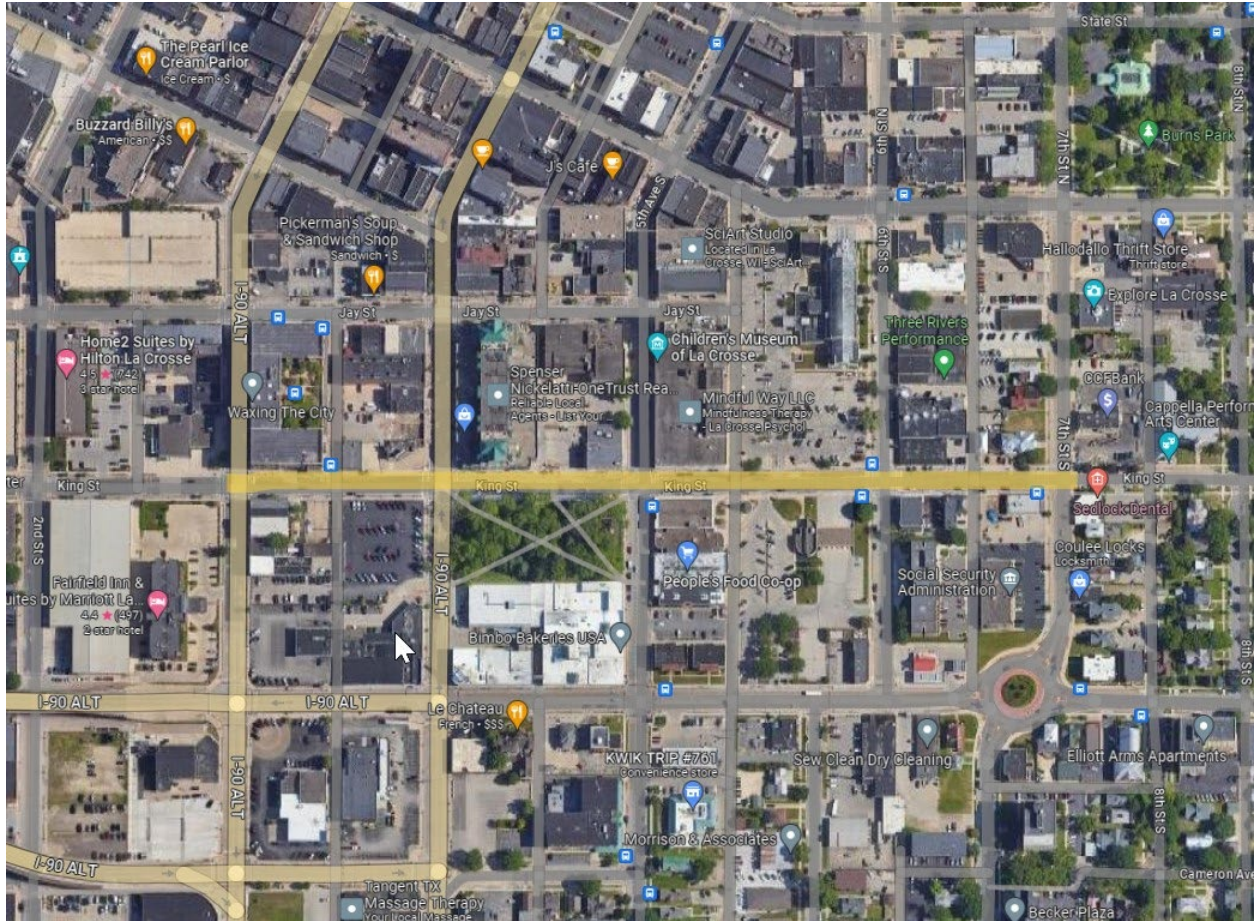
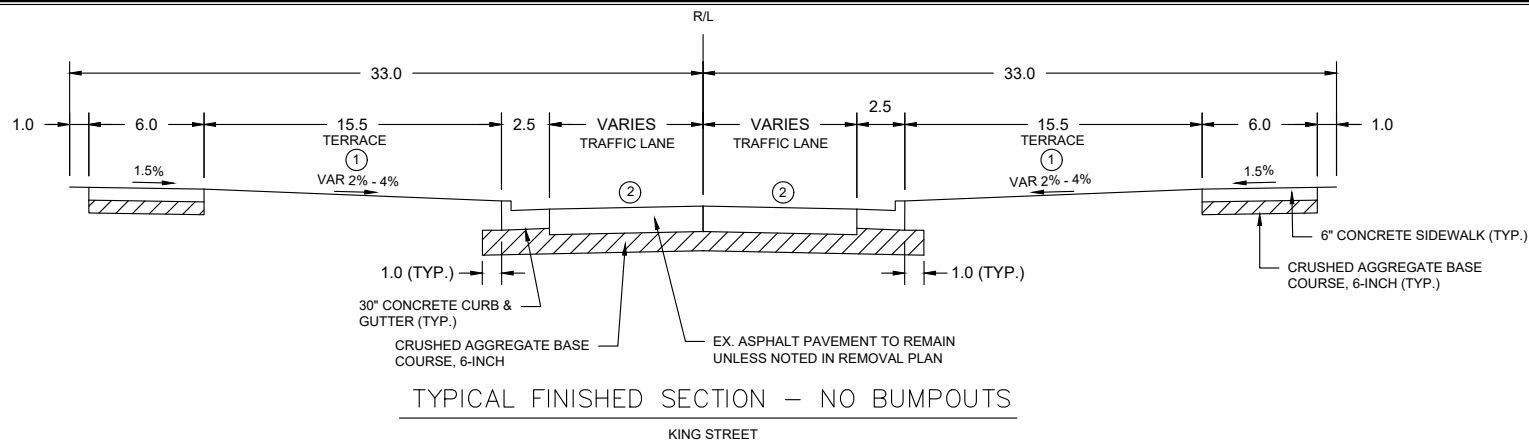


King Street Greenway Project Map

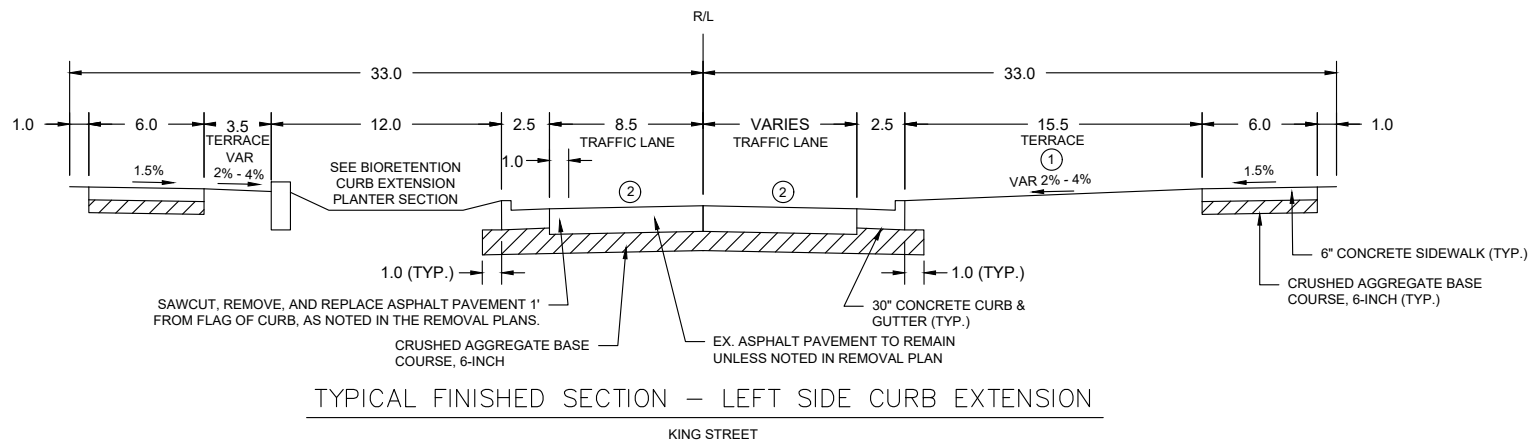


Save: 7/6/2023 12:33 PM noswald Plot: 7/11/2023 11:45 AM X:\KOLLACRS\169052\5-final-dsgn\51-drawings\10-Civil\cad\dwg\sheet\LACRS169052TY.dwg



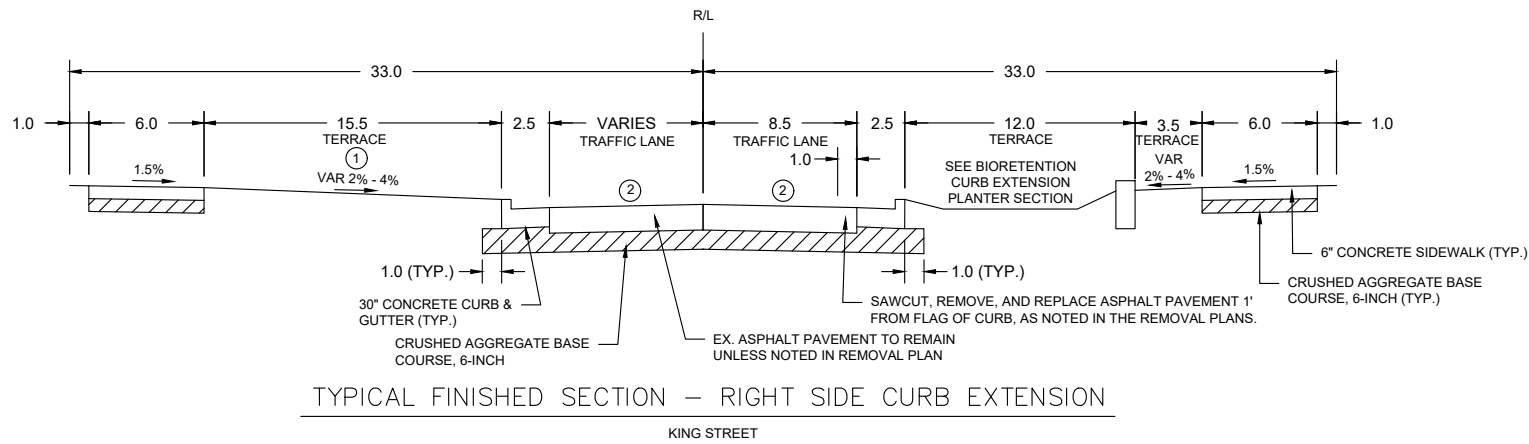
TYPICAL FINISHED SECTION - NO BUMPOUTS

KING STREET



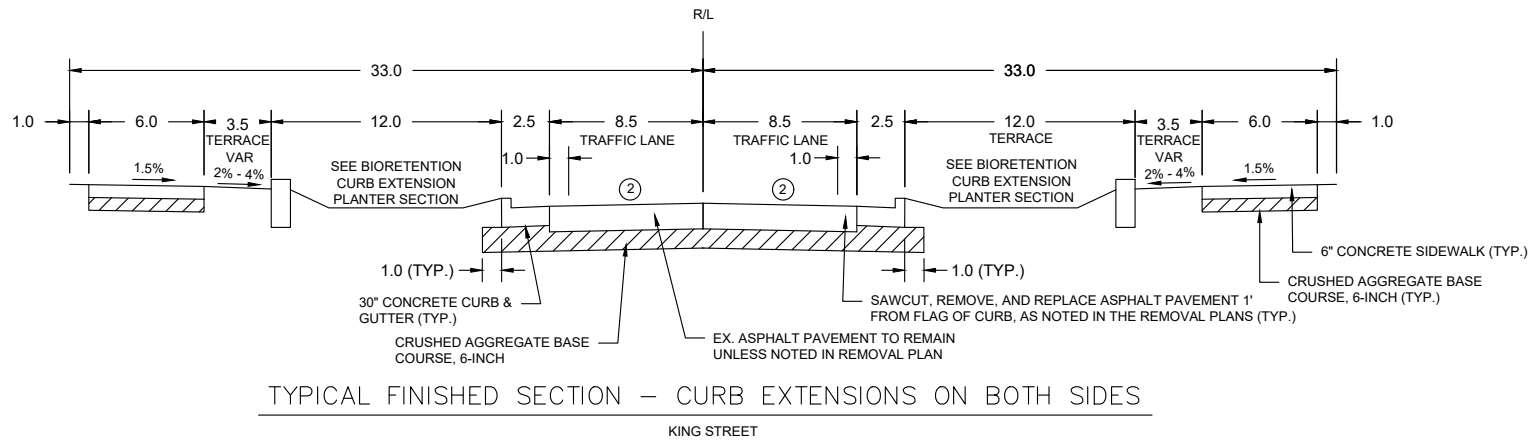
TYPICAL FINISHED SECTION - LEFT SIDE CURB EXTENSION

KING STREET



TYPICAL FINISHED SECTION - RIGHT SIDE CURB EXTENSION

KING STREET



TYPICAL FINISHED SECTION - CURB EXTENSIONS ON BOTH SIDES

KING STREET

- NOTES:
- ① REFER TO LANDSCAPE PLAN FOR MEDIAN AND TERRACE TREATMENTS.
 - ② PAVEMENT CROSS SLOPE VARIES THRU INTERSECTION. REFER TO INTERSECTION DETAILS.

SEH Project	169052	Rev.#	Revision Issue Description	Date	Rev.#	Revision Issue Description	Date
Drawn By	NGO
Designed By	NGO
Checked By	--



KING STREET GREENWAY
LA CROSSE, WISCONSIN

KING STREET - TYPICAL SECTIONS

C1.31



October 28, 2025

Wisconsin Department of Transportation
Transportation Alternatives Program (TAP)
4822 Madison Yards Way
Madison, WI 53705

RE: Letter of Support for the King Street Greenway Extension Project

Dear Wisconsin Department of Transportation TAP Committee Members,

On behalf of **Downtown Mainstreet, Inc.** I am writing to express our strong support for the **City of La Crosse's application for the Transportation Alternatives Program (TAP) Grant** to fund the completion of the **King Street Greenway Extension**. This transformative project will enhance the safety, connectivity, and livability of downtown La Crosse and the surrounding neighborhoods by expanding multimodal access for all users.

The King Street Greenway extension will complete a vital link from Front Street to 7th Street, connecting existing greenway segments from 7th to 22nd Street. Once finished, the greenway will create a continuous, accessible corridor that supports safe and efficient bicycle and pedestrian travel between key destinations such as **Riverside Park, Cameron Park, downtown La Crosse, and the University of Wisconsin–La Crosse**. This investment not only strengthens the city's active transportation network but also promotes environmental sustainability, equitable mobility, and community health.

We are particularly supportive of this project because it:

- **Improves safety** for bicyclists and pedestrians through traffic-calming designs, refuge islands, and bioretention features.
- **Enhances connectivity** between neighborhoods, parks, schools, and major employment centers, reducing reliance on motor vehicles.
- **Advances environmental and public health goals** by promoting active transportation and incorporating green infrastructure.

The **King Street Greenway Extension** is an important step toward realizing La Crosse's long-term vision for a connected, safe, and sustainable active transportation network. **Downtown Mainstreet, Inc.** is proud to support this effort and looks forward to its positive impact on our community.

Thank you for your consideration of this worthy project. Please do not hesitate to contact me if you have any questions or require additional information.

Sincerely,

Chad Honeycutt

Chad Honeycutt
Executive Director
Downtown Mainstreet, Inc.
319 Main Street Suite 510
chad@lacrossedowntown.com

October 28, 2025

RE: Letter of Support for the King Street Greenway Extension – Transportation Alternatives Program Application

Dear Transportation Alternatives Program Review Committee,

As a member of the La Crosse Common Council representing District 6, I am writing to express my strong support for the City of La Crosse's application to the Transportation Alternatives Program (TAP) for the King Street Greenway Extension Project.

The King Street Greenway is a transformative investment in safe, multimodal transportation within our city. Its planned extension will complete a critical east–west connection linking the Mississippi Riverfront, downtown, and the University of Wisconsin–La Crosse area. This project will provide a comfortable, continuous corridor for pedestrians and bicyclists of all ages and abilities—creating a truly connected community.

The Greenway directly supports the goals of TAP by:

- Enhancing safety for non-motorized users through protected infrastructure and clear wayfinding;
- Improving accessibility and connectivity between neighborhoods, parks, schools, and key employment and cultural centers;
- Encouraging active transportation that reduces vehicle trips and greenhouse gas emissions, consistent with La Crosse's Climate Action Plan; and
- Promoting equitable mobility by providing affordable, safe travel options for residents without access to a car.

The City of La Crosse has consistently invested in projects that strengthen sustainable transportation choices and downtown livability, including the initial phases of the King Street Greenway. This extension represents the final link in a long-term vision to connect people and places safely, efficiently, and beautifully.

On behalf of myself and the residents I serve, I respectfully urge your full consideration of this important project. The King Street Greenway Extension exemplifies the purpose and spirit of the Transportation Alternatives Program—building healthier, safer, and more connected communities across Wisconsin.

Thank you for your dedication to supporting local infrastructure that makes a real difference in people's lives.

Sincerely,

Chris Kahlow

La Crosse Common Council Member, representing District 6

Email: kahlowc@cityoflacrosse.org

Phone: (608) 448-5114



LA CROSSE COUNTY
Exceptional services. Extraordinary place.

County Administrator, Jane Klekamp
212 6th Street North - Room 2400
La Crosse, WI 54601
608-785-9635 Phone
jklekamp@lacrossecounty.org Email
lacrossecounty.org

October 28, 2025

Wisconsin Department of Transportation
Transportation Alternatives Program Grant Review Committee

Re: Letter of Support – King Street Greenway Extension, City of La Crosse

Dear Review Committee,

On behalf of La Crosse County, I am pleased to express our support for the City of La Crosse's King Street Greenway extension project. This project represents an important investment in safe and sustainable transportation infrastructure, connecting residents of all ages to downtown, parks, schools, local businesses, and public transit.

The King Street Greenway extension builds on years of careful planning and community engagement and will complete a vital segment of the city's growing multi-modal network. The project aligns with both City and County goals to promote active transportation, public health, environmental stewardship, and economic growth.

La Crosse County recognizes the project's potential to reduce traffic risks, encourage physical activity, and support economic development, while connecting community amenities and public housing sites to safe walking and bicycling routes. The County strongly supports the City's efforts to secure Transportation Alternatives Program funding to implement this project efficiently and successfully.

We encourage the Wisconsin Department of Transportation to fully fund this important greenway extension, which will serve as a model of community-focused, multimodal planning for years to come.

Sincerely,

Jane Klekamp
La Crosse County Administrator