

Support Center

WAFER Food Pantry



Gillette St

GRA  
CROS

Logan High School



Liberty St

Charles St

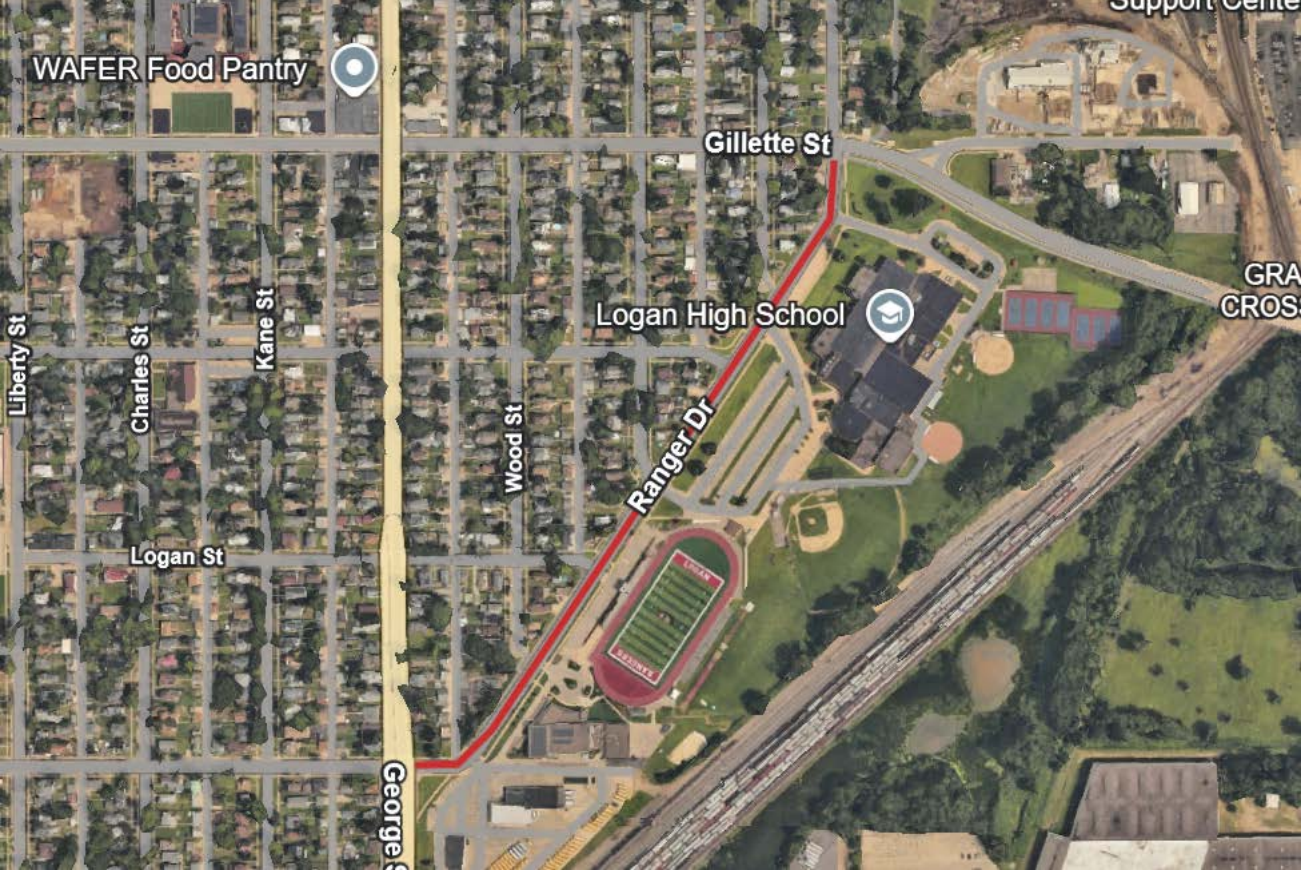
Kane St

Wood St

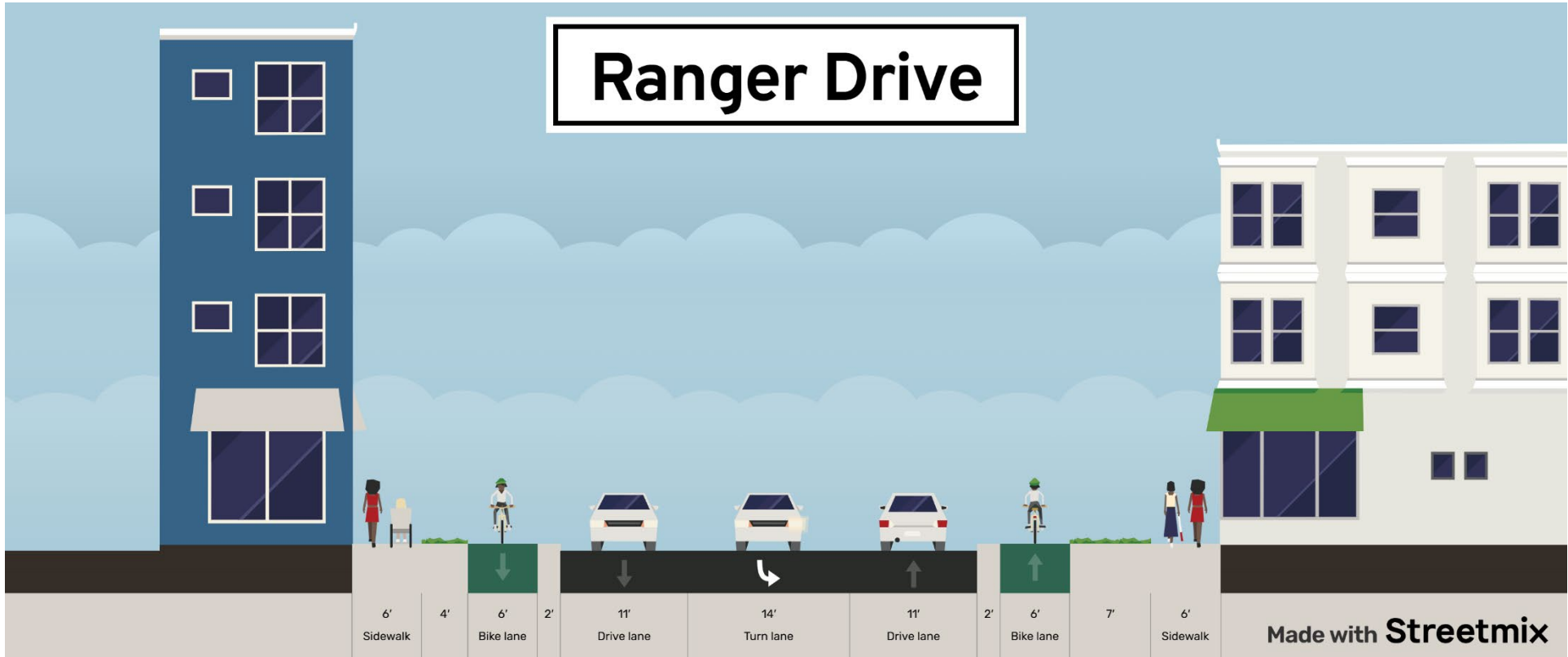
Ranger Dr

Logan St

George St



# Ranger Drive





**BOYS & GIRLS CLUBS**  
OF GREATER LA CROSSE

October 29, 2025

To Whom It May Concern:

On behalf of the Boys and Girls Clubs of Greater La Crosse, I am writing in support of adding safe and accessible transportation alternatives to Ranger Drive.

Each day, many young people rely on biking or walking to reach our Clubs after school. As an organization dedicated to supporting youth, we see the importance of safe routes for our members. Rectangular flashing beacons, protected bike lanes, and filling sidewalk gaps would have an immediate and lasting impact on the safety of kids traveling to and from our Club. Additionally, outside of safety, we see these additions as an encouragement to develop healthy habits for youth.

We support initiatives that improve safe routes to school and afterschool programs like our Club. Together, we can help ensure each child has a safe path to a safe place to go after school. Thanks for your consideration.

Sincerely,

A handwritten signature in black ink that reads "Joan K. Parke". The signature is fluid and cursive, with the first name "Joan" being the most prominent.

Joan K. Parke

Chief Operations Officer

608-881-7790

joan.parke@bgclax.org

October 28, 2025

To whom it may concern,

Logan Northside Neighborhood Association is an active Neighborhood group that would be in support of improved safety for the Logan High School students and others who attend school on Ranger Drive. We have been working diligently to provide lighting and projects to enhance our neighborhood in its safety, accessibility and appearance. We support the improvements that this Transportation Alternative Program grant would provide.

We have been actively communicating with the neighbors in the Ranger Drive area. We know that younger students are often traveling from the Middle School and Elementary School. These students try crossing the intersection near the Boys and Girls Club and this area experiences fast moving traffic. The neighbors have requested ways to slow traffic on Ranger Drive and assist with pedestrian crossing by the Boys and Girls club. With the current speeds encountered, it is difficult for students and their parents to feel safe in using bikes or walking to get to the high school or Boys and Girls Club.

We understand that Ranger Drive will assist in the process by installing a protected bike lane, RRFBs near Sill and Wood Street and Ranger Drive. This would especially give students on the northside the opportunity to safely shift their mode of transportation to walking or biking and serves as a connection to many other safe multi-modal routes including Gillette St, the Bud Hendrickson Trail, Onalaska Avenue and Ranger Drive. There is a frequently used bus stop at the intersection of Gillette and Ranger Drive with Onalaska Avenue.

Providing the funding for this endeavor will promote use of several alternative modalities in the area near a high school, namely: walking, biking, and municipal transit.

Logan Northside Neighborhood Association Officers,

Ralph Geary - Co Chair,

Aaron Kerr - Co Chair,

Liz Reardon - Treasurer,

Tamra Dickinson - Secretary

October 27<sup>th</sup>, 2023

Sadie Kuhl

La Crosse, WI

**RE: Upgrades to Ranger Drive**

To Whom It May Concern,

I am writing in support of the *Upgrades to Ranger Drive* Transportation Alternatives Program grant application.

As a resident of La Crosse's Northside, a homeowner on Ranger Drive, a mother of two young children who ride their bikes, and a daily bike commuter, I am very aware of the safety challenges that currently exist on Ranger Drive. The street runs between residential homes on the west side and Logan High School and the Boys and Girls Club on the east side. It is unusually wide and lacks a strong tree canopy or other visual cues that would help slow down traffic. As a result, many drivers accelerate as they enter the street from either direction—despite passing a high school and a youth center.

Each day, students of all ages walk to and from Logan High School and the Boys and Girls Club. In addition, families and community members frequently park on nearby streets and cross Ranger Drive to attend various events. With a few key upgrades, this corridor could become a much safer and more welcoming space for everyone who uses it.

Installing Rectangular Rapid Flashing Beacons (RRFBs) at two key crossings on Ranger Drive will allow students, families, and community members to cross safely at any time of day, seven days a week. Ranger Drive also serves as the starting point of the Bud Hendrickson Trail, a critical commuter and recreational route connecting North La Crosse to Onalaska. The proposed upgrades—including a protected bike lane and a new sidewalk on the west side of the street up to Prospect Street—will make it easier and safer for people to walk, bike, and access community destinations. Currently, the absence of a sidewalk forces pedestrians to walk in yards or in the street, which creates unnecessary risk.

The proposed improvements to Ranger Drive represent an important step toward creating a safer, more connected, and more livable community. I strongly support this project and urge its approval.

Thank you for your consideration.

Sincerely,

Sadie Kuhl

1402 Wood Street

La Crosse, WI